

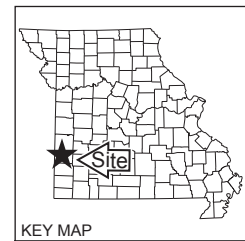
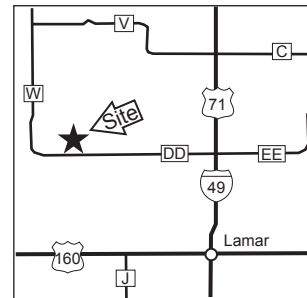
MO-NO-I PRAIRIE CONSERVATION AREA

BARTON COUNTY
302 ACRES

SCALE



VICINITY MAP

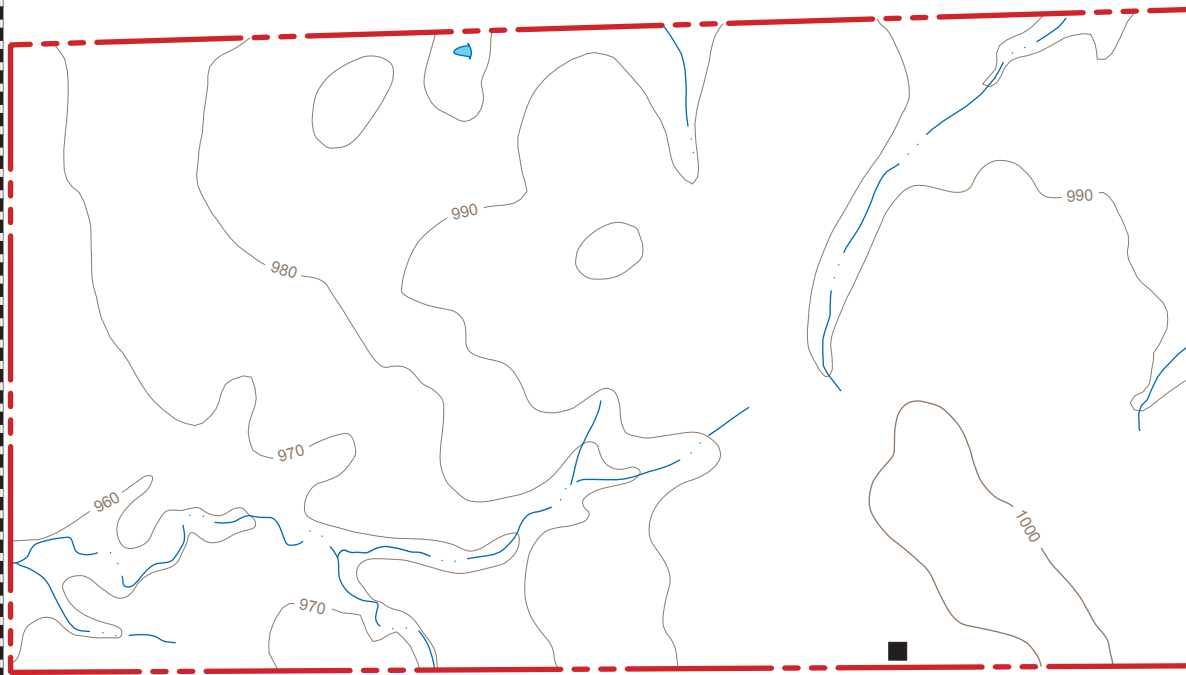


LEGEND

- Boundary
- Paved Road
- Gravel Road
- Drainage
- Pond
- Parking Lot
- Topography



NW 50th Lane



I-49/Hwy. 71 →
4 Miles

DD