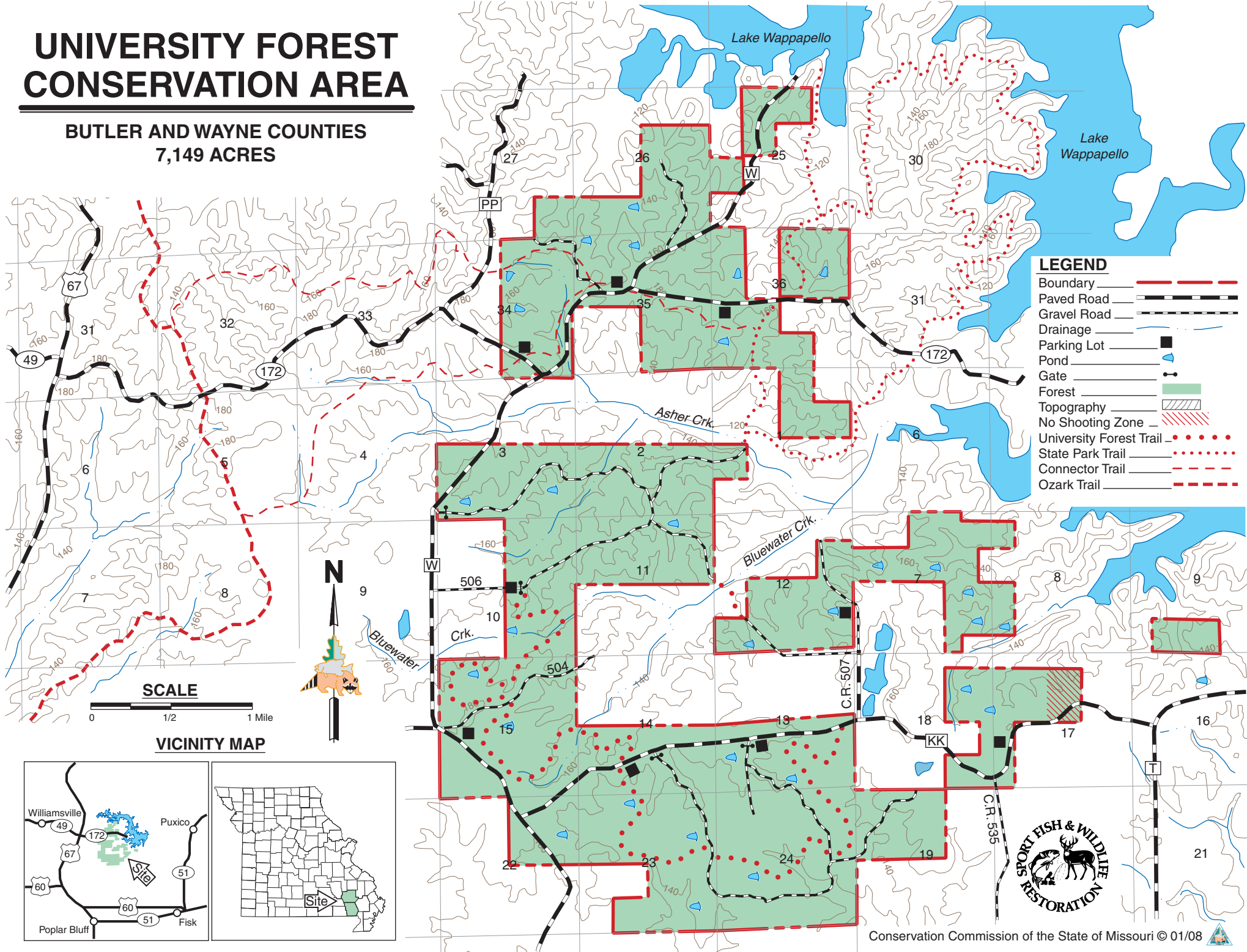


# UNIVERSITY FOREST CONSERVATION AREA

BUTLER AND WAYNE COUNTIES  
7,149 ACRES



**LEGEND**

Boundary	--- (Red dashed line)
Paved Road	— (Black solid line)
Gravel Road	- - - (Black dashed line)
Drainage	— (Blue line)
Parking Lot	■ (Black square)
Pond	● (Blue shape)
Gate	— (Black line with perpendicular tick)
Forest	■ (Green shaded area)
Topography	▨ (Hatched pattern)
No Shooting Zone	▨ (Red hatched pattern)
University Forest Trail	... (Red dotted line)
State Park Trail	... (Black dotted line)
Connector Trail	- - - (Black dashed line)
Ozark Trail	- - - (Red dashed line)



**VICINITY MAP**

