

# REDWING PRAIRIE CONSERVATION AREA

BARTON COUNTY  
160 ACRES

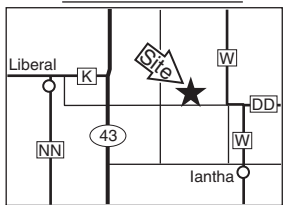


NW 80th Lane

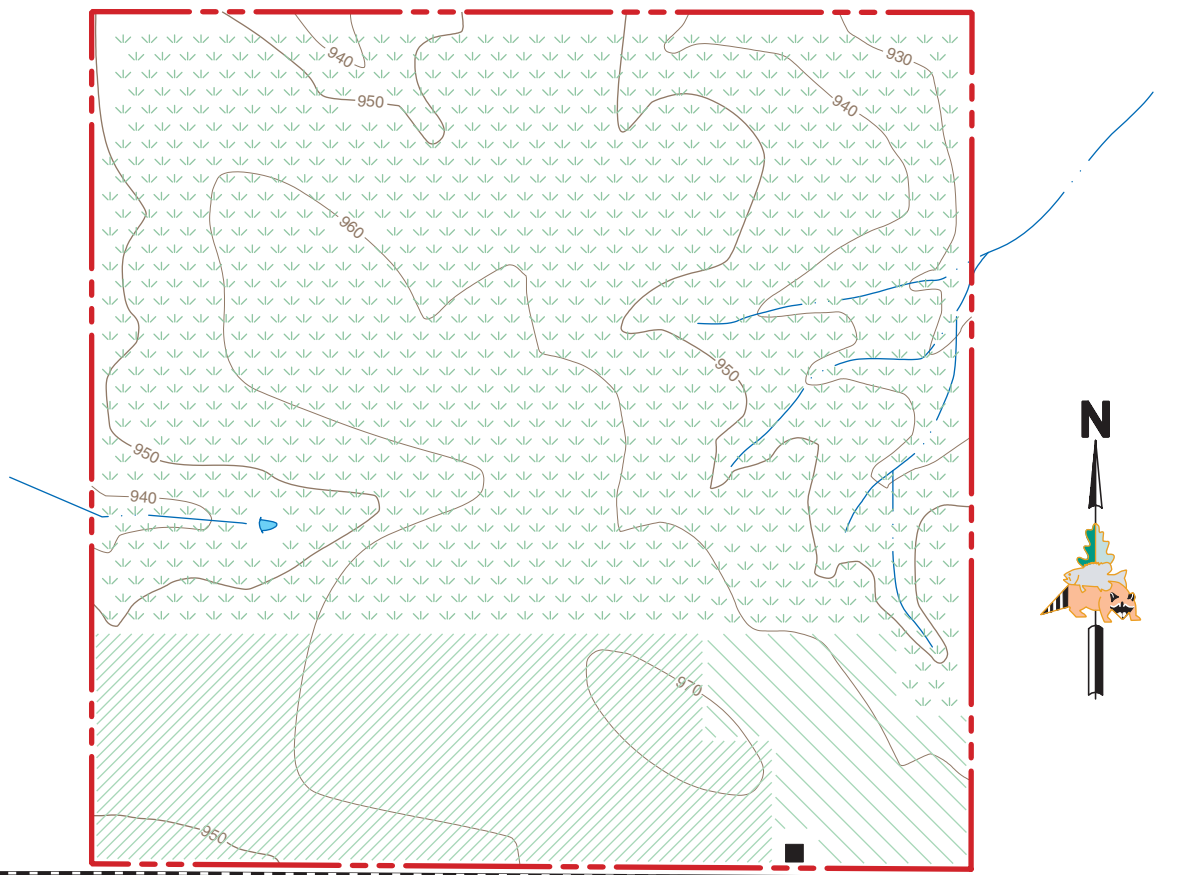
**LEGEND**

- Boundary
- Gravel Road
- Drainage
- Parking Lot
- Pond
- Topography
- Crops
- Idle Crop Ground
- Native Prairie

**VICINITY MAP**



NW 30th Road



NW 70th Lane