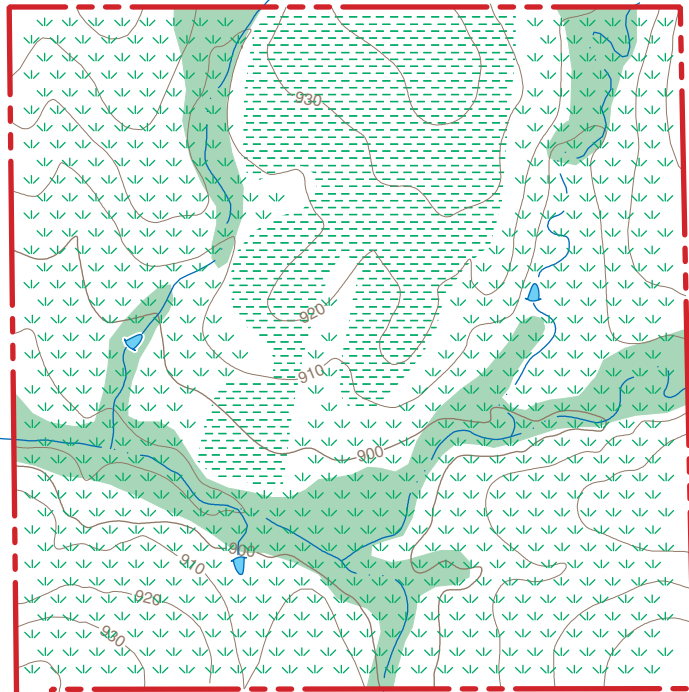


EDWARD B. AND MARIE O. RISCH CONSERVATION AREA

BARTON COUNTY
162 ACRES

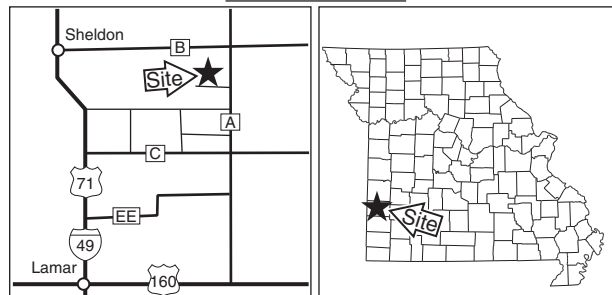


LEGEND

- Boundary
- Gravel Road
- Drainage
- Parking Lot
- Pond
- Crop Field
- Topography
- Native Prairie
- Forest



VICINITY MAP



To Hwy. A →

N.E. 90th Road