

- Seining or trapping live bait, including tadpoles, is prohibited on all impounded waters and their discharge channels.
- Boats may be used for fishing and wildlife-related activities only and may not be stored or left unattended overnight.
- Electric motors only are allowed.

## Hunting and Trapping

*Hunting is allowed under statewide regulations with the following exceptions.*

- Decoys and blinds permitted but must be disassembled and removed daily.
- Trapping allowed only with special use permit. Contact area manager.
- Only portable stands are allowed from September 1 through January 31. Unattended stands must be plainly labeled on durable material with the full name and address or Conservation number of the owner and be removed from the area by February 1st. Use of nails, screw-in steps, and any material or method that would damage the tree is prohibited.
- Trail and game cameras are prohibited.



- Deer and turkey regulations are subject to annual changes. Please refer to Spring Turkey and Fall Deer and Turkey summaries for current regulations.

Nearby Department Areas:  
Clifty Creek Conservation Area  
Spring Creek Gap Conservation Area

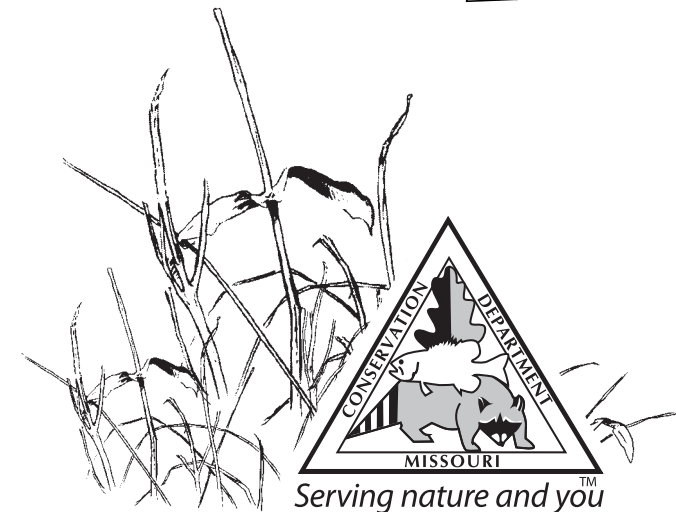
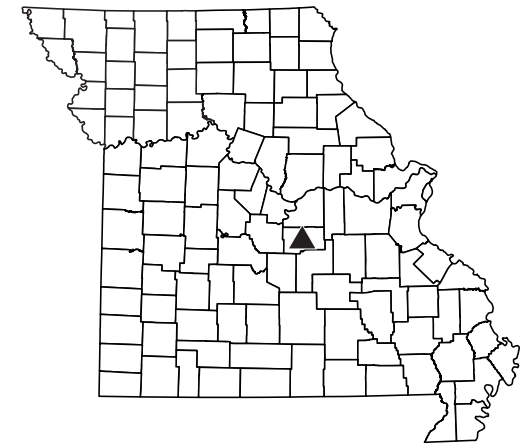
For local information, contact:  
Missouri Department of Conservation  
USDA Service Center  
1315 E. Main  
Linn, MO 65051  
573/897-3797

Visit us at:  
[www.mdc.mo.gov](http://www.mdc.mo.gov)

*Additional area information is posted on bulletin boards located in parking areas and area offices.*

# Rinquelin Trail Lake

## CONSERVATION AREA



5/2016

(Regulations are from the Wildlife Code of Missouri and selected statutes of the State of Missouri. Special area regulations are in Chapter 11 of the Wildlife Code. A free printed copy of the Wildlife Code, which lists most area regulations, is available from the Conservation Department. Chapter 11 in its entirety is available at [www.sos.mo.gov/adrules/csr/current/3csr/3csr.asp](http://www.sos.mo.gov/adrules/csr/current/3csr/3csr.asp).) Equal opportunity to participate in and benefit from programs of the Missouri Department of Conservation is available to all individuals without regard to their race, color, national origin, sex, age or disability. Questions should be directed to the Department of Conservation, P.O. Box 180, Jefferson City, MO 65102, (573) 751-4115 (voice) or 800-735-2966 (TTY), or to the U.S. Fish and Wildlife Service Division of Federal Assistance, 4401 N. Fairfax Drive, Mail Stop: MBSP-4020, Arlington, VA 22203.

MISSOURI DEPARTMENT OF CONSERVATION



## About this Area

Rinquelin Trail Lake is in southwestern Maries County, approximately 11 miles east of Iberia, 15 miles southwest of Vienna, and two miles west of Highway 133. The entrance of the area is ¼ mile south of the west end of county road DD. The 286 acres comprising Rinquelin Trail Lake Conservation Area were acquired by the Conservation Department through five separate transactions between 1982 and 1990. The area is named after an Indian trail that passed through Vienna and connected the Grasconade and Osage rivers. Some early maps named the trail The Rinquelin Trail to the mouth of the Osage River. The area features a 29-acre lake with a boat ramp, a fishing jetty and a double-pit privy all accessible to people with disabilities. The area has three parking lots, accommodating a total of 26 vehicles. Wildlife habitat management on the area includes disturbing old fields, planting native grasses, harvesting timber and includes establishing annual food plots.

## Recreational Opportunities

*Bird Watching – Fishing – Hiking – Camping – Hunting- Outdoor Photography – Wildlife Viewing*



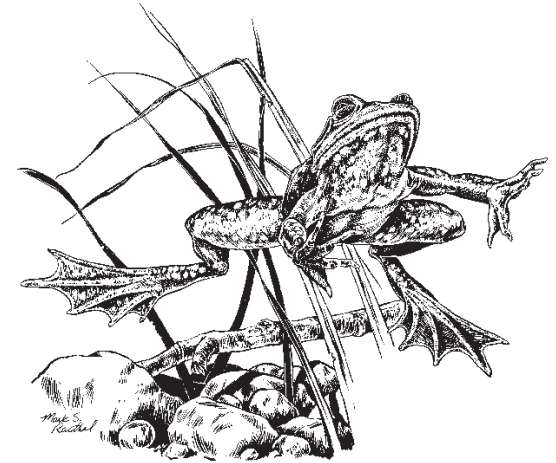
## Rules and Regulations

*Open for public use from 4:00 a.m. to 10:00 p.m.; hunting fishing, trapping, camping, dog training, launching and landing boats allowed 24 hours a day on areas where these activities are permitted.*

- Use of fireworks are prohibited.
- Digging of roots is prohibited on all Conservation areas.
- Nuts, berries, fruits, edible wild greens and mushrooms may be taken only for personal consumption.
- No bicycling opportunity except on public roadways.
- No horseback riding opportunities except on public roadways.
- Pets and hunting dogs are permitted but must be on a leash or confined at all time. Hunting dogs may be used off the leash and unconfined for hunting and training purposes. Hunting permit

required to train dogs in pursuit of wildlife.

- For any activity with groups of 10 or more a special use permit is needed. Contact area manager.
- Camping is allowed anytime in designated camping areas. These may or may not have defined campsites. Seasonal closures and restrictions may apply. Stays are limited to a period of fourteen (14) consecutive days in any thirty (30)-day period
- Target shooting not allowed.
- Vehicles are only permitted on public roadways and in parking lots.



## Fishing and Boating

*Fishing and frogging are allowed under statewide regulations with the following exceptions.*

- On lakes and ponds fish may be taken only with pole and line and not more than three (3) poles may be used by one (1) person at any time.
- Daily limits are six black bass and four channel catfish and 30 crappie. All other fish, total number taken may not exceed 20.
- All black bass less than 15 inches in total length must be returned to the water unharmed immediately after being caught. Head and tail must remain attached on the area or waters to which length limits apply, until such fish have been checked by a Conservation Agent.