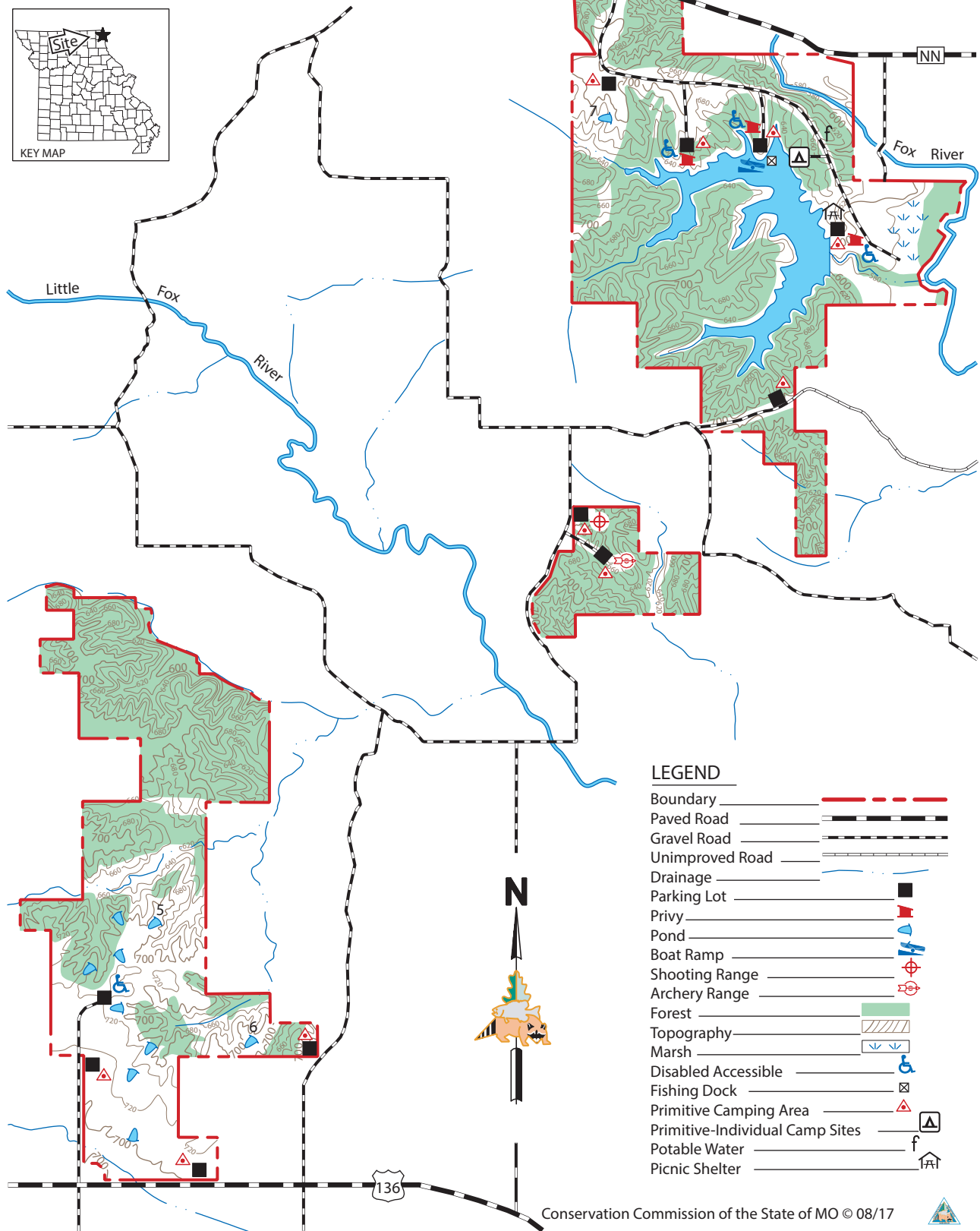
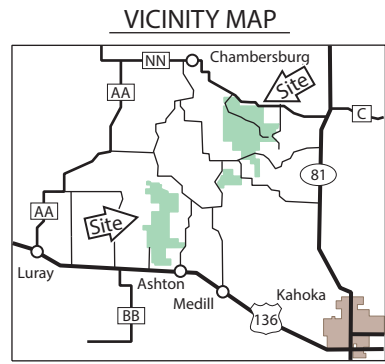
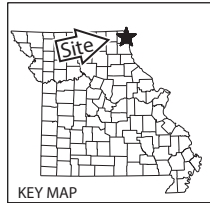


FOX VALLEY LAKE CONSERVATION AREA

CLARK COUNTY
2,159 ACRES



LEGEND

- Boundary
- Paved Road
- Gravel Road
- Unimproved Road
- Drainage
- Parking Lot
- Privy
- Pond
- Boat Ramp
- Shooting Range
- Archery Range
- Forest
- Topography
- Marsh
- Disabled Accessible
- Fishing Dock
- Primitive Camping Area
- Primitive-Individual Camp Sites
- Potable Water
- Picnic Shelter

