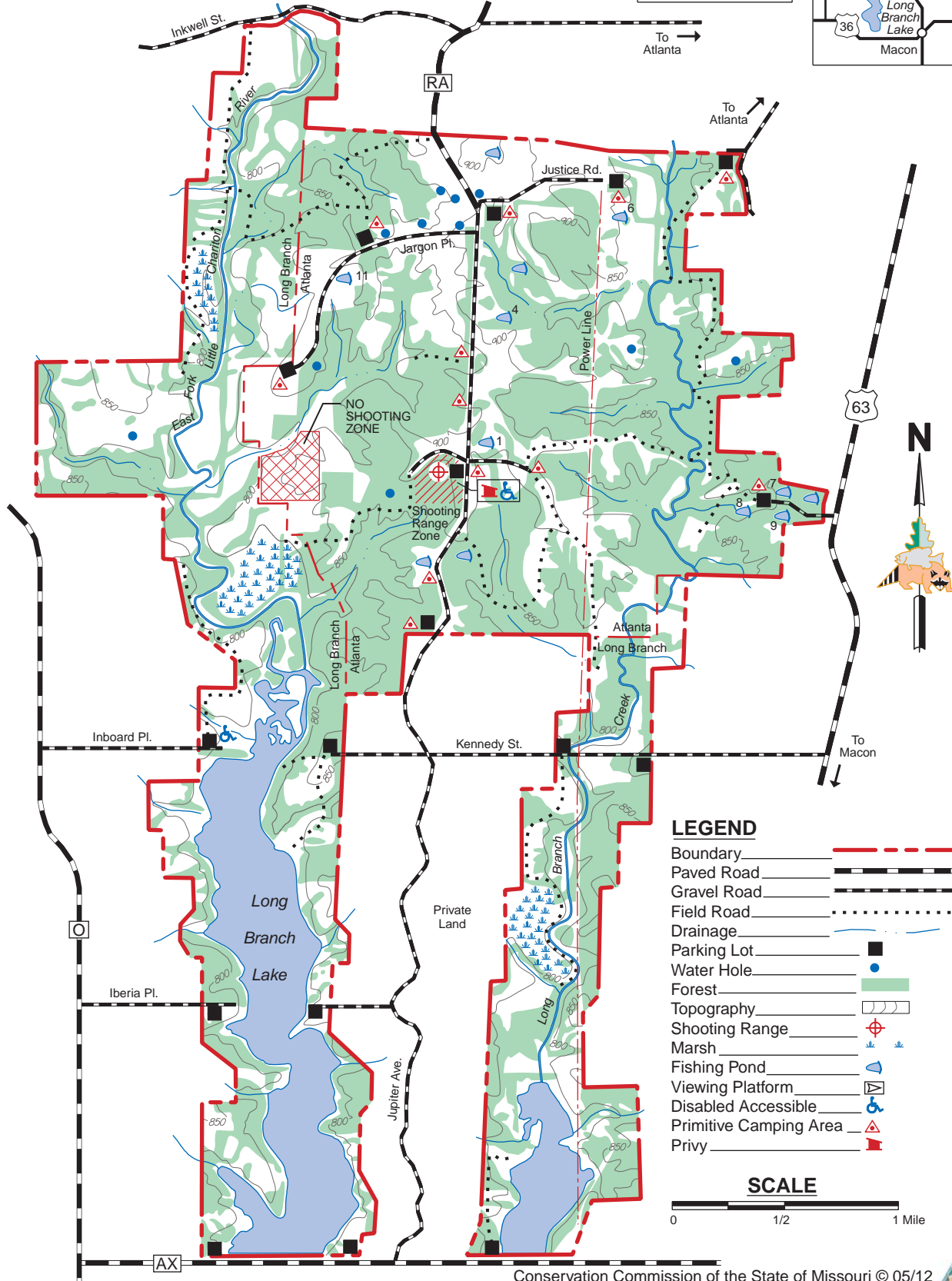
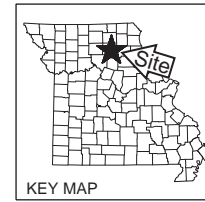
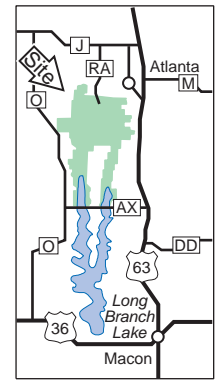


# ATLANTA-LONG BRANCH CONSERVATION AREA

MACON COUNTY  
4,809 ACRES

## VICINITY MAP



### LEGEND

- Boundary
- Paved Road
- Gravel Road
- Field Road
- Drainage
- Parking Lot
- Water Hole
- Forest
- Topography
- Shooting Range
- Marsh
- Fishing Pond
- Viewing Platform
- Disabled Accessible
- Primitive Camping Area
- Privy

### SCALE

0 1/2 1 Mile

