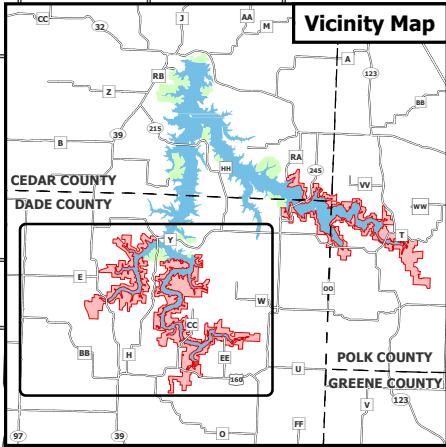
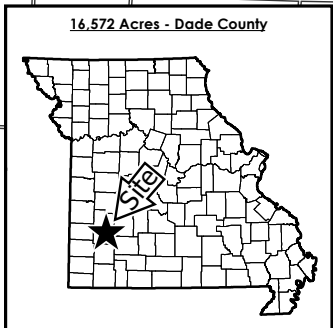




Stockton Lake Big Sac Arm

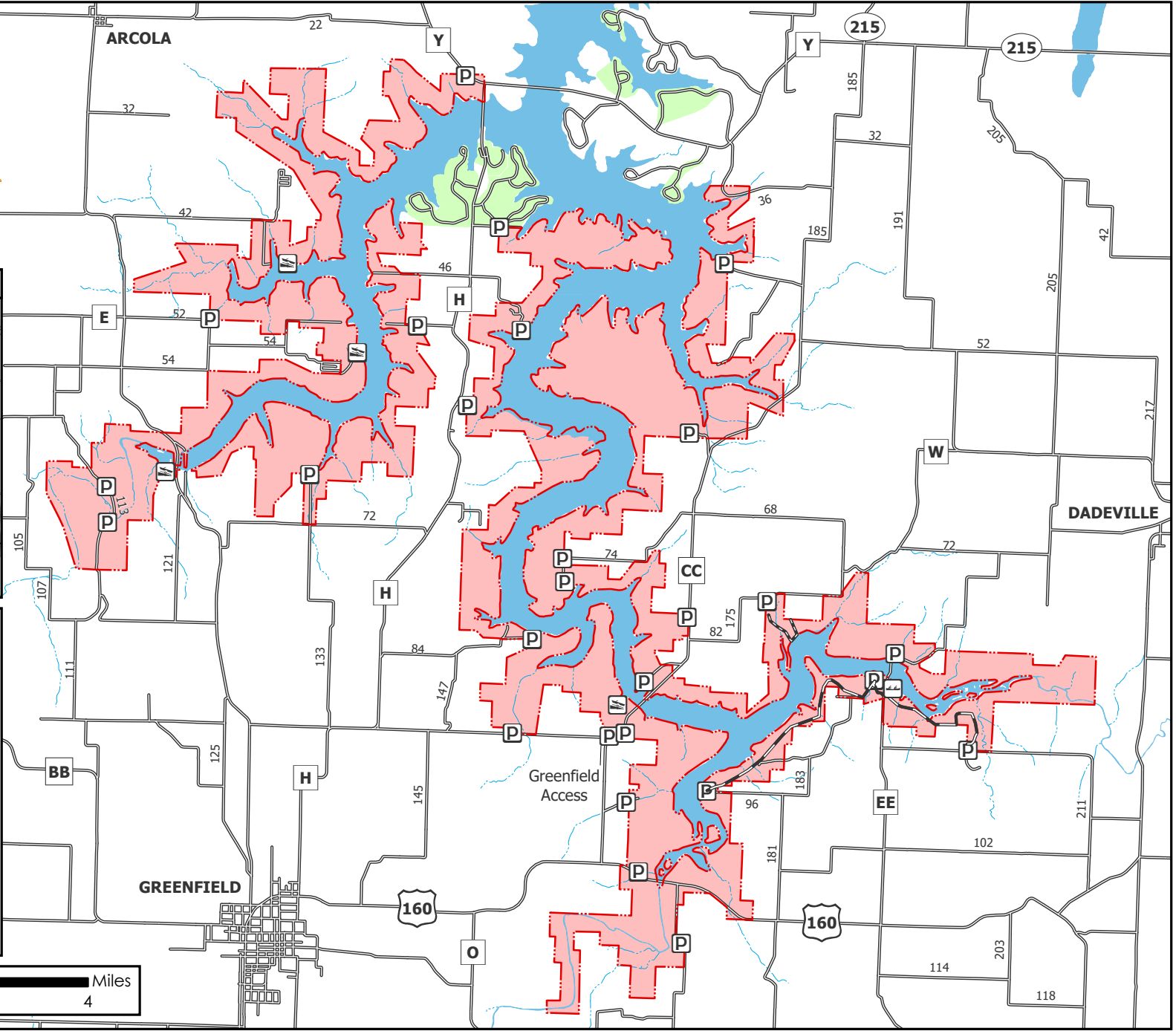
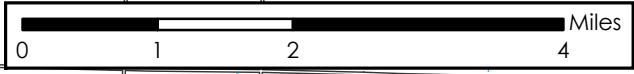
Conservation Commission of the State of Missouri ©

Last Updated - 12/5/2018



Legend

- Parking Lot
- USACE Concrete Boat Ramp
- USACE Non-Concrete Boat Ramp
- MDC Land
- USACE Land
- Hiking Trail
- Hiking/Biking/Equestrian Trail
- Road
- Waterbody
- Stream



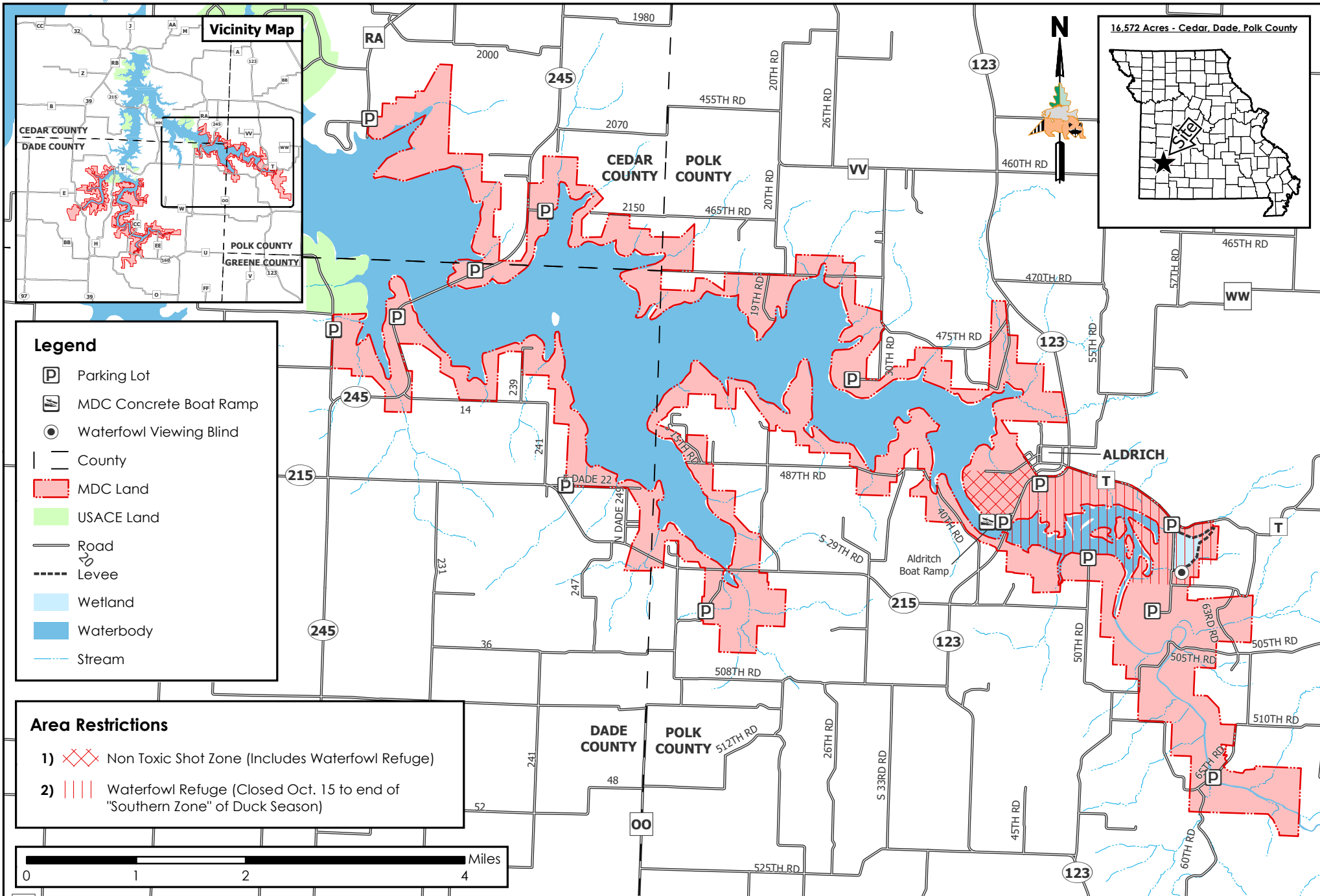
MAP DISCLAIMER: Although all data in this map have been compiled by the Missouri Department of Conservation, no warranty, expressed or implied, is made by the department as to the accuracy of the data and related materials. The act of distribution shall not constitute any such warranty, and no responsibility is assumed by the department in the use of these data or related materials.



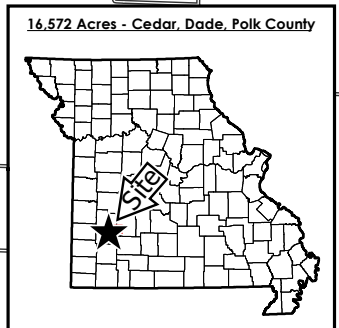
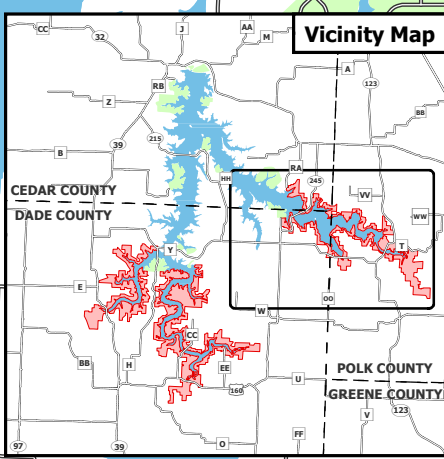
Stockton Lake Little Sac Arm

Conservation Commission of the State of Missouri ©

Last Updated - 10/31/2018



Vicinity Map

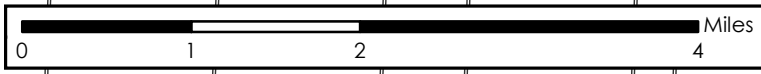


Legend

- Parking Lot
- MDC Concrete Boat Ramp
- Waterfowl Viewing Blind
- County
- MDC Land
- USACE Land
- Road
- Levee
- Wetland
- Waterbody
- Stream

Area Restrictions

- 1) Non Toxic Shot Zone (Includes Waterfowl Refuge)
- 2) Waterfowl Refuge (Closed Oct. 15 to end of "Southern Zone" of Duck Season)



MAP DISCLAIMER: Although all data in this map have been compiled by the Missouri Department of Conservation, no warranty, expressed or implied, is made by the department as to the accuracy of the data and related materials. The act of distribution shall not constitute any such warranty, and no responsibility is assumed by the department in the use of these data or related materials.