

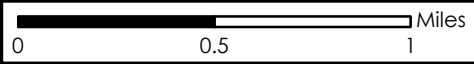
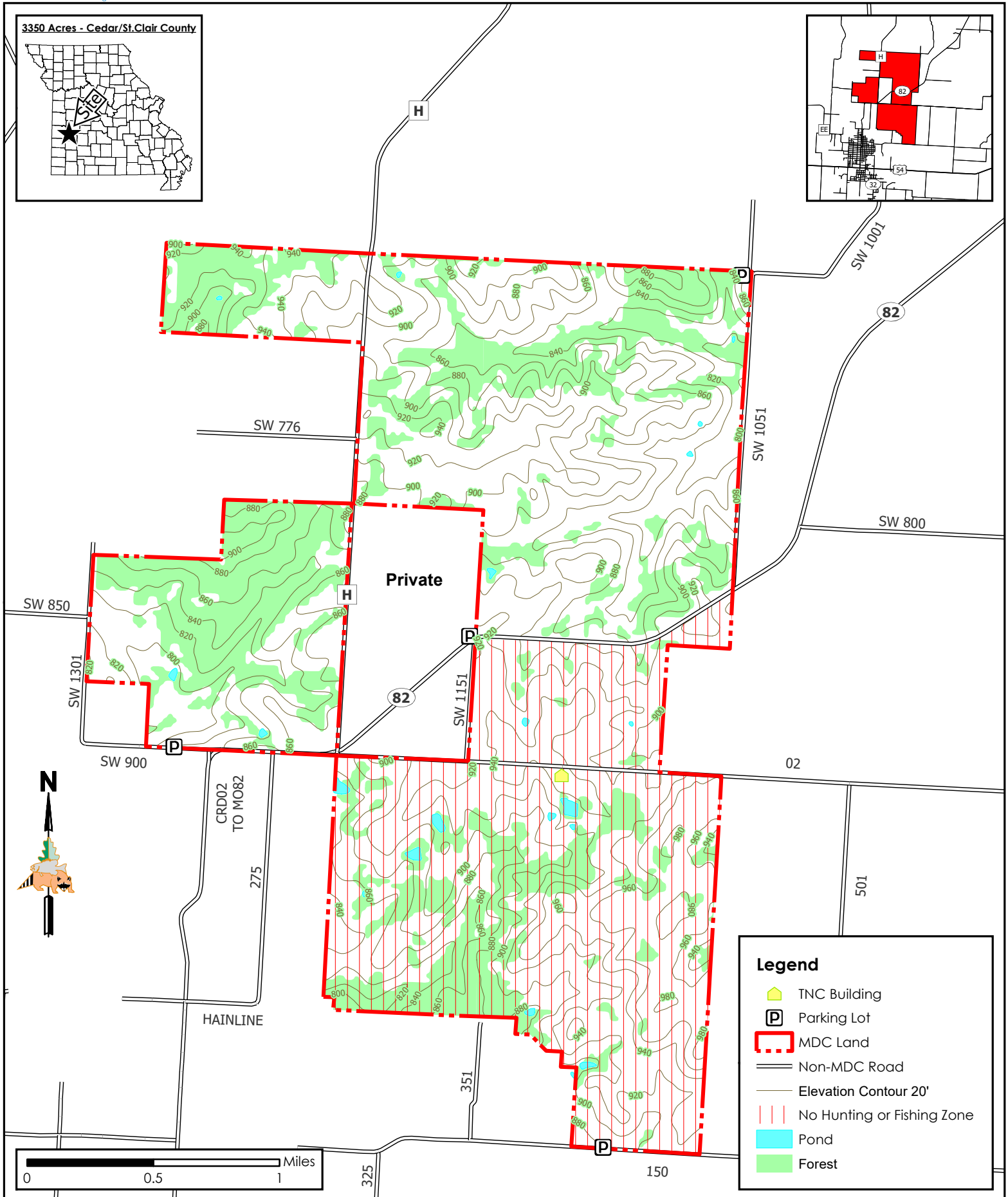
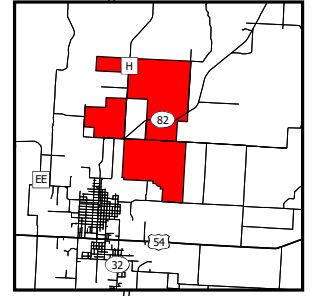
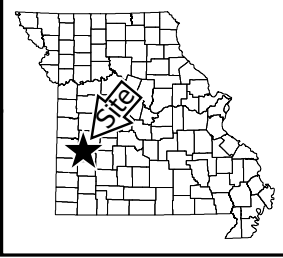


Wah'Kon-Tah Prairie Conservation Area

Conservation Commission of the State of Missouri ©

Last Updated - 11/23/2020

3350 Acres - Cedar/St.Clair County



Legend

- TNC Building
- Parking Lot
- MDC Land
- Non-MDC Road
- Elevation Contour 20'
- No Hunting or Fishing Zone
- Pond
- Forest

MAP DISCLAIMER: Although all data in this map have been compiled by the Missouri Department of Conservation, no warranty, expressed or implied, is made by the department as to the accuracy of the data and related materials. The act of distribution shall not constitute any such warranty, and no responsibility is assumed by the department in the use of these data or related materials.