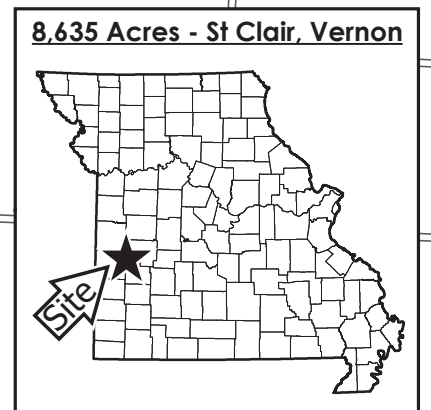
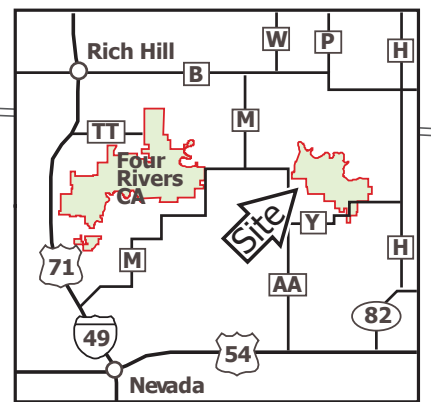
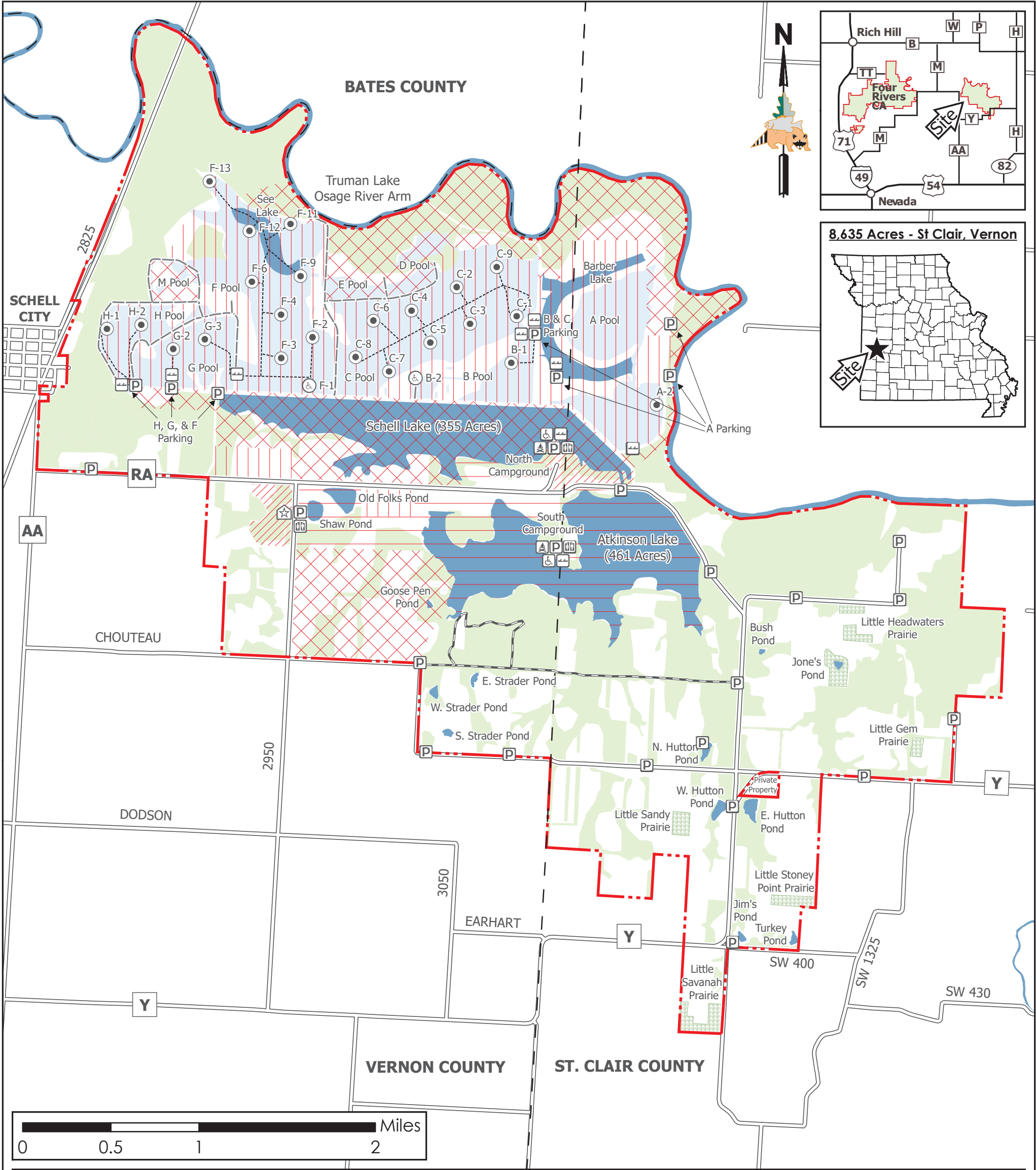




Schell-Osage Conservation Area

Conservation Commission of the State of Missouri ©

Last Updated - 6/21/2019



Legend

- | | | | | |
|---------------------|---------------------------|-------------------------|---------------|----------------|
| Disabled Accessible | Privy | Waterfowl Hunting Blind | Hiking Trail | Boat Lane |
| MDC Office | Non-Concrete Boat Ramp | County | Prairie | Waterbody |
| Parking Lot | Disabled Accessible Blind | MDC Land | Forested Area | Waterfowl Pool |
| Primitive Camping | Road | Levee | | |

Area Restrictions

- 1) Use or possession of lead shot is prohibited.
- 2) Deer hunting by archery methods only.
- 3) No Hunting With Firearms (Jan. 1 - Dec. 31)
- 4) Waterfowl Refuge (Closed to all use Oct. 15- Mar. 1)
- 5) Waterfowl Hunting Only (Oct. 15th - Feb. 15)
- 6) Wildlife Refuge (Closed to all use Oct. 15 - Mar. 1)
(Closed to hunting Mar. 2 - Oct. 14)

MAP DISCLAIMER: Although all data in this map have been compiled by the Missouri Department of Conservation, no warranty, expressed or implied, is made by the department as to the accuracy of the data and related materials. The act of distribution shall not constitute any such warranty, and no responsibility is assumed by the department in the use of these data or related materials.