

DRAFT

Phenix Access

Fifteen-Year Area Management Plan

FY 2019-2033



**To submit a comment on this document,
click on the following link:**

<https://mdc.mo.gov/node/10013?ap=312140>

OVERVIEW

- **Official Area Name:** Phenix Access, # 8039
- **Year of Initial Acquisition:** 1980
- **Acreage:** 155 acres
- **County:** Greene
- **Region:** Southwest
- **Division with Administrative Responsibility:** Forestry
- **Division with Maintenance Responsibility:** Forestry
- **Statements of Purpose**

A. Strategic Direction

Phenix Access is managed to enhance forest health and quality, wildlife habitat, clean and healthy water habitats; and provide public fishing and outdoor recreational opportunities. This area provides public access to Clear Creek in Greene County.

B. Desired Future Condition

The desired future condition of the area is a complex of Clear Creek, mixed hardwood forest, intensively managed pecan and walnut plantations, fields of warm-season grasses and forbs, and old fields with interspersed food plots that provide diverse habitats for wildlife and public use.

C. Federal Aid Statement

N/A

GENERAL INFORMATION AND CONDITIONS

I. Special Considerations

A. **Priority Areas:** Nathaniel Boone Limestone Glade Conservation Opportunity Area

B. **Natural Areas:** None

II. Important Natural Features and Resources

A. **Species of Conservation Concern:** None observed.

B. **High Quality Natural Communities:** None

C. **Caves:** None

D. **Springs:** None

E. **Other:** The area is located in the Springfield Plain Subsection of the Ozark Highland Section (Nigh & Schroeder, 2002). The area is located in the Upper Sac River Oak Savanna/Woodland Low Hills Landtype Association (Nigh & Schroeder, 2002).

III. Existing Infrastructure

- One parking lot

IV. Area Restrictions or Limitations

- A. Deed Restrictions or Ownership Considerations:** None
- B. Federal Interest:** Federal funds may be used in the management of this land. Fish and wildlife agencies may not allow recreational activities and related facilities that would interfere with the purpose for which the State is managing the land. Other uses may be acceptable and must be assessed in each specific situation.
- C. Easements:** The Greene County Highway Department has a roadway easement along Farm Road 33 that continues across Clear Creek. Empire Electric has a powerline crossing at Farm Road 33 and the northwest corner of the area (Figure 4).
- D. Cultural Resources Findings:** No known cultural resources.
- E. Endangered Species:** None observed.
- F. Boundary Issues:** None

MANAGEMENT CONSIDERATIONS

V. Terrestrial Resource Management Considerations

Challenges and Opportunities:

- 1) Maintain a healthy riparian corridor.
- 2) Reduce the prevalence of invasive species.
- 3) Manage forest and woodland with best management practices.
- 4) Reduce open land.

Management Objective 1: Maintain a riparian corridor that is at least 100 feet in width, where feasible.

Strategy 1: Only conduct timber removal within the riparian corridor to correct major issues as needed. (Forestry)

Strategy 2: Manage the riparian corridor according to the Missouri Department of Conservation (MDC) Watershed and Stream Management Guidelines for Lands and Waters Managed by Missouri Department of Conservation (MDC, 2009). (Forestry)

Management Objective 2: Identify and control new and existing populations of invasive species.

Strategy 1: Control invasive species using chemical and mechanical methods. (Forestry)

Strategy 2: Routinely assess effectiveness of ongoing treatment on invasive species. (Forestry)

Management Objective 3: Continue long-term forest management through the promotion of natural tree regeneration and maintenance of tree plantations within riparian zones.

Strategy 1: Continue to intensively manage black walnut and pecan plantations for wildlife benefits and to serve as a demonstration area for private landowners. (Forestry)

Strategy 2: Follow forestry best management practices for bottomland forest and mixed hardwood plantations management according to *Missouri Forest Management Guidelines: Voluntary Recommendations for Well-Managed Forests* (MDC, 2014). (Forestry)

Strategy 3: As needed, conduct a forest inventory to determine natural regeneration and the health and vigor of tree plantations. (Forestry)

Management Objective 4: Enhance forestland habitat within open land

Strategy 1: Reduce the amount of open land by 50 percent to 30+/- acres through tree plantations over three years. (Forestry)

VI. Aquatic Resource Management Considerations

Challenges and Opportunities:

- 1) Phenix Access is located on Clear Creek (a fourth-order stream) in the Sac River basin. Aquatic features consist of 0.75 miles of Clear Creek and two intermittent streams (0.32 miles total).
- 2) Bank and wade fishing opportunities for a variety of sunfish and catfish species are available in Clear Creek. No fishing impoundments exist on the area.
- 3) Quality riparian corridors exist along streams, but past incision has created steep streambanks.

Management Objective 1: Maintain and/or enhance functionality and quality of streams on the area.

Strategy 1: Continue to implement stream best management practices, as outlined in MDC's *Watershed and Stream Management Guidelines for Lands and Waters Managed by Missouri Department of Conservation* (MDC, 2009). (Forestry, Fisheries)

Strategy 2: Address channel and streambank instability as needed. (Forestry, Fisheries)

Strategy 3: Continue to implement appropriate best management practices regarding field access roads and service roads to minimize runoff and sedimentation into stream resources. (Forestry)

VII. Public Use Management Considerations

Challenges and Opportunities:

- 1) Phenix Access offers public use opportunities, including bank-fishing, hunting, wildlife viewing, and trapping.
- 2) Enforce area regulations.
- 3) Inform public about recreational use opportunities and area regulations.

Management Objective 1: Provide bank-fishing access to Clear Creek and its tributaries as well as other recreational opportunities.

Strategy 1: Maintain parking lot to provide access to public recreational opportunities. (Forestry)

Management Objective 2: Enforce area regulations.

Strategy 1: Regularly patrol and enforce the *Wildlife Code of Missouri*, with emphasis on vandalism, littering, and response to public complaints. (Protection, Forestry)

Management Objective 3: Inform public about recreational use opportunities and area regulations.

Strategy 1: Maintain signs according to MDC policy. (Forestry)

Strategy 2: Maintain accurate and timely information on MDC's website. Review information annually. (Forestry)

VIII. Administrative Considerations

Challenges and Opportunities:

- 1) Maintain area infrastructure for public use and enjoyment.
- 2) Maintain good relationships with neighboring landowners.

Management Objective 1: Maintain area infrastructure for public use and enjoyment.

Strategy 1: Ensure parking area is maintained according to MDC policy to facilitate recreational activities. (Forestry)

Management Objective 2: Maintain good relationships with neighboring landowners.

Strategy 1: Maintain clearly identified property lines by inspecting and marking on a two-year cycle. (Forestry)

Strategy 2: Work with neighbors to minimize boundary issues, trespass, or any other issues affecting the conservation area or adjoining private property.
(Forestry, Protection)

Lands Proposed for Acquisition:

When available, adjacent land may be considered for acquisition from willing sellers. Tracts that improve area access, provide public use opportunities, contain unique communities and/or species of conservation concern, or meet other MDC priorities, as identified in the annual MDC land acquisition priorities, may be considered.

APPENDICES

Area Background:

Phenix Access was purchased with MDC funds in 1981, and it was acquired to provide additional fishing opportunities within Greene County. This area is primarily made up of gently rolling hills, hardwood plantations, and flat bottomland. The area boundary currently encompasses 154.5 acres and is located in Greene County (Section 4 of Township 30N, Range 24W). Clear Creek, a year-round flowing prairie stream, transects most of the area from south to north for approximately 0.75 miles.

Area Location: Phenix Access is approximately 3 miles north of Ash Grove, just east of Highway V. Driving directions: Highway V north from Ash Grove to Farm Road 33, east on Farm Road 33 approximately ¼ mile to access (Figure 1).

Management History:

1. After purchase, 56 acres were managed by permittee farmers as cropland until 1995.
2. A 9-acre black walnut multi-crop plantation was established in 1983.
3. In 1990, mixed oak hardwood seedlings (black oak, bur oak, and white oak) were planted in 9 acres of open fields.
4. In 1992, single rows of pecan seedlings were planted between field units in the eastern portion of the area.
5. In 1993, a timber sale comprised of 54 black walnut trees occurred throughout the area totaling 13,207 board feet (International ¼ rule).
6. The 56 acres previously managed as permittee farmer cropland was converted into native warm-season grasses and forbs between 2007 and 2008.
7. Walnut and pecan plantation trees have been pruned periodically to promote growth and improve form.

Current Land and Water Types:

Land/Water Type	Acres	% of Area	Miles
Forest and Woodland	95	61	
Old Field	55	36	
Grassland (non-prairie)	5	3	
Total	155	100	
Stream Frontage			1.07

References:

Missouri Department of Conservation. (2009). *Watershed and stream management guidelines for lands and waters managed by Missouri Department of Conservation*. Jefferson City, MO: Missouri Department of Conservation.

Missouri Department of Conservation. (2014). *Forest management guidelines: Voluntary recommendations for well-managed forests*. Jefferson City, MO: Missouri Department of Conservation.

Nigh, T. A., & Schroeder, W. A. (2002). *Atlas of Missouri ecoregions*. Jefferson City, MO: Missouri Department of Conservation.

Maps:

Figure 1: Area Map

Figure 2: Aerial Map

Figure 3: Topographic Map

Figure 4: Easement Map

Figure 5: Land Cover Map

Figure 6: Forest and Woodland Management Map

Figure 1: Area Map

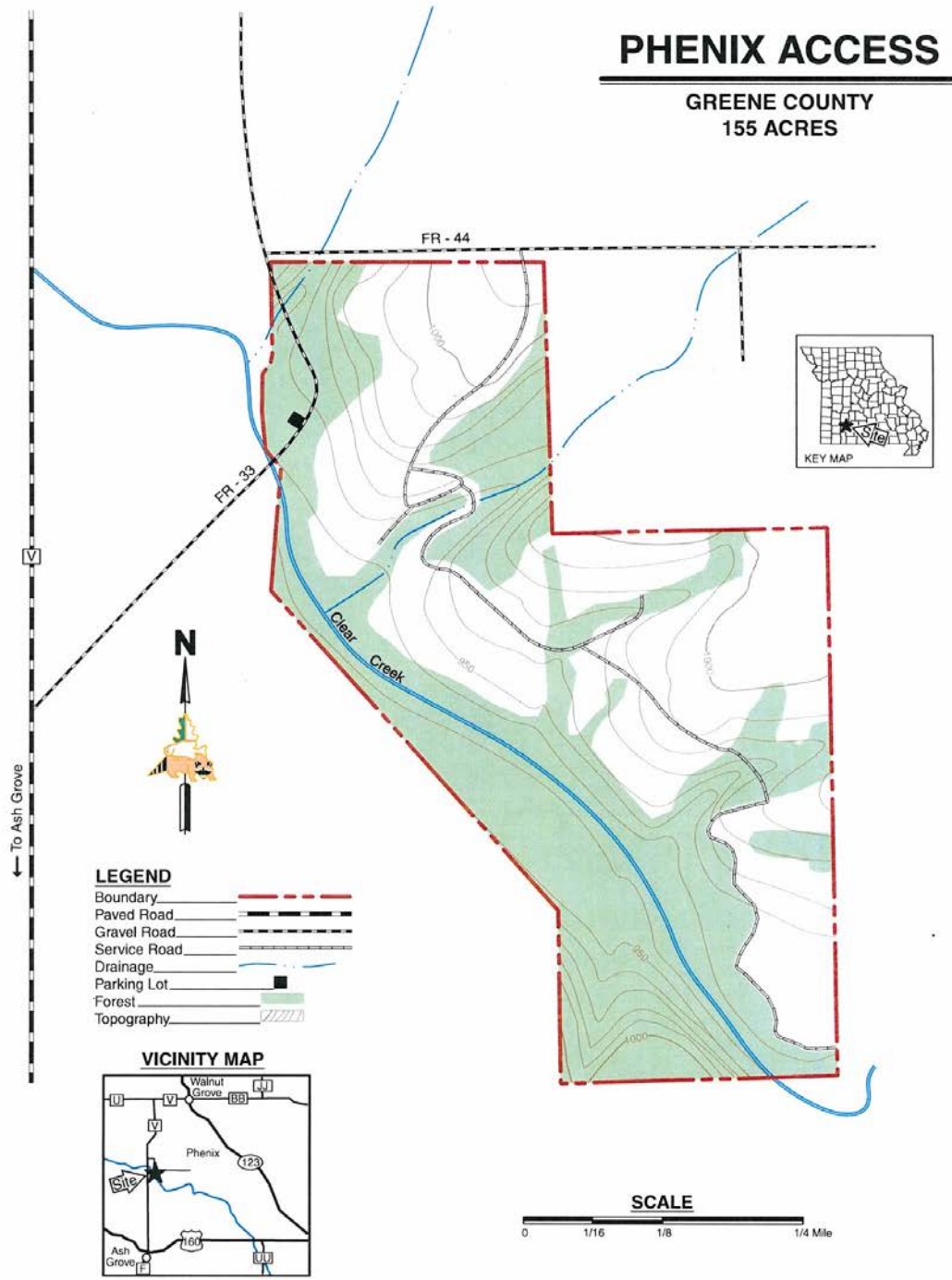


Figure 2: Aerial Map

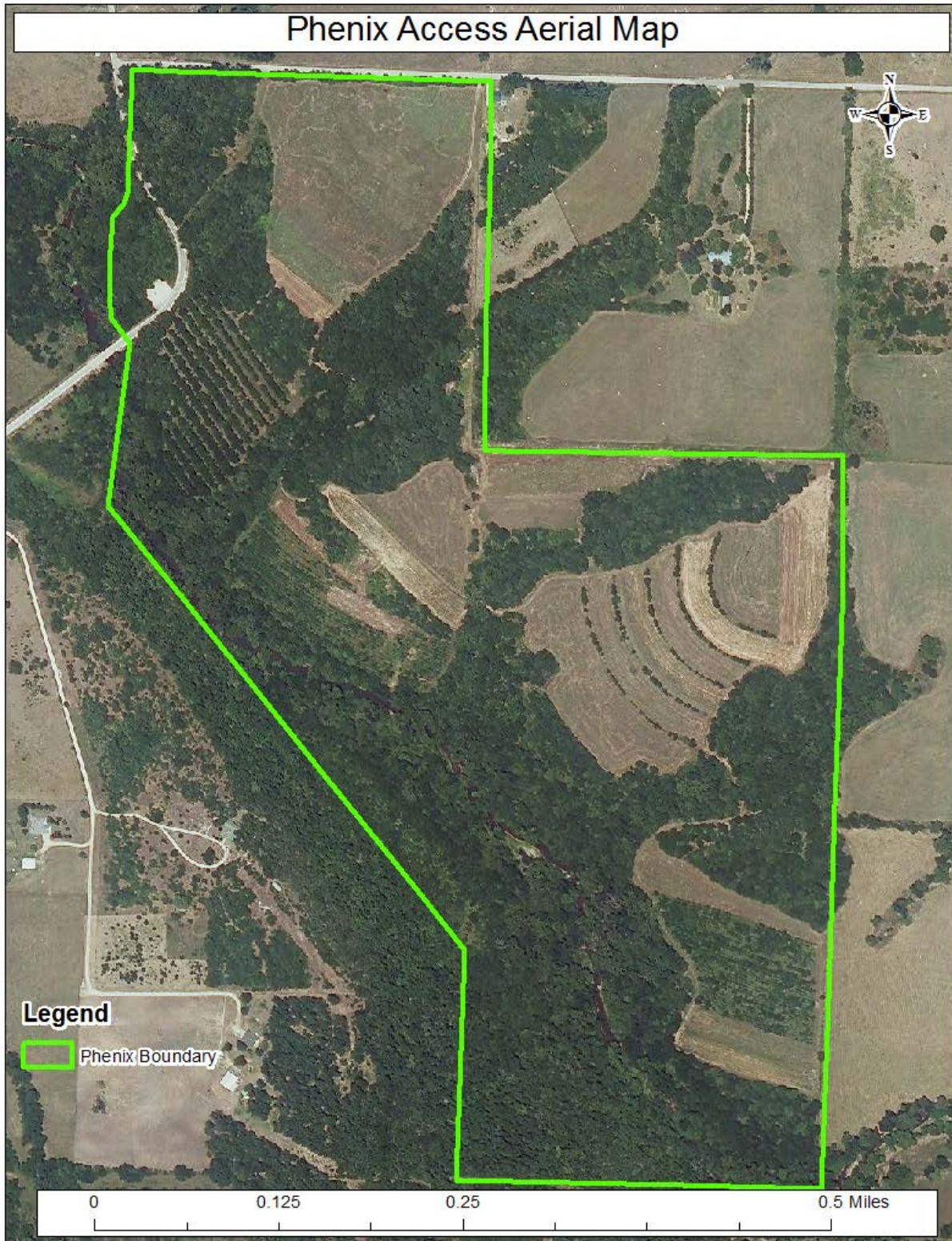


Figure 3: Topographic Map

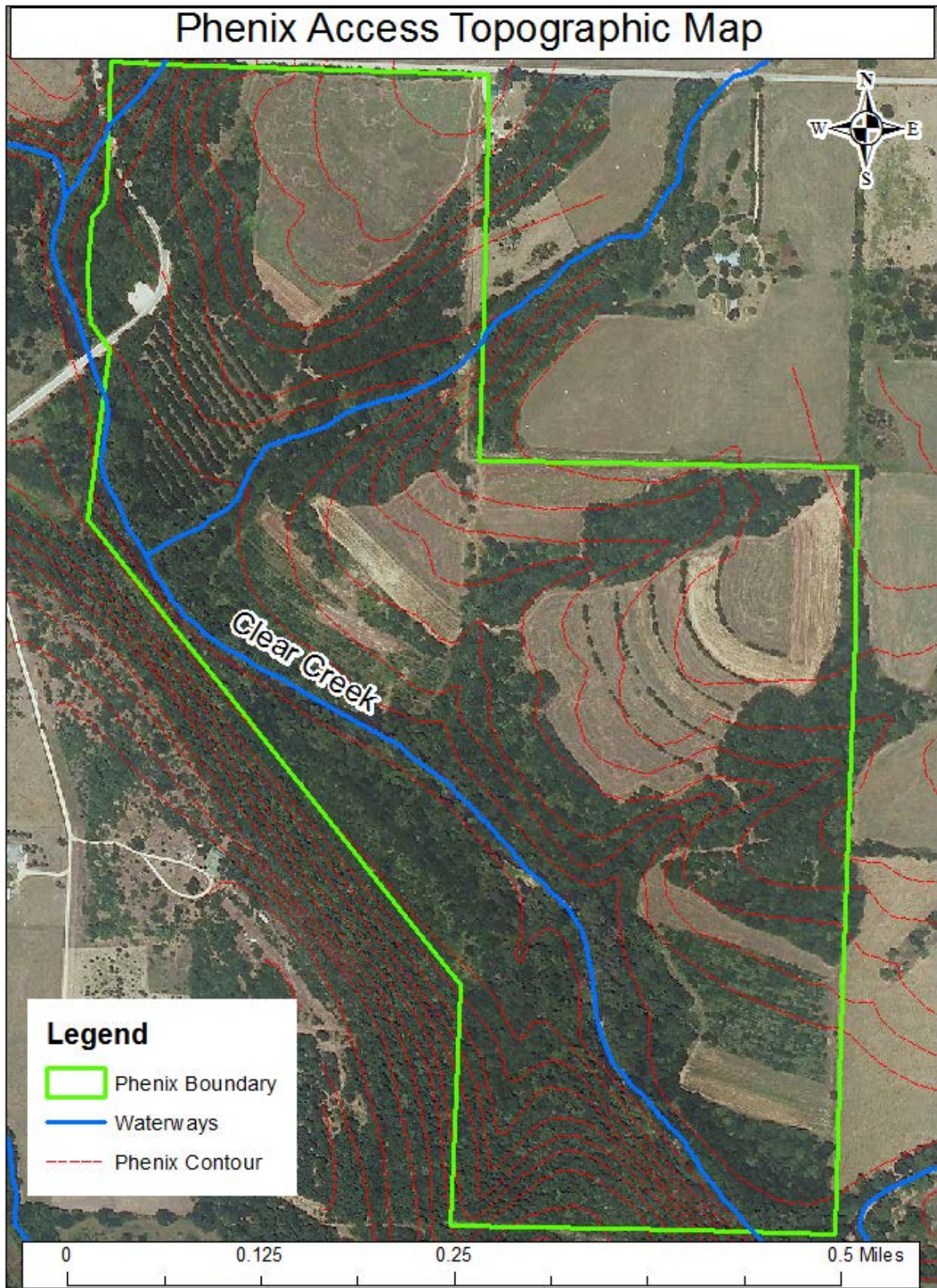


Figure 4: Easement Map

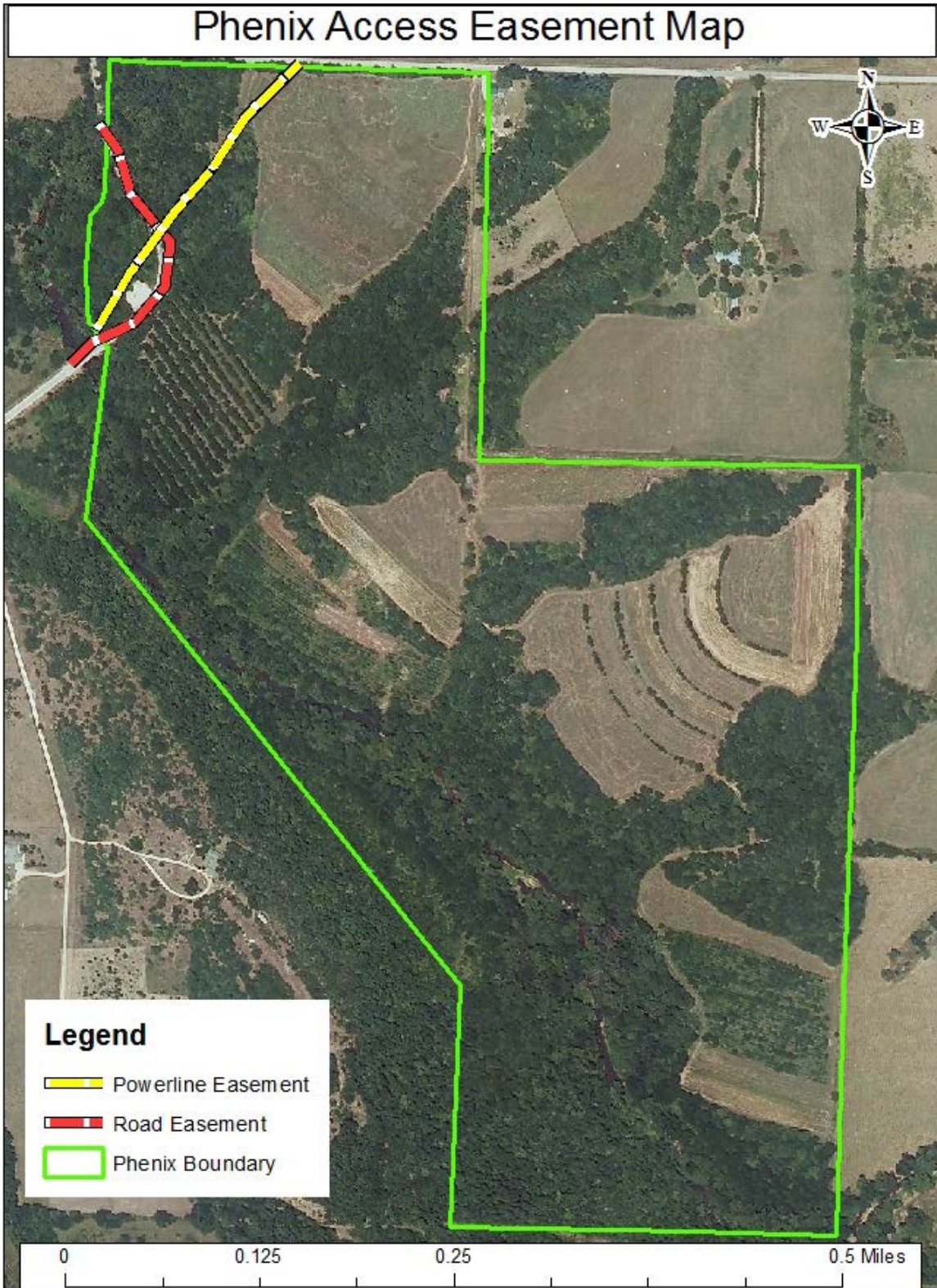


Figure 5: Land Cover Map

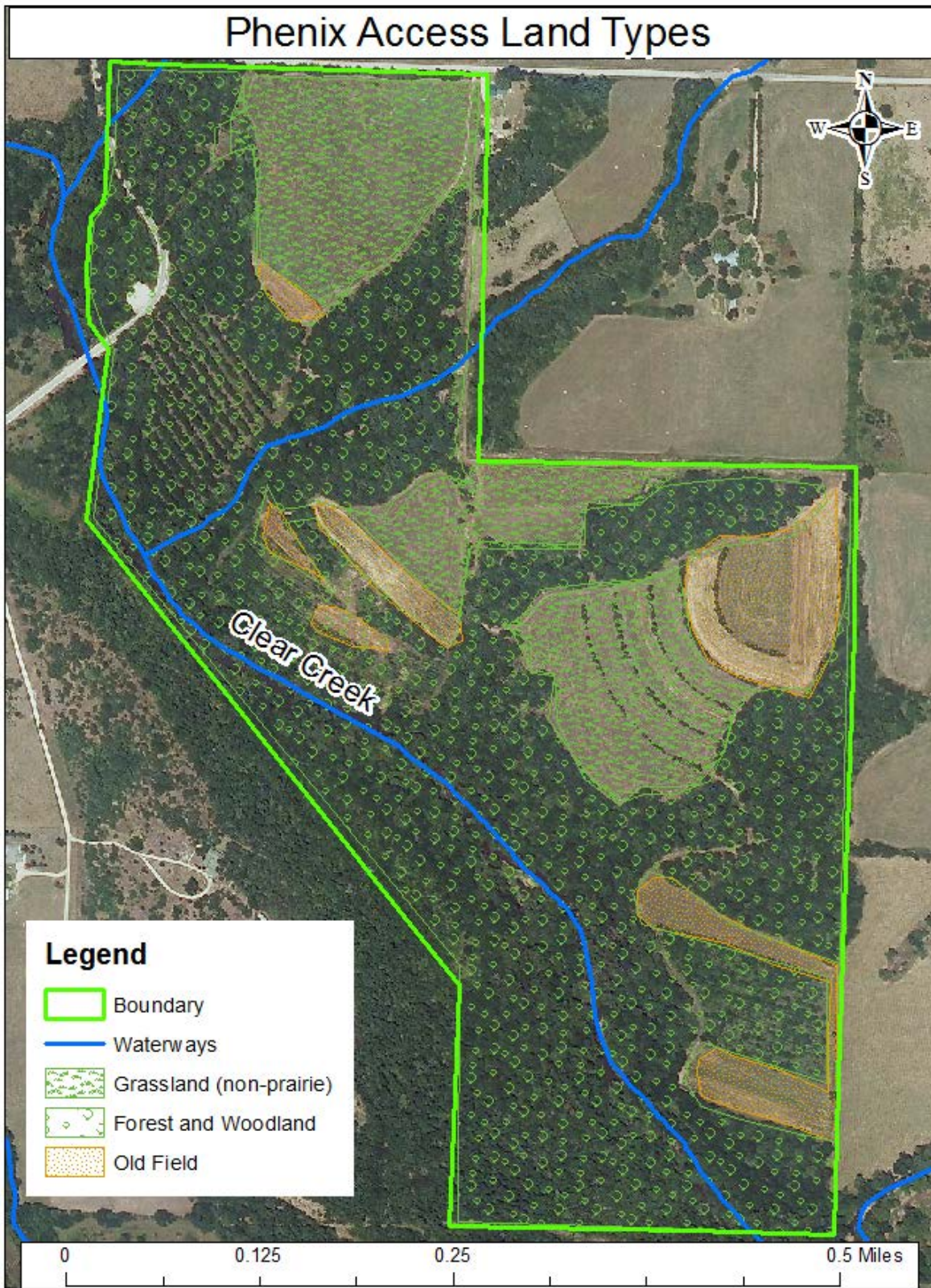
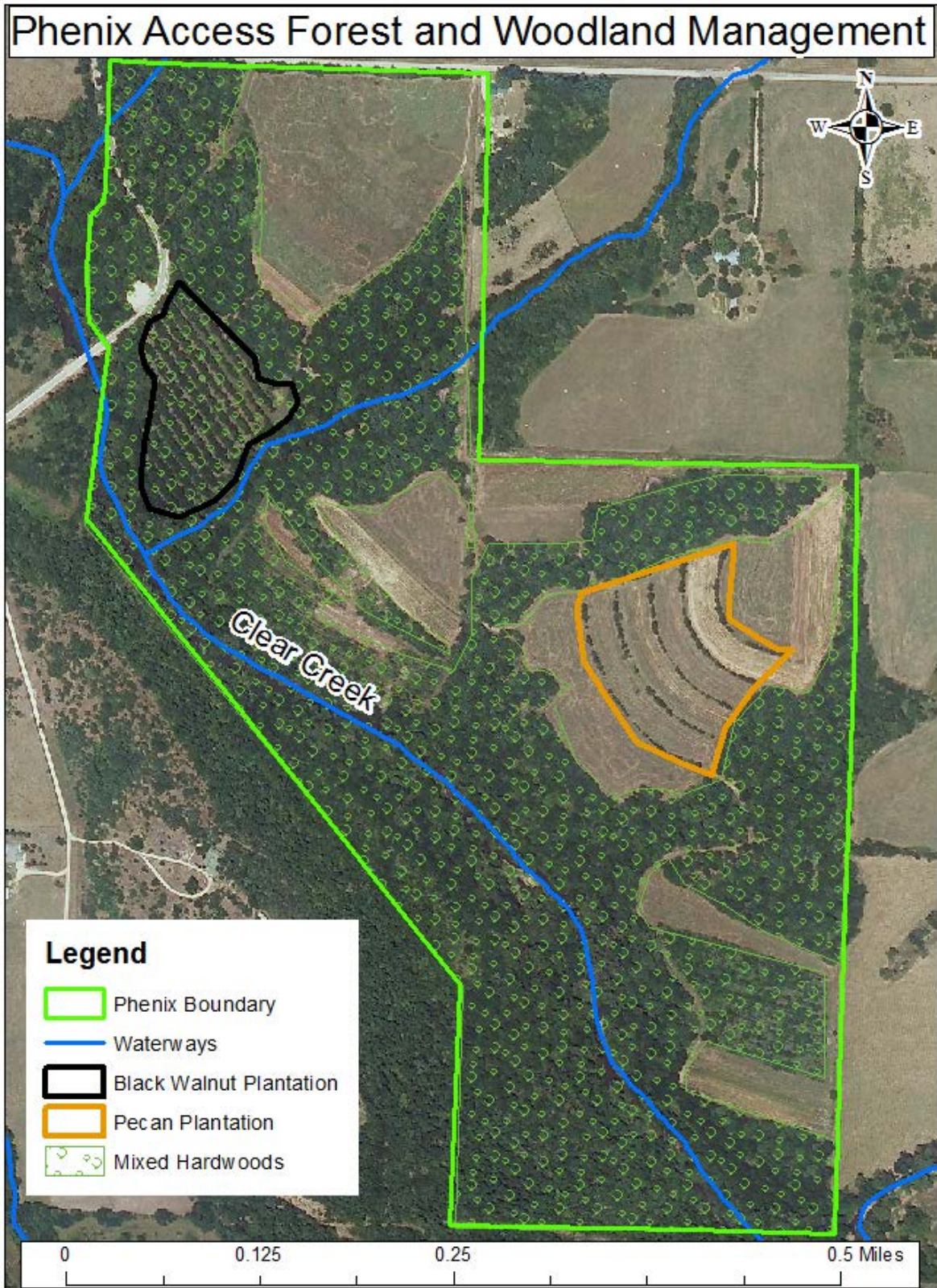


Figure 6: Forest and Woodland Management Map



**To submit a comment on this document,
click on the following link:**

<https://mdc.mo.gov/node/10013?ap=312140>