

DRAFT

Marais Temps Clair

Conservation Area

25-Year Area Management Plan
FY 2020-2044



**To submit a comment on this document,
click on the following link:**

<https://mdc.mo.gov/node/10013?ap=315820>

OVERVIEW

- **Official Area Name:** Marais Temps Clair Conservation Area, # 7902
- **Year of Initial Acquisition:** 1979
- **Acreage:** 918 acres
- **County:** Saint Charles
- **Region:** St. Louis
- **Division with Administrative Responsibility:** Wildlife
- **Division with Maintenance Responsibility:** Wildlife
- **Statements of Purpose:**
 - A. **Strategic Direction**

Provide an opportunity for diverse public use by managing wetland and bottomland natural communities in a way that balances fish, forest, and wildlife resources with public recreational use.
 - B. **Desired Future Condition**

The desired future condition of Marais Temps Clair Conservation Area (CA) is to maintain healthy moist-soil and robust perennial marsh wetland communities for the benefit of wildlife while promoting Missouri's outdoor heritage.
 - C. **Federal Aid Statement**

This area, or a portion thereof, was developed with North American Wetland Conservation Act funds to conserve and restore wetland habitats.

GENERAL INFORMATION AND CONDITIONS

- I. **Special Considerations**
 - A. **Priority Areas:** Missouri/Mississippi River Confluence Wetlands – Wetland Conservation Opportunity Area
 - B. **Natural Areas:** None
- II. **Important Natural Features and Resources**
 - A. **Species of Conservation Concern:** Species of conservation concern are known from this area. Area managers should consult the Natural Heritage Database annually and review management activities affecting species of conservation concern with the natural history biologist.
 - B. **High Quality Natural Communities:** None
 - C. **Caves:** None
 - D. **Springs:** None

Other: According to Nigh and Schroder (2002): Marais Temps Clair CA lies within the Missouri River Alluvial Plain Subsection. The majority of the area lies in the Ozark Highlands Ecological Section of Missouri in the Marais Temps Clair

Alluvial Plain Landtype Association. Historically, this landtype was dominated by bottomland prairie and long sweeping marshes in partially filled oxbows that shared space with bottomland forest. The northern portion of the area lies in the Central Dissected Plains Ecological Section of Missouri in the St. Charles/Lincoln Alluvial Plain Landtype. Historically, this landtype was dominated by wet prairie and marshes. Timber was restricted to bordering active channels of the river and islands. Most acreage in these landtypes has been converted to agriculture.

III. Existing Infrastructure

- Four parking lots
- One waterfowl hunting blind (Americans with Disabilities [ADA] accessible)
- Five wetland pumping stations and one dewatering pump
- One metal shop building
- Eleven wetland pools with associated levees and pool drain structures

IV. Area Restrictions or Limitations

A. Deed Restrictions or Ownership Considerations: None

B. Federal Interest: This land must be used to conserve and restore wetlands. The federal funds made available under the North American Wetlands Conservation Act (NAWCA) may not be used for fish and wildlife mitigation purposes under the Fish and Wildlife Coordination Act or the Water Resources Development Act of 1986. Federal funds may also be used in the management of this land. Fish and wildlife agencies may not allow recreational activities and related facilities that would interfere with the purpose for which the State is managing the land. Other uses may be acceptable and must be assessed in each specific situation.

C. Easements: There are three pipeline easements on the conservation area.

D. Cultural Resources Findings: Yes, records kept with Missouri Department of Conservation (MDC) environmental compliance coordinators. Managers should follow best management practices for cultural resources found in the MDC Resource Policy Manual.

E. Endangered Species: Endangered species are known from this area. Area managers should consult the Natural Heritage Database annually and review all management activities with the natural history biologist.

F. Boundary Issues: None

MANAGEMENT CONSIDERATIONS

V. Terrestrial Resource Management Considerations

Challenges and Opportunities:

- 1) Restore, enhance, and maintain a diverse mix of wetland habitat types.
- 2) Restore and manage bottomland prairies/wet prairies.
- 3) Control tree encroachment in wetland pools.
- 4) Control invasive plant species.
- 5) Manage and enhance bottomland forests if feasible.

Management Objective 1: Restore, enhance, and maintain a diverse mix of wetland habitat types.

Strategy 1: On an annual basis, seasonally flood between 450 and 540 acres of wetland for fall migratory waterfowl, marsh birds, shorebirds, and other wetland-dependent species. Manage water levels on 250 to 400 acres of wetlands to provide available habitat through spring water bird migration. (Wildlife)

Strategy 2: Continue to manage emergent wetlands in the lower elevations of the wetland pools and moist-soil plant production in the upper elevations. (Wildlife)

Management Objective 2: Restore and manage bottomland prairie/wet prairie natural communities.

Strategy 1: Identify areas where bottomland prairie/wet prairie was historically present. (Wildlife)

Strategy 2: Manage these areas with native vegetation establishment, mechanical and chemical disturbance, and prescribed fire to enhance habitat. (Wildlife)

Management Objective 3: Restore portions of wetland pools overtaken by undesirable tree encroachment to balance open herbaceous wetlands, where practical.

Strategy 1: Identify areas where tree invasion has occurred. (Wildlife)

Strategy 2: Utilize management techniques, including mechanical tree removal, chemical application, water management, and prescribed fire, to set back trees. (Wildlife)

Management Objective 4: Control invasive plant species.

Strategy 1: Identify areas where reed canary grass, Phragmites, Japanese hops vine, sericea lespedeza, bush honeysuckle, and other invasive species occur.

(Wildlife)

Strategy 2: Use proven treatment methods to reduce invasive plant species.

(Wildlife)

Management Objective 5: Manage and enhance bottomland forests.

Strategy 1: Inventory and review current bottomland forest areas for the possibility of enhancing them via thinning, limited planting of bottomland hardwoods, or other forest management techniques. (Forestry)

Strategy 2: Utilize best management practices during all forest management activities, as described in MDC's manuals *Missouri Watershed Protection Practice* manual (MDC, 2014b) and the *Missouri Forest Management Guidelines: Voluntary Recommendations for Well-Managed Forests* (MDC, 2014a).

(Forestry)

VI. Aquatic Resource Management Considerations

Challenges and Opportunities:

- 1) Provide habitat for aquatic species, especially those that are wetland obligates for part or all of their life cycle.

Management Objective 1: Provide seasonal habitat for aquatic species, especially those that are wetland obligates for part or all of their life cycle.

Strategy 1: Continue to provide diverse habitats and plant communities that meet the life history needs of aquatic species, including aquatic reptiles, amphibians, crustaceans, and insects. (Wildlife, Fisheries)

Strategy 2: Consider removing fish from certain pools or ditches to provide fishless habitat for other aquatic species. (Fisheries)

VII. Public Use Management Considerations

Challenges and Opportunities:

- 1) Provide hunting, trapping, fishing, and wildlife viewing opportunities.
- 2) Conduct managed waterfowl drawings.
- 3) Improve educational and interpretive opportunities.
- 4) Build relationships with neighboring landowners.
- 5) Enforce the *Wildlife Code of Missouri* during all hunting activities on the area.

Management Objective 1: Provide hunting, trapping, fishing, and wildlife viewing opportunities.

Strategy 1: Continue to enhance wetland, open land, bottomland prairie/wet prairie, forest and aquatic habitats to provide for sustainable fish and wildlife populations on the area. (Wildlife)

Strategy 2: Provide adequate early-season fall wetland habitat for migrating teal, rail, and snipe. Facilitate an open-hunting program for teal, rail, and snipe. (Wildlife)

Strategy 3: Maintain deer and turkey hunting through the statewide managed hunt program. (Wildlife)

Strategy 4: Maintain a law enforcement presence throughout the year. (Protection)

Strategy 5: Consider the feasibility of providing additional new hunter/youth hunting opportunities on the area. (Outreach and Education)

Strategy 6: Continue to provide opportunities for angling and bow-fishing. (Wildlife)

Strategy 7: Conduct additional law enforcement patrols as resource and non-resource activities warrant them, e.g., during managed hunts and other peak-use times. (Protection)

Management Objective 2: Conduct managed waterfowl drawings.

Strategy 1: Provide duck hunting opportunities as time and budgets allow. (Wildlife)

Strategy 2: Conduct managed youth waterfowl drawings during the statewide youth waterfowl season. (Wildlife)

Management Objective 3: Improve educational and interpretive opportunities.

Strategy 1: Communicate to the public recreational opportunities provided on the area (e.g., using area maps, MDC website). (Wildlife)

Strategy 2: Communicate to teachers and other youth leaders the uniqueness of the area to facilitate as a possible destination for ecology and natural resource classes, school field trips, and interpretive programs. (Outreach and Education)

Management Objective 4: Facilitate good working relationships with neighboring landowners.

Strategy 1: Continue to maintain signage in a way that clearly designates MDC property boundaries. (Wildlife)

Strategy 2: Respond quickly and effectively to neighboring landowner questions, comments, and concerns. (Wildlife)

Strategy 3: Promote habitat management on neighboring landowner properties. (Private Land Services)

VIII. Administrative Considerations

Challenges and Opportunities:

- 1) Maintain area infrastructure at current levels.
- 2) Maintain area signage.
- 3) Consider acquisition of land, when available.

Management Objective 1: Maintain area infrastructure at current levels.

Strategy 1: Maintain area infrastructure in accordance with MDC guidelines.
(Wildlife)

Management Objective 2: Maintain area signage in accordance with MDC guidelines.

Strategy 1: Check and replace area boundary signs, every five years or as needed. Check and replace waterfowl refuge signs each year before the statewide waterfowl season. Maintain bulletin boards and signs in accordance with MDC guidelines. (Wildlife)

Lands Proposed for Acquisition:

When available, adjacent land may be considered for acquisition from willing sellers. Tracts that improve area access, provide public use opportunities, contain unique natural communities and/or species of conservation concern, or meet other MDC priorities, as identified in the annual MDC land acquisition priorities, may be considered.

MANAGEMENT TIMETABLE

Strategies are considered ongoing unless listed in the following table:

	Fiscal Years																									
	2020	2021	2022	2023	2024	2025	2026	2027	2028	2029	2030	2031	2032	2033	2034	2035	2036	2037	2038	2039	2040	2041	2042	2043	2044	
Terrestrial Resource Management Considerations																										
<i>Objective 2</i>																										
Strategy 1			X																							
<i>Objective 5</i>																										
Strategy 1			X																							
Aquatic Resource Management Considerations																										
<i>Objective 1</i>																										
Strategy 2		X																								
Public Use Management Considerations																										
<i>Objective 1</i>																										
Strategy 5		X																								
Administrative Considerations																										
<i>Objective 2</i>																										
Strategy 1		X					X					X					X						X			

APPENDICES

Area Background:

Marais Temps Clair CA consists of a 918-acre tract of land that was purchased in 1979 as a result of a partial donation, and funds from the Design for Conservation sales tax. Initial renovation of the area began in 1984 and was completed in 1987. Since the initial renovation, one other major wetland project occurred in 2007 that leveed off a portion of Pool 6 to create wetland Pool 6a.

Marais Temps Clair Marsh is an old oxbow of the Missouri River that was formed before the arrival of European settlers. Records show that an attempt was made to drain Marais Temps Clair before 1875 by constructing a ditch through the middle of the marsh. By the late 1880s the drainage project was abandoned.

Since the late 1800s, the land included in Marais Temps Clair CA was maintained as a restricted access hunting club until it was purchased by MDC. The majority of land surrounding Marais Temps Clair CA has been converted to production crops with the exception of various private duck clubs within the Missouri River and Mississippi River floodplains.

Current Land and Water Types:

Land/Water Type	Acres	% of Area	Feet
Wetlands and Open Water	570	62	
Openland	173	19	
Infrastructure	117	13	
Forest	45	5	
Grassland	13	1	
Total	918	100	
Stream Frontage			0

References:

Missouri Department of Conservation. (2014a). *Missouri forest management guidelines: Voluntary recommendations for well-managed forests*. Jefferson City, MO: Conservation Commission of the State of Missouri.

Missouri Department of Conservation. (2014b). *Missouri watershed protection practice recommended practices for Missouri forests: 2014 management guidelines for maintaining forested watersheds to protect streams*. Jefferson City, MO: Conservation Commission of the State of Missouri.

Nigh, T. A., & Schroeder, W. A. (2002). *Atlas of Missouri ecoregions*. Jefferson City, MO: Missouri Department of Conservation.

Maps:

Figure 1: Area Map

Figure 2: Aerial Map

Figure 3: Topographic Map

Figure 4: Land Cover Map

Figure 5: Easement Map

Figure 1: Area Map

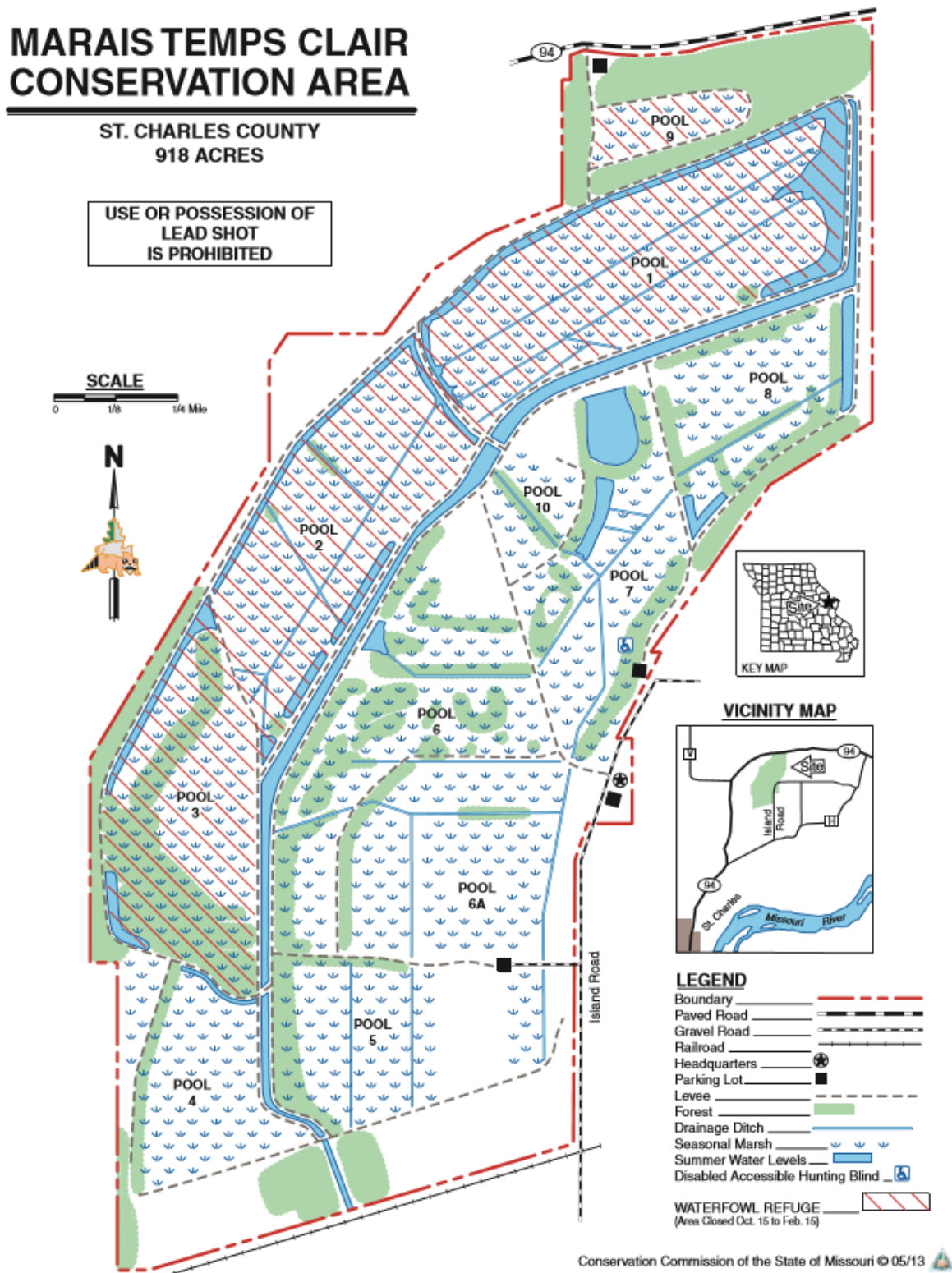


Figure 2: Aerial Map

Marais Temps Clair Conservation Area

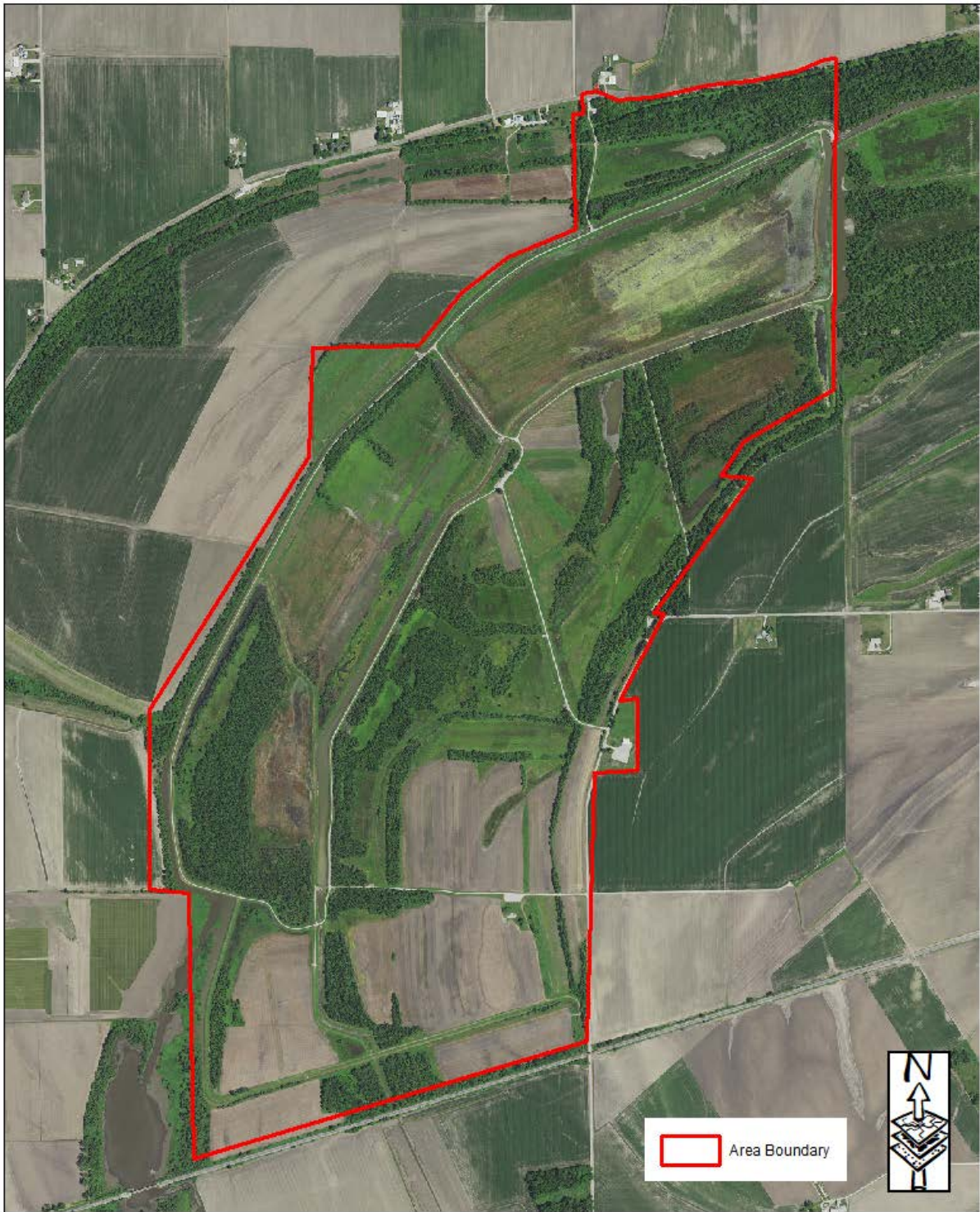


Figure 3: Topographic Map

Marais Temps Clair Conservation Area

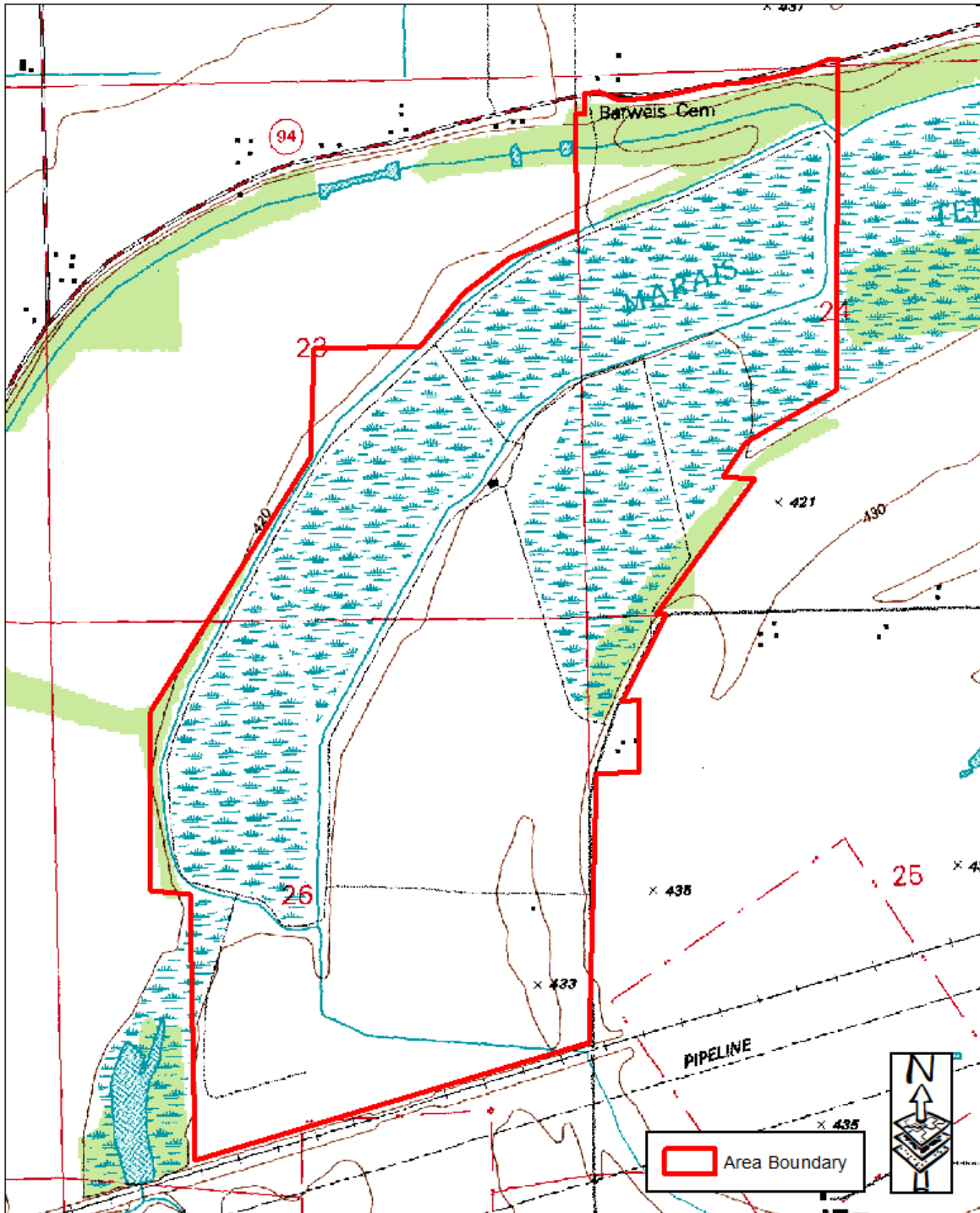


Figure 4: Land Cover Map

Marais Temps Clair Conservation Area

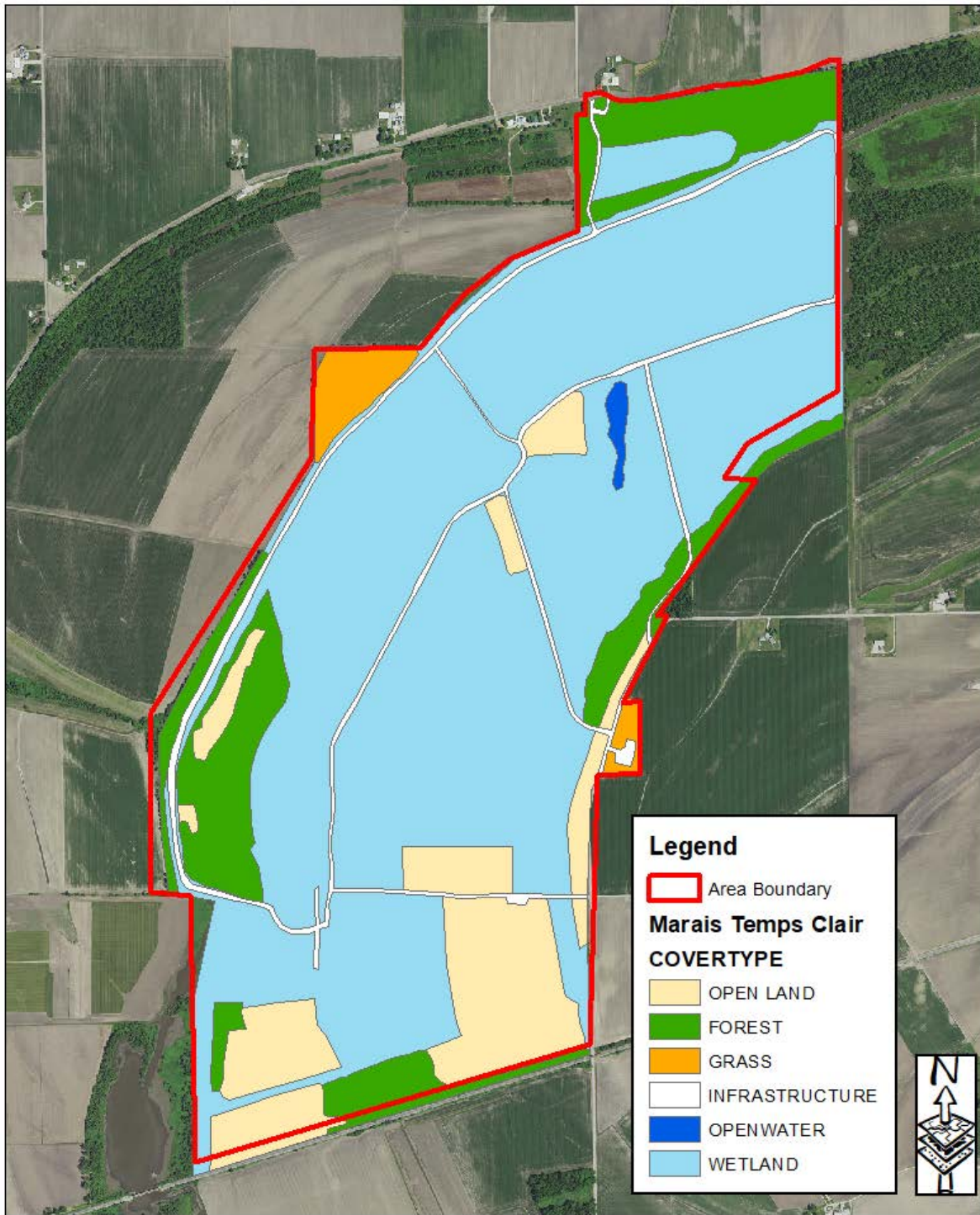
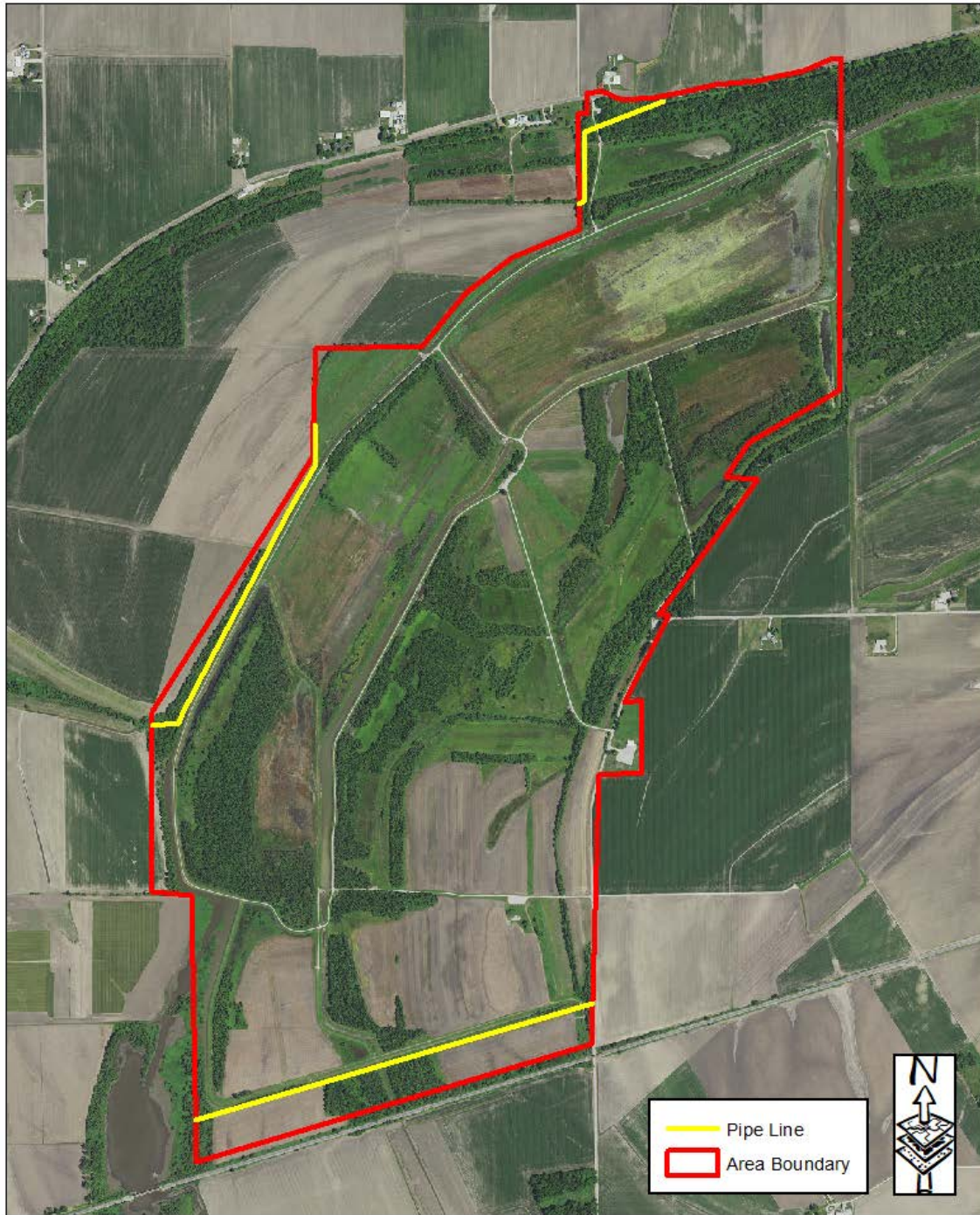


Figure 5: Easement Map

Marais Temps Clair Conservation Area



**To submit a comment on this document,
click on the following link:**

<https://mdc.mo.gov/node/10013?ap=315820>