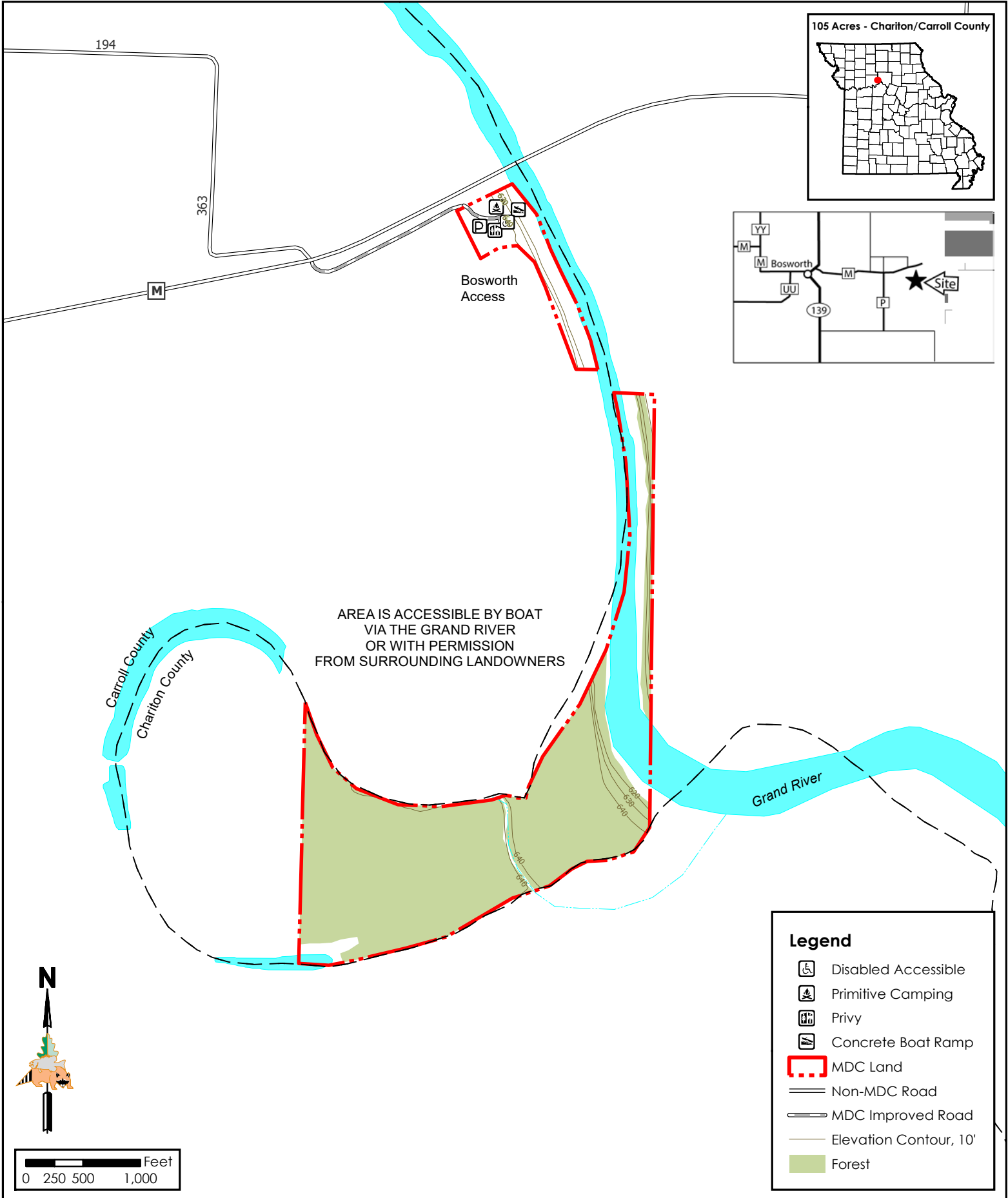




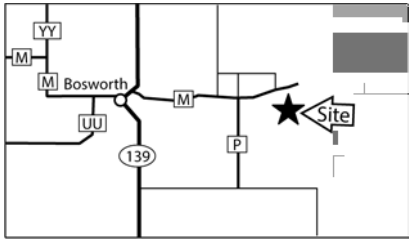
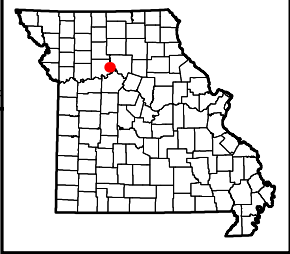
Helen K. Wiese Conservation Area

Conservation Commission of the State of Missouri ©

Last Updated - 8/30/2021



105 Acres - Chariton/Carroll County



AREA IS ACCESSIBLE BY BOAT
VIA THE GRAND RIVER
OR WITH PERMISSION
FROM SURROUNDING LANDOWNERS

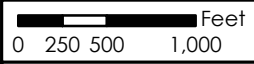
Grand River

Carroll County
Chariton County

Bosworth
Access

Legend

- Disabled Accessible
- Primitive Camping
- Privy
- Concrete Boat Ramp
- MDC Land
- Non-MDC Road
- MDC Improved Road
- Elevation Contour, 10'
- Forest



MAP DISCLAIMER: Although all data in this map have been compiled by the Missouri Department of Conservation, no warranty, expressed or implied, is made by the department as to the accuracy of the data and related materials. The act of distribution shall not constitute any such warranty, and no responsibility is assumed by the department in the use of these data or related materials.