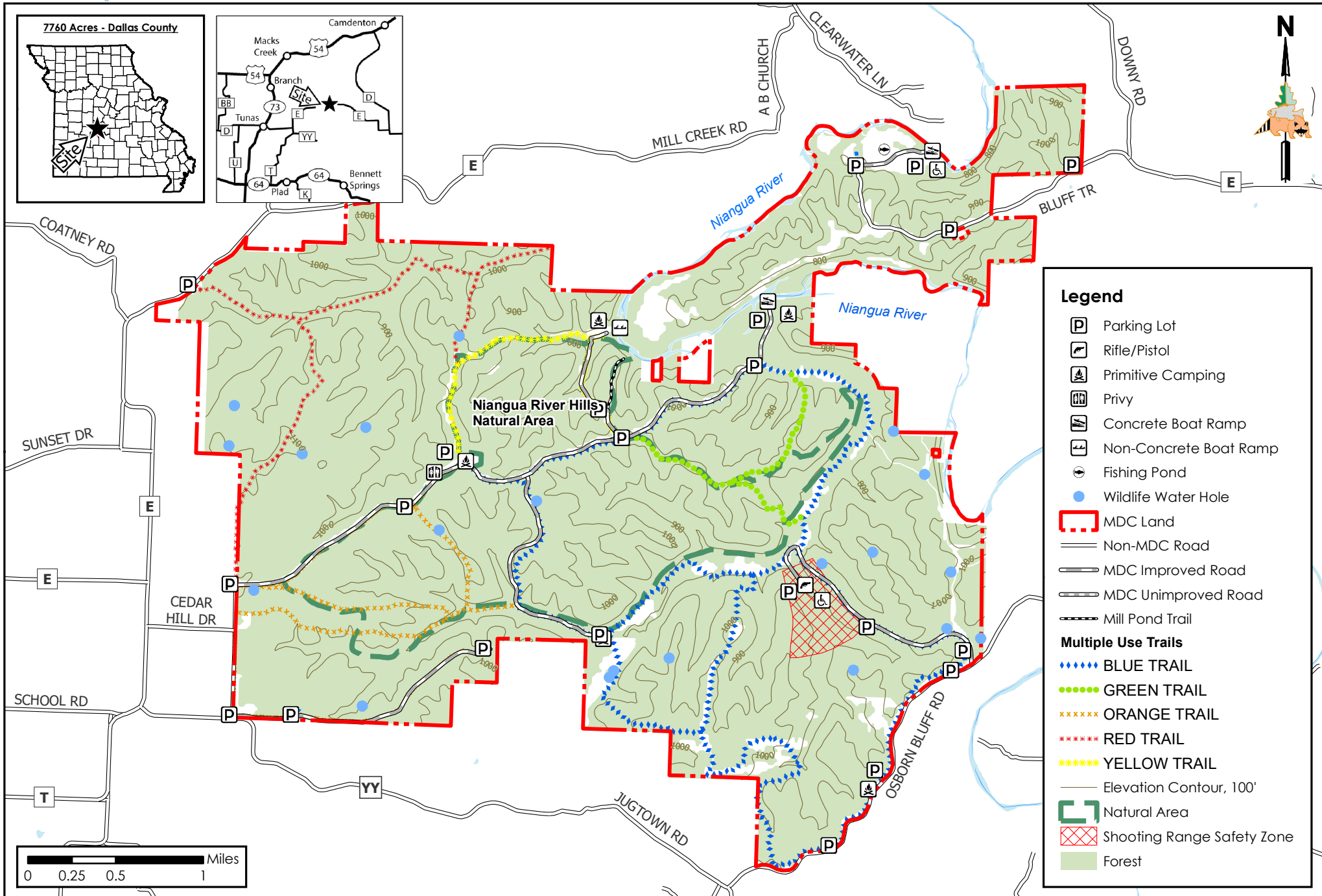
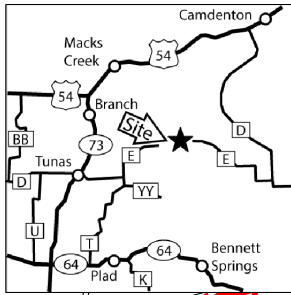
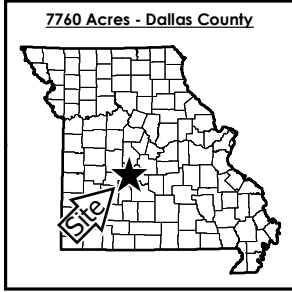




Lead Mine Conservation Area

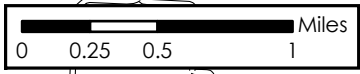
Conservation Commission of the State of Missouri ©

Last Updated - 7/21/2023



Legend

- Parking Lot
- Rifle/Pistol
- Primitive Camping
- Privy
- Concrete Boat Ramp
- Non-Concrete Boat Ramp
- Fishing Pond
- Wildlife Water Hole
- MDC Land
- Non-MDC Road
- MDC Improved Road
- MDC Unimproved Road
- Mill Pond Trail
- Multiple Use Trails**
- BLUE TRAIL
- GREEN TRAIL
- ORANGE TRAIL
- RED TRAIL
- YELLOW TRAIL
- Elevation Contour, 100'
- Natural Area
- Shooting Range Safety Zone
- Forest



MAP DISCLAIMER: Although all data in this map have been compiled by the Missouri Department of Conservation, no warranty, expressed or implied, is made by the department as to the accuracy of the data and related materials. The act of distribution shall not constitute any such warranty, and no responsibility is assumed by the department in the use of these data or related materials.