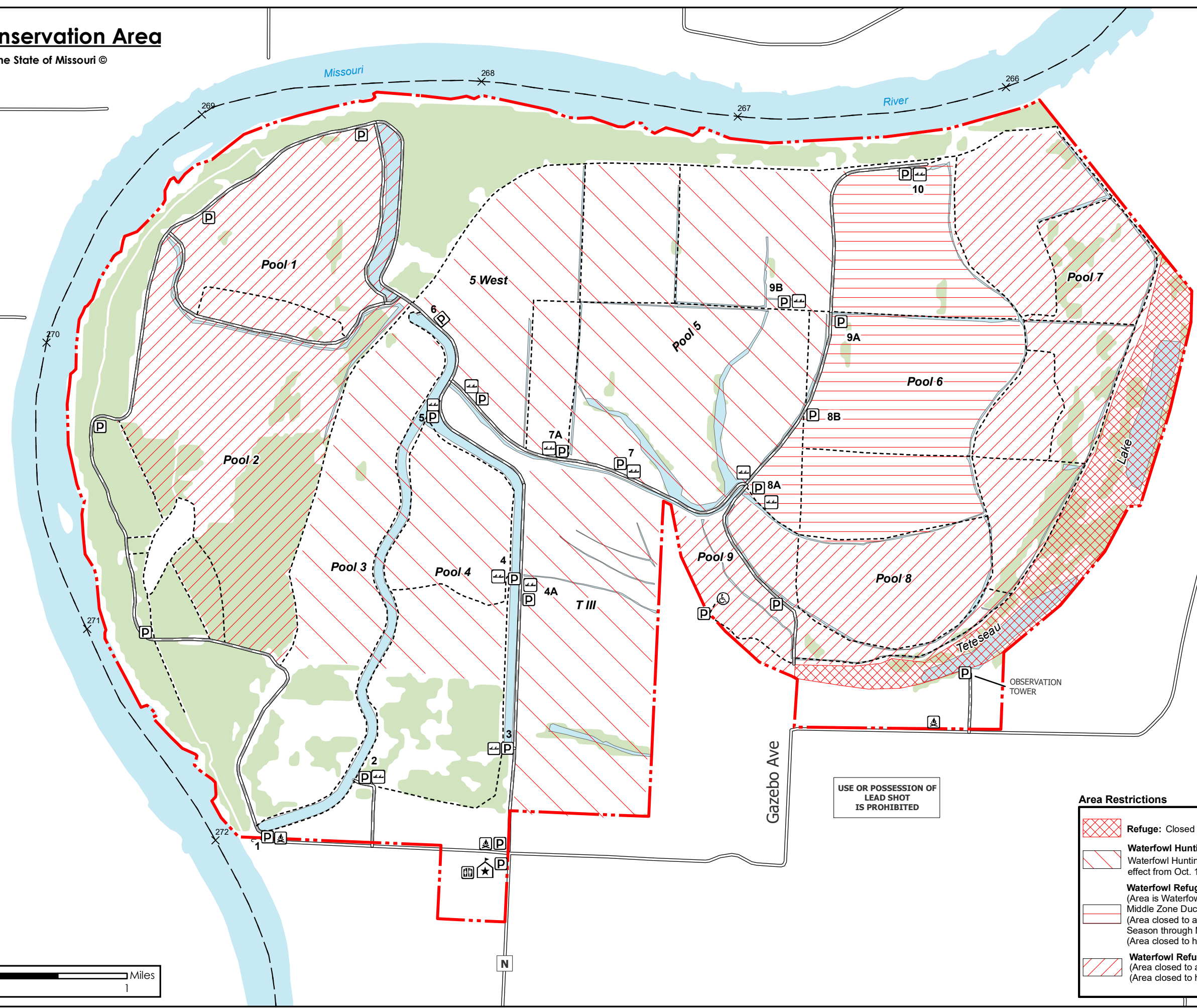
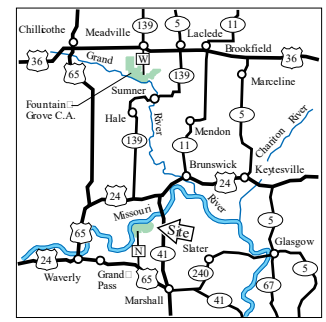
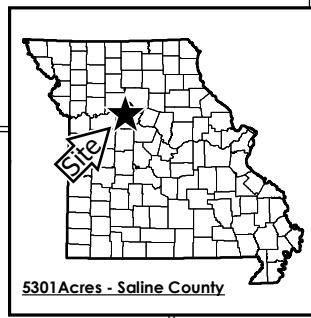


Grand Pass Conservation Area

Conservation Commission of the State of Missouri ©
Last Updated - 5/3/2023



Legend

- Area Office
- Parking Lot
- Primitive Camping
- Privy
- Non-Concrete Boat Ramp
- Disabled Accessible Blind
- MDC Land
- MDC Improved Road
- MDC Unimproved Road
- MDC Service Road
- Deep Water
- Forest

Area Restrictions

- Refuge:** Closed to all hunting.
- Waterfowl Hunting Only Zone:** Waterfowl Hunting Only Zone in effect from Oct. 15 through Feb. 15
- Waterfowl Refuge:** (Area is Waterfowl Hunting Only Zone from Oct. 15 through end of Middle Zone Duck Season.) (Area closed to all uses from end of Middle Zone Duck Season through Mar. 1) (Area closed to hunting from Mar. 2 through Mar. 31)
- Waterfowl Refuge:** (Area closed to all uses from Oct. 15 through Mar. 1) (Area closed to hunting from Mar. 2 through Mar. 31)

USE OR POSSESSION OF
LEAD SHOT
IS PROHIBITED

Miles
0 0.5 1

MAP DISCLAIMER: Although all data in this map have been compiled by the Missouri Department of Conservation, no warranty, expressed or implied, is made by the department as to the accuracy of the data and related materials. The act of distribution shall not constitute any such warranty, and no responsibility is assumed by the department in the use of these data or related materials.