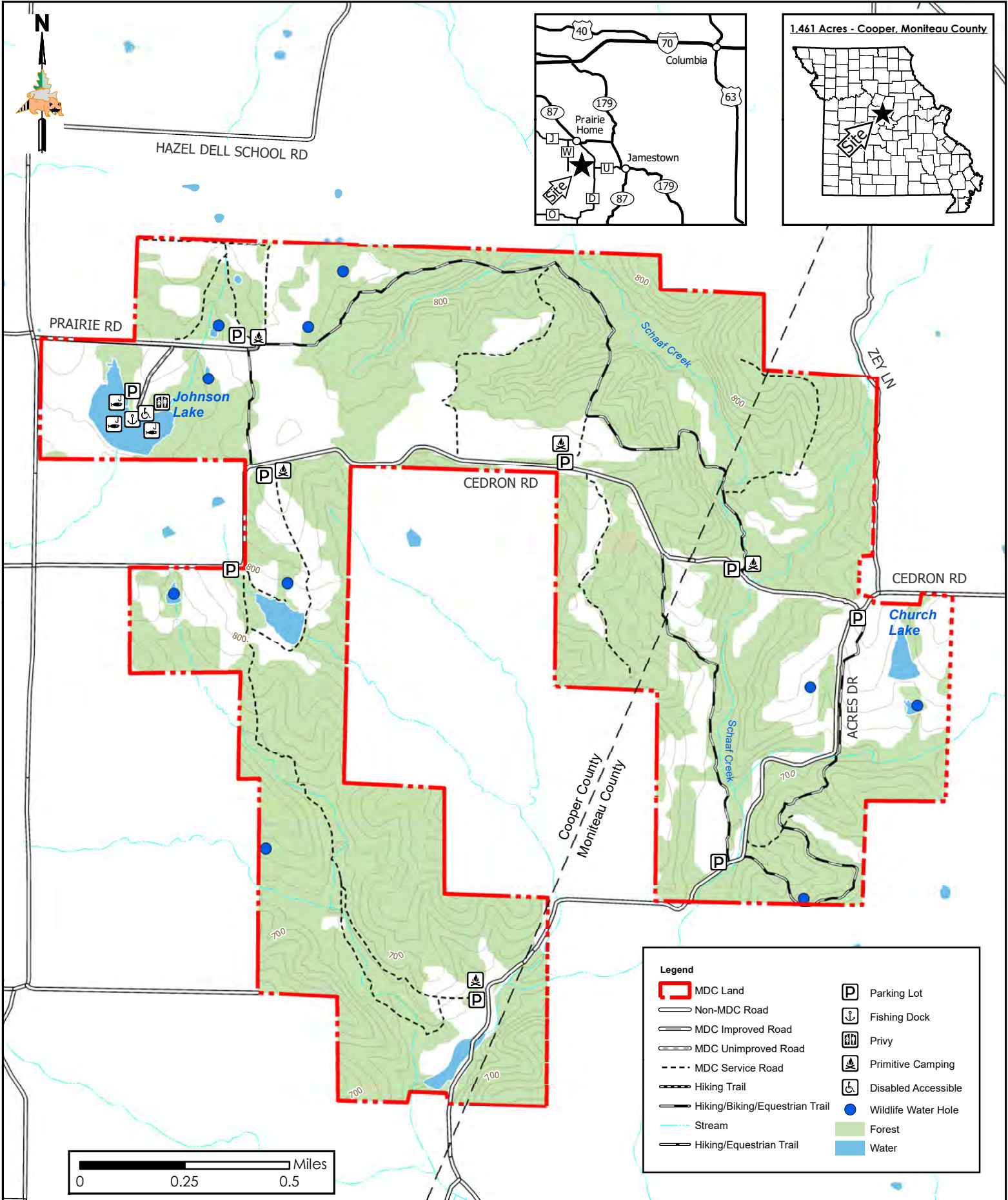




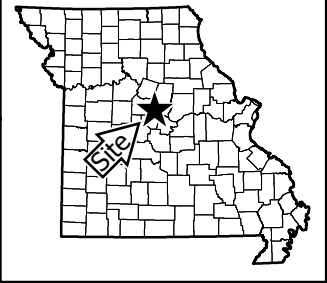
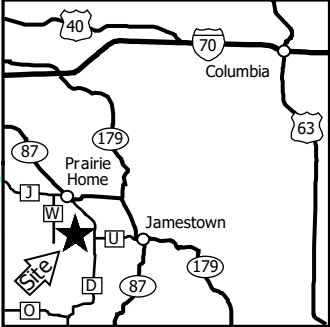
# Prairie Home Conservation Area

Conservation Commission of the State of Missouri ©

Last Updated - 8/23/2022



1,461 Acres - Cooper, Moniteau County



| Legend |                                |  |                     |
|--------|--------------------------------|--|---------------------|
|        | MDC Land                       |  | Parking Lot         |
|        | Non-MDC Road                   |  | Fishing Dock        |
|        | MDC Improved Road              |  | Privy               |
|        | MDC Unimproved Road            |  | Primitive Camping   |
|        | MDC Service Road               |  | Disabled Accessible |
|        | Hiking Trail                   |  | Wildlife Water Hole |
|        | Hiking/Biking/Equestrian Trail |  | Forest              |
|        | Stream                         |  | Water               |
|        | Hiking/Equestrian Trail        |  |                     |

MAP DISCLAIMER: Although all data in this map have been compiled by the Missouri Department of Conservation, no warranty, expressed or implied, is made by the department as to the accuracy of the data and related materials. The act of distribution shall not constitute any such warranty, and no responsibility is assumed by the department in the use of these data or related materials.