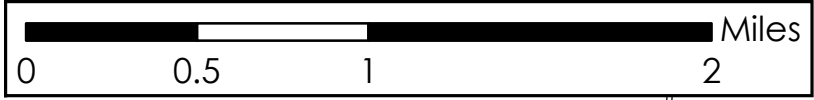
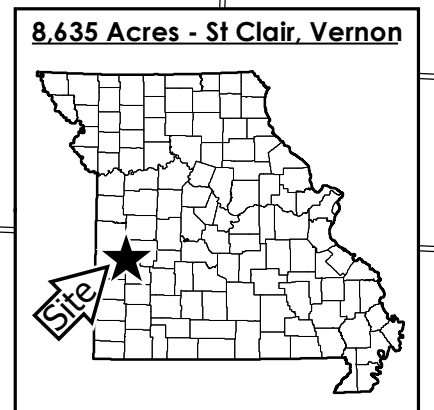
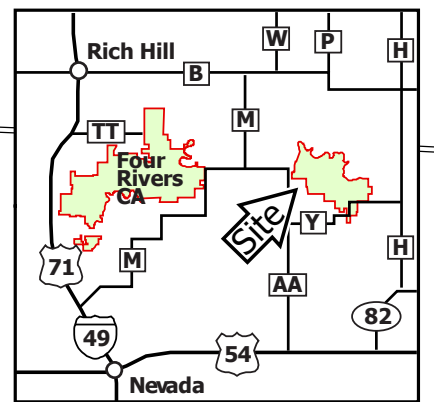
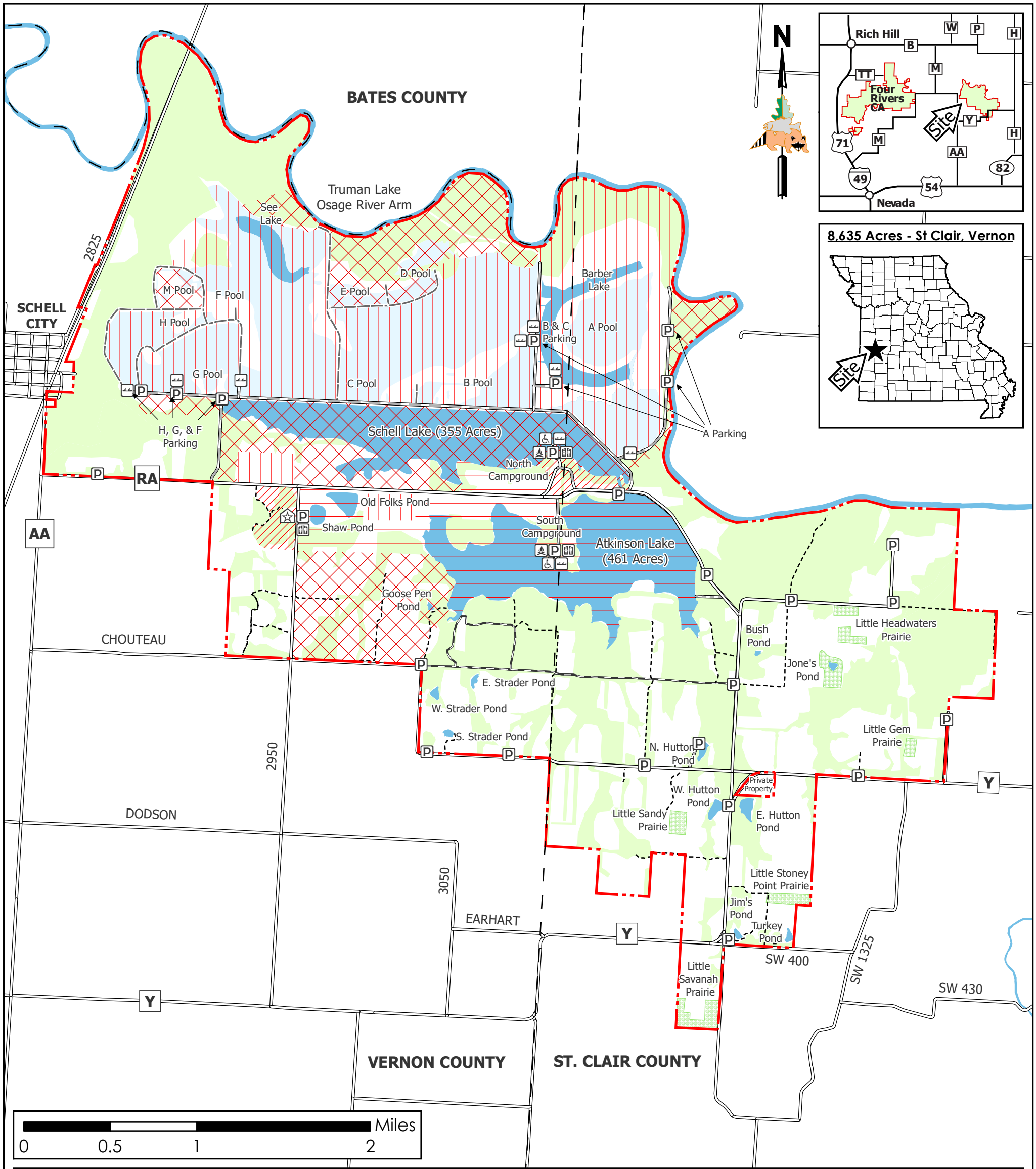




Schell-Osage Conservation Area

Conservation Commission of the State of Missouri ©
Last Updated - 7/14/2022



Legend

Disabled Accessible	Privy	County	Waterfowl Pool	Road
MDC Office	Non-Concrete Boat Ramp	MDC Land	Waterbody	Improved Road
Parking Lot	Disabled Accessible Blind	Prairie	Boat Lane	Unimproved Road
Primitive Camping	Waterfowl Hunting Blind	Forested Area	Levee	Service Road
				Hiking Trail

Area Restrictions

1) Use or possession of lead shot is prohibited.	2) Deer hunting by archery methods only.
3) No Hunting With Firearms (Jan. 1 - Dec. 31)	4) Waterfowl Refuge (Closed to all use Oct. 15- Mar. 1)
5) Waterfowl Hunting Only (Oct. 15th - Feb. 15)	6) Wildlife Refuge (Closed to all use Oct. 15 - Mar. 1) (Closed to hunting Mar. 2 - Oct. 14)

MAP DISCLAIMER: Although all data in this map have been compiled by the Missouri Department of Conservation, no warranty, expressed or implied, is made by the department as to the accuracy of the data and related materials. The act of distribution shall not constitute any such warranty, and no responsibility is assumed by the department in the use of these data or related materials.