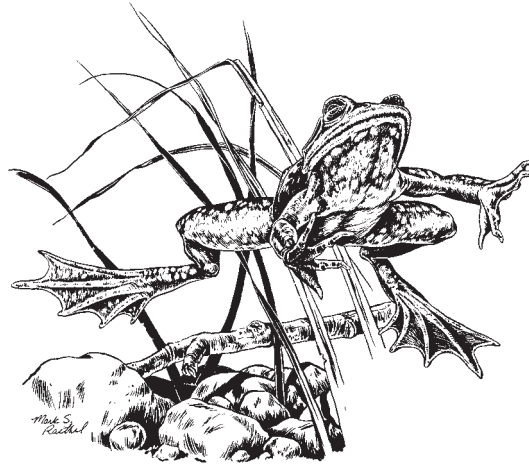


## Hunting

- Deer and turkey regulations are subject to annual changes. Refer to Spring Turkey or Fall Deer and Turkey booklets for current regulations.
- Hunting may be restricted on designated portions of the area, including in the vicinity of shooting ranges, residences, work areas and campgrounds. The following special regulations also apply.
- Seasonal refuge is closed to all public use from October 15 to March 1.
- Non-toxic shot is required for all hunting with a shotgun on this area. Possession of lead shot is prohibited.
- Decoys and blinds are permitted but must be removed from the area daily and may not be left unattended between the hours of 10:00 p.m. and 4:00 a.m. Blinds may not be constructed on-site from woody vegetation except for willows.
- Trapping of furbearers is allowed only with a special use permit.
- Only portable tree stands are allowed and only from September 1 through January 31 on areas where deer hunting is allowed, by special use permit, or except as otherwise authorized in the Spring Turkey or Fall Deer and Turkey booklet. Unattended stands must be plainly labeled on a durable material with the full name and address, or Conservation Number, of the owner and be removed from the area before February 1. Use of nails, screw-in steps, and any material or method that would damage the tree is prohibited.



### Nearby Department Areas:

W. R. Kern Memorial C. A.  
Friendly Prairie C. A.  
Grandfather Prairie C. A.  
Hazel Hill C. A.

### For local information, contact:

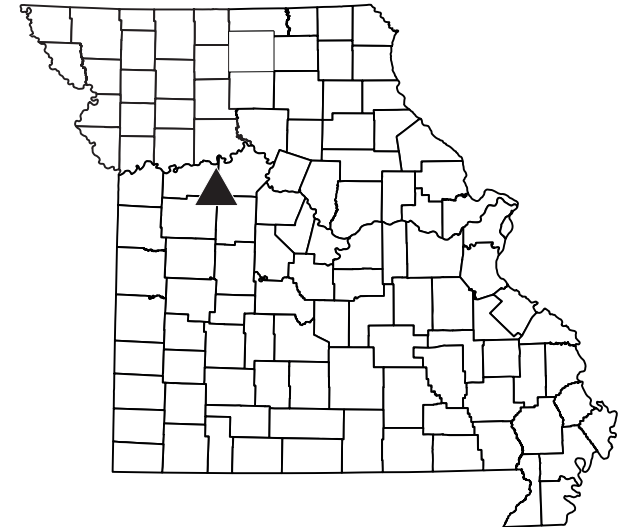
Department of Conservation  
2000 S. Limit  
Sedalia, MO 65301  
660-530-5500

Your comments and suggestions regarding area facilities and management are welcome.

3/2022

(Regulations are from the Wildlife Code of Missouri and selected statutes of the State of Missouri. Special area regulations are in Chapter 11 of the Wildlife Code. A free printed copy of the Wildlife Code, which lists most area regulations, is available from the Conservation Department. Chapter 11 in its entirety is available at [www.sos.mo.gov/adrules/csr/current/5csr/3csr.asp](http://www.sos.mo.gov/adrules/csr/current/5csr/3csr.asp).) Equal opportunity to participate in and benefit from programs of the Missouri Department of Conservation is available to all individuals without regard to their race, color, national origin, sex, age or disability. Questions should be directed to the Department of Conservation, P.O. Box 180, Jefferson City, MO 65102, (573) 751-4115 (voice) or 800-735-2966 (TTY), or to the U.S. Fish and Wildlife Service Division of Federal Assistance, 4401 N. Fairfax Drive, Mail Stop: MBSP-4020, Arlington, VA 22203.

# Ralph and Martha Perry Memorial Conservation Area



Serving nature and you™  
MISSOURI DEPARTMENT OF CONSERVATION

# Ralph and Martha Perry Memorial Conservation Area

## About This Area

Ralph and Martha Perry Memorial Conservation Area is in Johnson, Saline and Pettis counties. Unit 1 is in southwestern Saline County, and northeastern Johnson County, with access provided by Highway 23.

The area features a diversity of terrain and habitats, including bottomland crop fields, rolling upland fields, wetlands and woodlands. About seven miles of the Blackwater River flows through the area.

The area is named after the late Dr. Ralph Perry and his wife, Martha, who donated both land and money to create the conservation area.

Management of this 4,134 acre area includes haying and controlled burning in open areas to maintain plant diversity, habitat plantings of trees, shrubs and native grasses, cropping where part of the crop is left standing for wildlife food, and wetland management.

Several small ponds and three lakes provide fishing opportunities. The Conservation Department stocks area waters with catfish, bass and bluegill. Fishing access is provided to the Blackwater River at two locations.

This conservation area was acquired in part through the Pittman-Robertson and Dingell-Johnson Sport Fish and Wildlife Restoration Acts. This is a federal aid project funded by your purchases of hunting and fishing equipment and motor boat fuels. Both programs are administered by the U.S. Fish and Wildlife Service.

## Recreational Opportunities

Bird Watching - Fishing - Hunting - Wildlife Viewing - Outdoor Photography-Picnicking - Frogging - Primitive Camping at Designated Sites

## Rules and Regulations

*Conservation areas are closed from 10 p.m. to 4 a.m. except for authorized camping, fishing, and hunting activities.*

- No littering.
- No fireworks.
- No open fires.
- No ATV's
- No free-running pets. Dogs must be leashed or confined when not used for hunting or training.
- Destroying, cutting or removing vegetation is prohibited. Nuts, berries, fruits, edible wild greens and mushrooms may be taken only for personal consumption.
- Motor vehicles are restricted to roadways and parking areas. Blackwater Road from the parking lot to the river access is closed from Oct. 15 to the close of the waterfowl season.
- Bicycles allowed on designated service roads year-round. Service roads can be located at <https://mdc.mo.gov/discover-nature/places>.
- Horseback riding is permitted only on roads open to vehicles.
- Camping is allowed within 50 yards of parking lots "A", "B", "C", "D" and "E" only. See map for locations. Camping on other parts of the area may be allowed by special use permit only.
- Camping is limited to 14 consecutive days in a 30-day period. All camping equipment, including vehicles, must be removed from the area at the end of the 14-day period. Groups of 10 campers or more must obtain a special-use permit.
- A target shooting range open to the public provides shooting benches and target supports for 25-, 50- and 100-yard shooting of both rifles and handguns. From Oct. 1 through Dec. 31, the shooting range is closed until 12 p.m. each day.
  - Target shooting is not permitted anywhere else on the area.
  - Shotguns are prohibited on the shooting range.
  - No collecting artifacts or any other activity that damages or disturbs historical or archeological features.
  - Trail and game cameras are prohibited.

## Fishing and Boating

*Fishing and frogging are permitted under statewide regulations with the following exceptions on impoundments:*

- Daily limits are six black bass, four catfish in the aggregate (channel, blue and flathead catfish), and 30 crappie. All other species fall under statewide limits, but are not to exceed 20 in the aggregate. All black bass between 12 and 15 inches in total length must be returned to the water unharmed immediately after being caught.
- Other posted restrictions may apply to specific ponds, lakes and stream segments.
- Seining or trapping live bait, including tadpoles, is prohibited on all lakes and ponds, excepted as otherwise provided in this chapter.
- Boats, including sailboats, may be used on lakes and ponds designated as open to boats. Boats may not be left unattended overnight.
- Electric motors only are allowed on area ponds and lakes. No motor limits apply on streams. On area wetlands, outboard motors may be used; however, motors over 10 horsepower must be operated at a slow, no wake speed.

