



Nearby Department Areas
Ralph & Martha Perry Memorial Conservation Area
Blind Pony Lake Conservation Area
Grand Pass Conservation Area
Blue Lick Conservation Area

For local information, contact:

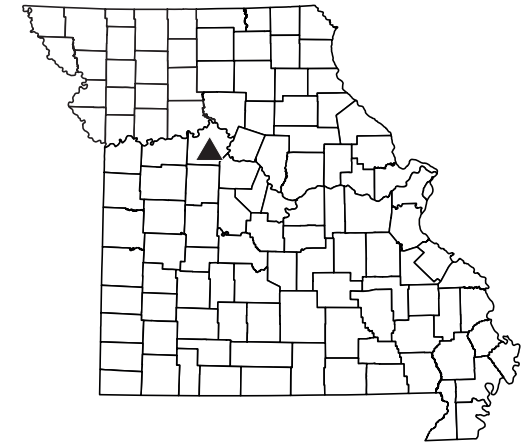
Missouri Department of Conservation
Central Regional Office
3500 E Gans Rd
Columbia, MO 65201
(573) 815-7900

Visit us at:
mdc.mo.gov

*Additional area information is posted on our website
and on bulletin boards located in parking areas and
area office*

Marshall Junction

CONSERVATION AREA



Hunting and Trapping

Hunting is allowed under statewide regulations with the following exceptions.

- Deer and turkey regulations are subject to annual changes. Please refer to Spring Turkey or Fall Deer and Turkey booklets for current regulations.
- Trapping allowed only with a special use permit. Visit our website for more information.
- Only portable stands are allowed from September 1 through January 31. Unattended stands must be plainly labeled on durable material with the full name and address or Conservation number of the owner and be removed from the area by February 1st. Use of nails, screw-in steps, and any material or method that would damage the tree is prohibited.
- Trail and game cameras are prohibited.

12/2021

(Regulations are from the Wildlife Code of Missouri and selected statutes of the State of Missouri. Special area regulations are in Chapter 11 of the Wildlife Code. A free printed copy of the Wildlife Code, which lists most area regulations, is available from the Conservation Department. Chapter 11 in its entirety is available at www.sos.mo.gov/adrules/csr/current/3csr/3csr.asp.) Equal opportunity to participate in and benefit from programs of the Missouri Department of Conservation is available to all individuals without regard to their race, color, national origin, sex, age or disability. Questions should be directed to the Department of Conservation, P.O. Box 180, Jefferson City, MO 65102, (573) 751-4115 (voice) or 800-735-2966 (TTY), or to the U.S. Fish and Wildlife Service Division of Federal Assistance, 4401 N. Fairfax Drive, Mail Stop: MBSP-4020, Arlington, VA 22203.



MISSOURI DEPARTMENT OF CONSERVATION

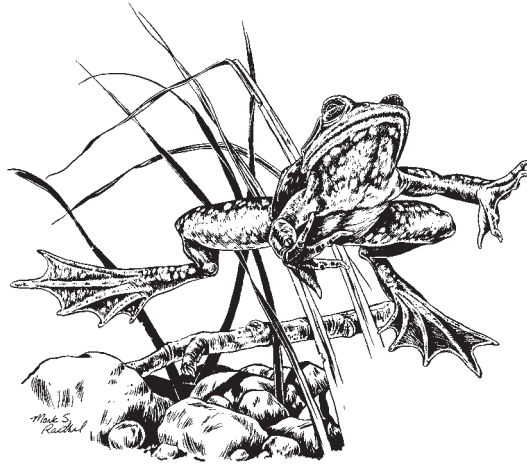
About This Area

This area is approximately 2 miles south and 3 miles west of the I-70/Highway 65 intersection. Go 2 miles south of I-70 on Highway 65, then go 3 miles west on Route CC. From CC, go 1 mile north on State Route RB.

The Conservation Department purchased this 774-acre area in 1964. The area has rolling uplands with mixed old fields and crop fields bordered by timber on more rugged terrain and deep drainages. About 1.25 miles of the Blackwater River runs along the area's northwest boundary, and several fishless ponds are on the area. Management of the area includes periodic prescribed burning and mowing and/or discing in old field areas to maintain open lands important to wildlife. Harvest is planned in various stands of timber to provide a variety of age classes of woodland for game and non-game wildlife benefits. Woodland borders are being feathered to provide habitat for edge and early succession species such as bobwhite quail and cottontail rabbits. Cropland is farmed, and a part of the crop is left standing to provide food for wildlife. Marshall Junction Conservation Area is named for nearby historic crossroads. According to local history, the area was noted for an old rock dam built across the Blackwater to form a swimming and fishing hole, and nearby mineral-rich Abell Spring was reputed to have miracle curing powers. This area was acquired in part through the Pittman-Robertson Wildlife Restoration Act administered by the U.S. Fish and Wildlife Service. Development funds were made available in part through Land and Water Conservation Fund.

Recreational Opportunities

*Bird Watching – Hiking – Hunting
Outdoor Photography – Wildlife Viewing*

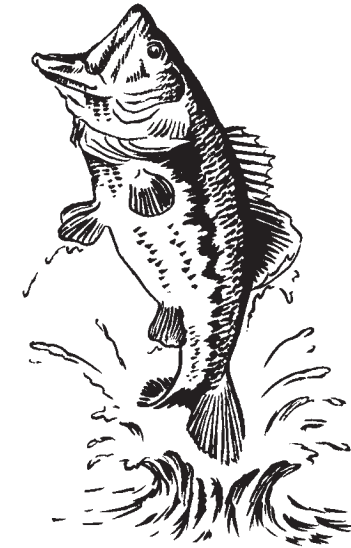


Rules and Regulations

Open for public use from 4:00 a.m. to 10:00 p.m.;
hunting, fishing, trapping, camping, dog training,
launching and landing boats allowed 24 hours a day
on areas where these activities are permitted.

- Groups of more than 10 and some special activities may require a special use permit. Please visit our website for more information.
- Unstaffed ranges. Hooting hours one-half (1/2) hour before sunrise to one-half (1/2) hour after sunset. Use shall be in accordance with posted rules or directed on special use permit. Department reserves the right to inspect permits, firearms, and ammunition. Only paper targets attached to provided target holders may be used. Alcoholic beverages are prohibited on all ranges and associated parking lots.
- Camping is permitted only by special use permit. Please visit our website for more information.
- Bicycles allowed on designated service roads year-round. Service roads can be located at <https://mdc.mo.gov/discover-nature/places>
- Bicycles and horses allowed on public roadways year-round.

- Vehicles are restricted to public roadways and parking lots unless otherwise allowed by area regulations.
- Nuts, berries, fruits, edible wild greens and mushrooms may be taken only for personal use.
- Digging roots is prohibited.
- Pets and hunting dogs are permitted but must be on a leash or confined at all time. Hunting dogs may be used off the leash and unconfined for hunting and training purposes. A hunting permit is required to train dogs in pursuit of wildlife.



Fishing and Boating

Fishing and frogging are allowed under statewide regulations with the following exceptions.

- Seining or trapping live bait, including tadpoles, is prohibited in lakes and ponds.
- For more information on fishing creeks and streams, refer to A Summary of Missouri Fishing Regulations.