

## Hunting and Trapping

*Hunting is allowed under statewide regulations with the following exceptions.*

- Deer and turkey regulations are subject to annual changes. Please refer to Spring Turkey or Fall Deer and Turkey Booklets for current regulations.
- Trapping allowed only with a special use permit. Visit our website for more information.
- Only portable stands are allowed from September 1 through January 31. Unattended stands must be plainly labeled or on durable material with the full name and address or Conservation number of the owner and be removed from the area by February 1st. Use of nails, screw-in steps, and any material or method that would damage the tree is prohibited.
- Trail and game cameras are prohibited.



### For local information, contact:

Missouri Department of Conservation  
1315 E Main  
Linn, MO 65051  
(573) 897-3797

OR

Missouri Department of Conservation  
Central Regional Office  
3500 E Gans Road  
Columbia, MO 65201  
(573) 815-7900

Visit us at:  
[www.mdc.mo.gov](http://www.mdc.mo.gov)

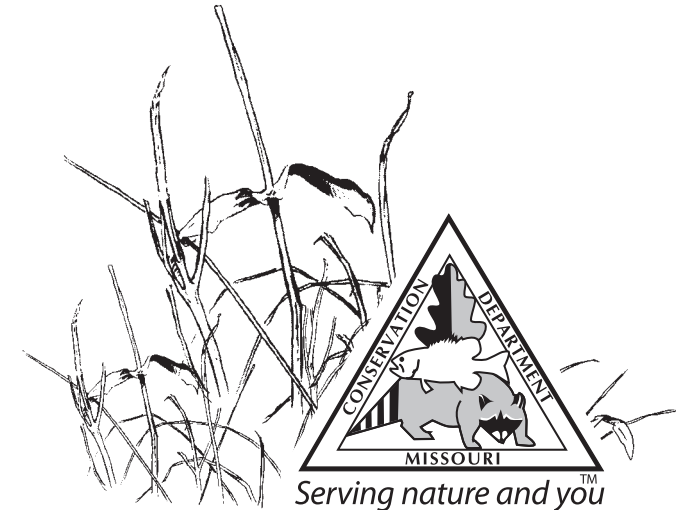
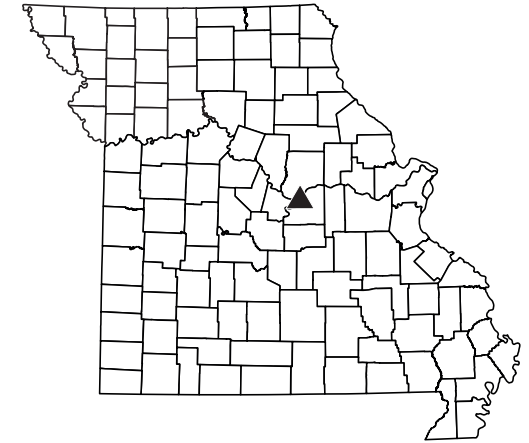
*Additional area information is posted on our website and on bulletin boards located in parking areas and area offices.*

12/2021

(Regulations are from the Wildlife Code of Missouri and selected statutes of the State of Missouri. Special area regulations are in Chapter 11 of the Wildlife Code. A free printed copy of the Wildlife Code, which lists most area regulations, is available from the Conservation Department. Chapter 11 in its entirety is available at [www.sos.mo.gov/adrules/csr/current/3csr/3csr.asp](http://www.sos.mo.gov/adrules/csr/current/3csr/3csr.asp).) Equal opportunity to participate in and benefit from programs of the Missouri Department of Conservation is available to all individuals without regard to their race, color, national origin, sex, age or disability. Questions should be directed to the Department of Conservation, P.O. Box 180, Jefferson City, MO 65102, (573) 751-4115 (voice) or 800-735-2966 (TTY), or to the U.S. Fish and Wildlife Service Division of Federal Assistance, 4401 N. Fairfax Drive, Mail Stop: MBSP-4020, Arlington, VA 22203.

# Painted Rock

## CONSERVATION AREA



MISSOURI DEPARTMENT OF CONSERVATION

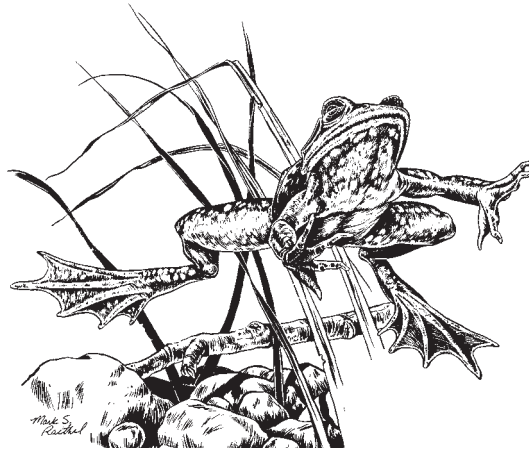
## About this Area

Painted Rock Conservation Area is located on Highway 133, seven miles west of Westphalia in Osage County. The lands of Painted Rock Conservation Area show evidence of occupation by Native Americans as early as 9,000 years ago. An Indian burial cairn, located along Osage Scenic Bluff trail, was constructed between 500 and 1,500 years ago. The property was purchased in 1877 by a group of Jefferson City dignitaries, who named it the Painted Rock Country Club. Their successors sold the property in 1946. The Department of Conservation purchased the property from a private individual in 1981. Painted Rock Conservation Area consists of 1,480 acres. The Osage River intersects the property. The forest contains six ponds, which are managed primarily for wildlife, and Clubhouse Lake. The forest consists primarily of oak and hickory, with the areas along the Osage River dominated by bottomland hardwoods. Several small glades can be found in the forest. Timber harvesting is managed to improve wildlife habitat, and 60 acres of open land serve as wildlife food plots on a crop rotation basis. This Conservation Area was acquired in part through the Pittman-Robertson Wildlife Restoration Act administered by the U.S. Fish and wildlife Service.



## Recreational Opportunities

Bird Watching – Fishing – Hiking – Hunting –  
Outdoor Photography – Wildlife Viewing



## Rules and Regulations

*Open for public use from 4:00 a.m. to 10:00 p.m.;  
hunting fishing, trapping, camping, dog training,  
launching and landing boats allowed 24 hours a day  
on areas where these activities are permitted.*

- Groups of more than 10 people and some special activities may require a special use permit. Please visit our website for more information.
- Camping is allowed anytime in designated camping areas as well as by walk-in/backpack camping. No amenities are provided. Seasonal closures and restrictions may apply. Groups of more than 10 campers require a special use permit. Campers are limited to 14 consecutive days in a 30-day period.
- Foot traffic welcome on designated hiking trail.
- Bicycles allowed on designated service roads year-round. Service roads can be located at <https://mdc.mo.gov/discover-nature/places>
- Vehicles are restricted to public roadways and parking lots unless otherwise allowed by area regulations.
- Nuts, berries, fruits, edible wild greens and mushrooms may be taken for personal use.

- Digging roots is prohibited.
- Pets and hunting dogs are permitted but must be on a leash or confined at all time. Hunting dogs may used off the leash and unconfined for hunting and training purposes. A hunting permit is required to train dogs in pursuit of wildlife.
- Target shooting is prohibited.

## Fishing and Boating

*Fishing and frogging are allowed under statewide regulations.*

- Seining or trapping live bait is permitted in streams.
- Seining or trapping live bait, including tadpoles, is prohibited in lakes and ponds.
- Boats, including sailboats, may be used on lakes and ponds designated as open to boats. Boats may not be left unattended overnight.
- Only electric motors are permitted on lakes and ponds of less than 70 acres.
- For more information on fishing creeks and streams, refer to A Summary of Missouri Fishing Regulations.

