

Hunting and Trapping

Hunting is allowed under statewide regulations with the following exceptions.

- Deer and turkey regulations are subject to annual changes. Please refer to Spring Turkey or Fall Deer and Turkey Booklets for current regulations.
- Trapping allowed only with special use permit. Contact area manager.
- Only portable stands are allowed from September 1 through January 31. Unattended stands must be plainly labeled or on durable material with the full name and address or Conservation number of the owner and be removed from the area by February 1st. Use of nails, screw-in steps, and any material or method that would damage the tree is prohibited.
- Trail and game cameras are prohibited.
- Non-toxic shot is required for all hunting with shotguns.



For local information, contact:

Missouri Department of Conservation
3500 E Gans Rd
Columbia, MO 65201
(573) 815-7900

Visit us at:
www.mdc.mo.gov

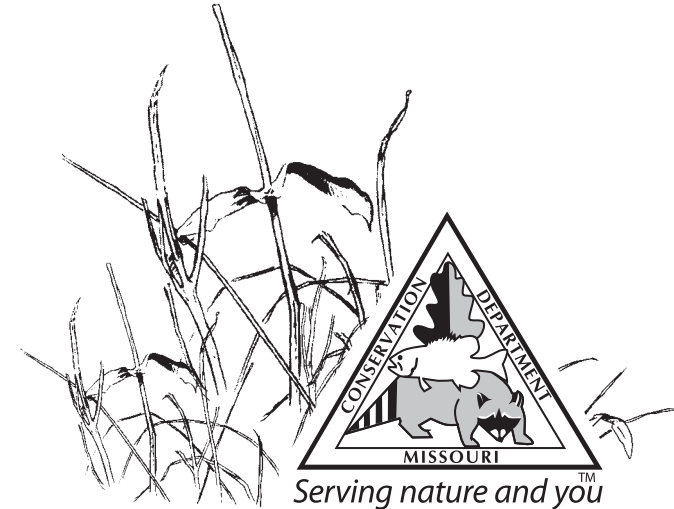
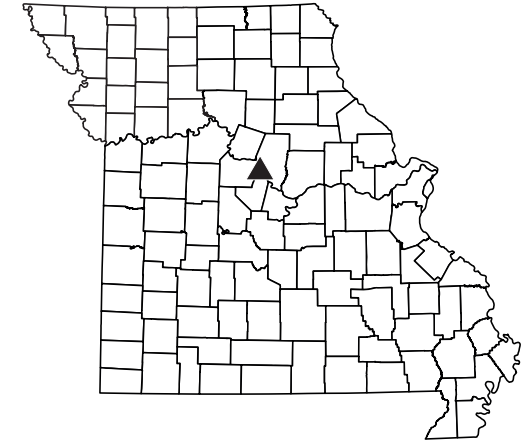
Additional area information is posted on our website and on bulletin boards located in parking areas and area offices.

04/2021

(Regulations are from the Wildlife Code of Missouri and selected statutes of the State of Missouri. Special area regulations are in Chapter 11 of the Wildlife Code. A free printed copy of the Wildlife Code, which lists most area regulations, is available from the Conservation Department. Chapter 11 in its entirety is available at www.sos.mo.gov/adrules/csr/current/3csr/3cvr.asp.) Equal opportunity to participate in and benefit from programs of the Missouri Department of Conservation is available to all individuals without regard to their race, color, national origin, sex, age or disability. Questions should be directed to the Department of Conservation, P.O. Box 180, Jefferson City, MO 65102, (573) 751-4115 (voice) or 800-735-2966 (TTY), or to the U.S. Fish and Wildlife Service Division of Federal Assistance, 4401 N. Fairfax Drive, Mail Stop: MBSP-4020, Arlington, VA 22203.

Plowboy Bend

CONSERVATION AREA



MISSOURI DEPARTMENT OF CONSERVATION



About this Area

Plowboy Bend Conservation Area in Moniteau County is located 5 miles northeast of Jamestown. To reach the area from Hwy 179, take 179 into Jamestown, turn on Hwy Y and proceed 5 miles until the pavement ends. Turn right onto Riverbottom Rd. and follow it across the railroad track into the 2,617-acre area. The Missouri River forms the northern and eastern boundaries of the Area and provides over 6 miles of river frontage. The Area takes its name from the bend in the Missouri River at the north end of the Area, named for the steamboat Plowboy that sunk nearby in the mid 1800's. The site was acquired by the Conservation Department in 1995, bought in part with federal funds provided by the Partnership for Missouri Riverlands; a consortium of state and federal agencies formed after the 1993 flood to negotiate purchase of flood prone land in order to lessen the chance and severity of future floods. The Area contains riparian forests, old fields, successional forests, wetlands, and croplands. There is also an old river slough and forested bluffs in the northwest portion of the area. Management emphasizes bottomland forest creation, reestablishing

mast-producing trees, and managing open lands for wildlife.

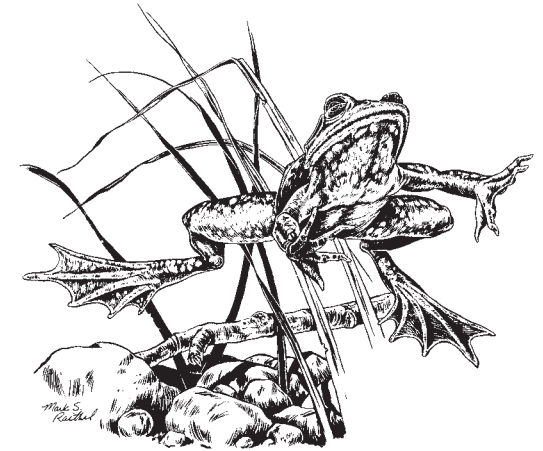
Recreational Opportunities

Bird Watching – Camping – Fishing – Hiking – Hunting – Outdoor Photography – Wildlife Viewing

Rules and Regulations

Open for public use from 4:00 a.m. to 10:00 p.m.; hunting, fishing, trapping, camping, dog training, launching and landing boats allowed 24 hours a day on areas where these activities are permitted.

- Groups of more than 10 people and some special activities may require a special use permit. Please contact area manager for more information.
- Camping is allowed anytime in designated camping areas shown on map. These may or may not have defined campsites. No amenities are provided. Seasonal closures and restrictions may apply. Groups of more than 10 campers require a special use permit. Campers are limited to 14 consecutive days in a 30-day period.
- Camping is allowed by Missouri River boat travelers within 100 yards of the river between April 1 and September 30. Same rules apply.
- Nuts, berries, fruits, edible wild greens and mushrooms may be taken for personal use.
- Digging roots is prohibited.
- No bicycling or horseback riding opportunity except on public roadways.
- Pets and hunting dogs are permitted but must be on a leash or confined at all time. Hunting dogs may be used off the leash and unconfined for hunting and training purposes. A hunting permit is required to train dogs in pursuit of wildlife.
- Vehicles are only permitted on public roadways and in parking lots.
- Target shooting is prohibited.
- Use of fireworks is prohibited.
- Guiding for pay is prohibited.



Fishing and Boating

Fishing and frogging are allowed under statewide regulations with the following exceptions.

- Seining or trapping live bait is permitted in streams. No more than three (3) unlabeled poles may be used; trotlines, throwlines, limb lines, bank lines and jug lines may be used but not more than 33 hooks may be used at any time; hooks on trotlines must be staged two feet apart; hooks and lines must be attended every 24 hours or removed. Unanchored jug lines must be personally attended at all times.
- For more information on fishing creeks and streams, refer to A Summary of Missouri Fishing Regulations.