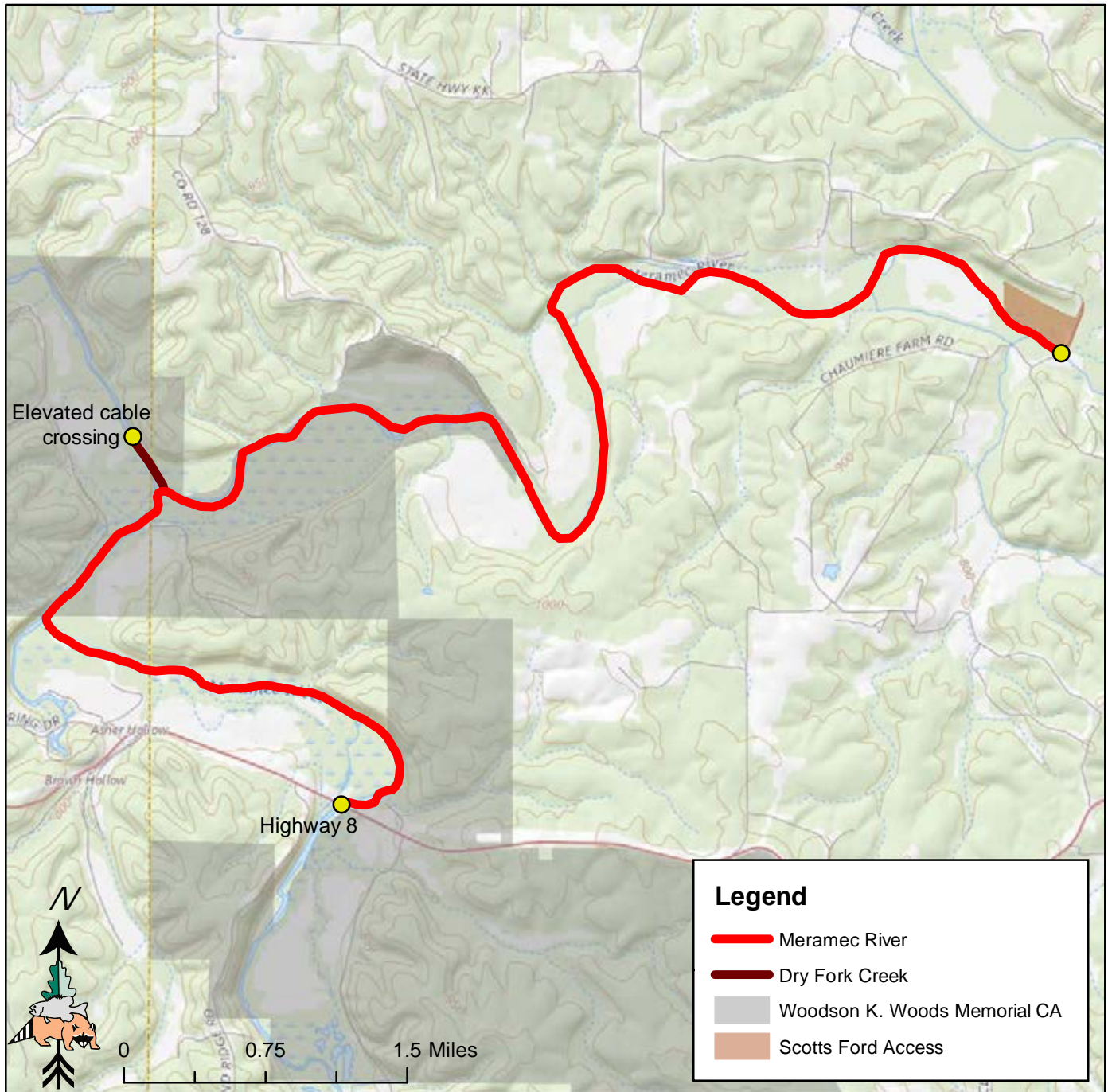


# Meramec River and Dry Fork Creek



## Trout Regulations

- Minimum length limit = 15 inches
- Daily limit = 2
- Authorized lures = Artificial lures and flies

## Location

From Highway 8 bridge to Scott's Ford and in Dry Creek Fork from the elevated cable crossing to confluence with Meramec river



Phelps and Crawford Counties