

PUBLIC NOTICE

**Federal Aid Project MO V-9-D-1
September 1, 2019 – October 31, 2020**

Project Description

Project Name: The Long Shoal Marina Clean Vessel Act Project

Location: Long Shoal Marina is located at mile marker 7 on the north shore of the South Grand River arm of Truman Reservoir in Benton County, Missouri (Figures 1 and 2). The project is located on the U.S. Army Corps of Engineers Long Shoal Marina Recreation Area approximately 1.5 miles northwest of the City of Warsaw off Highway 7 at 12737 Steamboat Rd, Warsaw, MO 65355. The project is in Section 4 of Township 40N, Range 23W (38° 5' 53.46" N; 4° 7' 45.08" E).

Purpose and Need: There is a lack of available pumpout facilities on Truman Reservoir in Benton County in west-central Missouri. The purpose of this grant is to improve the availability of pumpout facilities for recreational boats on Truman Reservoir. The lake is a popular vacation destination with large numbers of boaters spending weekends or longer on the water. Truman Reservoir has five marinas, with the sole pumpout located at Long Shoal Marina. The pumpout at Long Shoal Marina, however, shuts down when the lake levels rise above 719 ft. The project will replace the lift station to a higher elevation to allow the pumpout station and marina to stay open during these high-water events. Convenient and reasonably priced sewage holding tank pumpout facilities are needed to support the recreational boating community on Truman Reservoir. The lake is an economically important recreation area that depends on the water being safe for swimming, skiing and other whole-body contact activities.

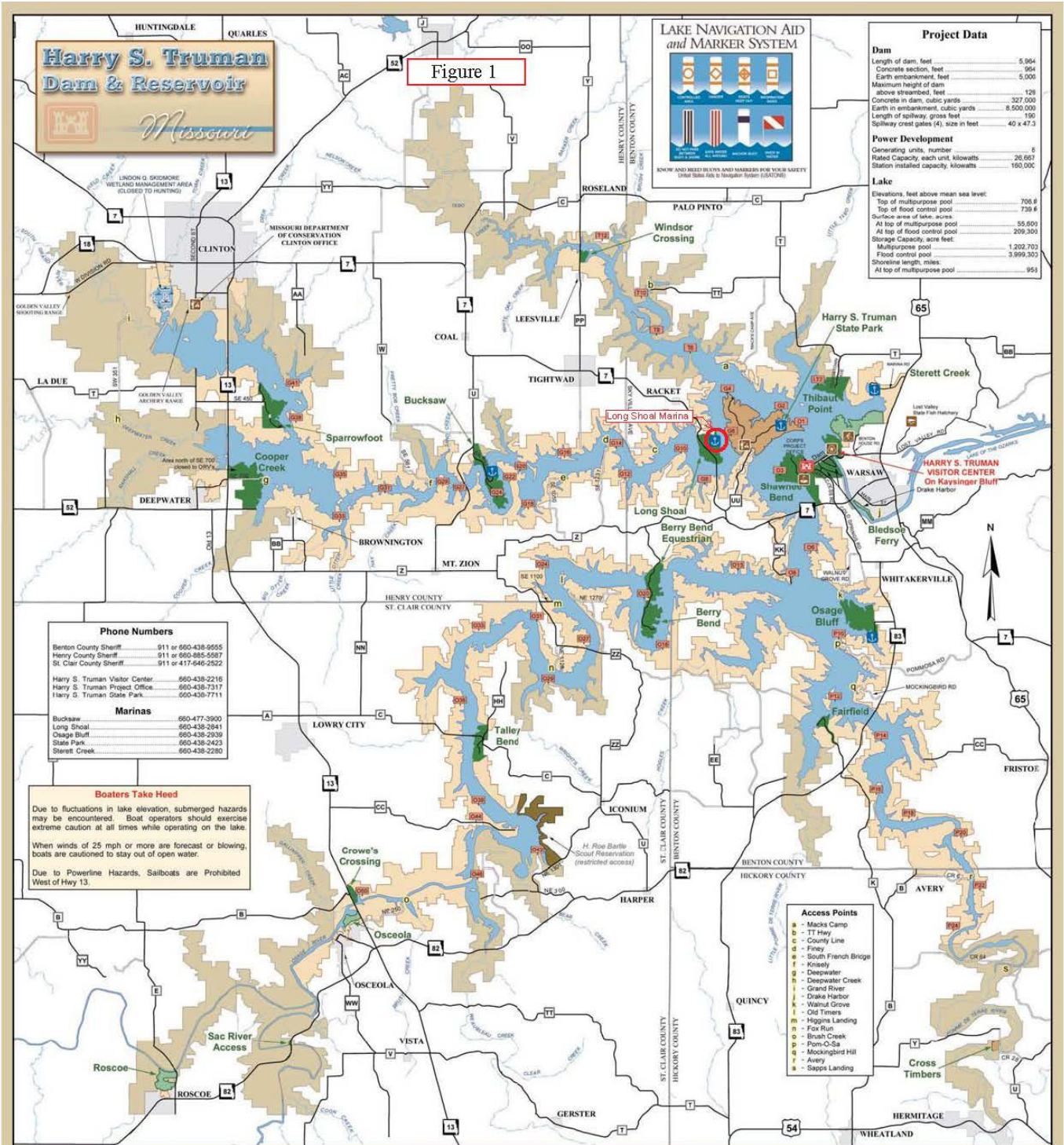
Background: This project will be submitted under the federal aid project *Missouri Clean Vessel Act Pumpout Grant Program* (Project MO V-9-D-1) using Federal Aid in Sport Fish Restoration funds to replace the existing lift station at Long Shoal Marina on the Truman Reservoir. Once approved, the Missouri Department of Conservation plans to enter into a cooperative agreement with Long Shoal Marina for the construction of the new lift station.

Project Scope: The objective of this grant is to replace the existing lift station at Long Shoal Marina with one at a higher elevation that will allow the pumpout station and marina to stay open during high-water events through completion of the following work:

- *Pump Systems* – Two new pump systems will be installed, one to replace the existing system at the holding tank on the main dock and the other will be at the new lift station. At the main dock, two 5.4 HP Flygt pumps and PVC pipe will be replaced. At the new lift station located at an elevation of 727 ft., two new 5.4 HP Flygt pumps, floats and a control panel will be installed.
- *Holding Tank and Sewer Line* – A new underground waste holding tank will be installed at the new lift station. All the associated hardware, plumbing and electrical components will be installed. A new 2-inch sewer line pipe will run between the main dock and new lift station. No tree clearing will be required for installation of the new lift station.

For additional information or to provide comments, please contact:

Laura Ruman
Missouri Department of Conservation
PO Box 180
Jefferson City, MO 65102
Laura.Ruman@mdc.mo.gov
573-522-4115, #3164



Harry S. Truman Dam & Reservoir

Missouri

LAKE NAVIGATION AID and MARKER SYSTEM

KNOW AND REED HELPS AND MARKERS FOR YOUR SAFETY
(USE THE AID & MARKER SYSTEM (SOP) FOR YOUR SAFETY)

Project Data

Dam	
Length of dam, feet	5,964
Concrete section, feet	964
Earth embankment, feet	5,000
Maximum height of dam above streambed, feet	120
Concrete in dam, cubic yards	327,000
Earth in embankment, cubic yards	8,500,000
Length of spillway, gross feet	190
Spillway crest gates (A), size in feet	40 x 47.3
Power Development	
Generating units, number	6
Rated Capacity, each unit, kilowatts	28,667
Station installed capacity, kilowatts	166,000
Lake	
Elevations, feet above mean sea level:	
Top of multipurpose pool	706.6
Top of flood control pool	739.6
Surface area of lake, acres:	
At top of multipurpose pool	55,600
At top of flood control pool	209,300
Storage Capacity, acre feet:	
Multipurpose pool	1,202,700
Flood control pool	3,999,300
Shoreline length, miles:	
At top of multipurpose pool	951

Phone Numbers

Benton County Sheriff	911 or 660-438-9555
Henry County Sheriff	911 or 660-885-5587
St. Clair County Sheriff	911 or 417-646-2522
Harry S. Truman Visitor Center	660-438-2216
Harry S. Truman Project Office	660-438-7317
Harry S. Truman State Park	660-438-7711

Marinas

Bucksaw	660-477-3900
Long Shoal	660-438-2841
Osage Bluff	660-438-2939
State Park	660-438-2423
Sterrett Creek	660-438-2280

Boaters Take Heed

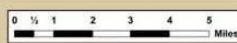
Due to fluctuations in lake elevation, submerged hazards may be encountered. Boat operators should exercise extreme caution at all times while operating on the lake. When winds of 25 mph or more are forecast or blowing, boats are cautioned to stay out of open water. Due to Powerline Hazards, Sailboats are Prohibited West of Hwy 13.

- #### Access Points
- a - Macks Camp
 - b - TT Hwy
 - c - County Line
 - d - Finley
 - e - South French Bridge
 - f - Knisely
 - g - Deepwater
 - h - Deepwater Creek
 - i - Grand River
 - j - Drake Harbor
 - k - Walnut Grove
 - l - Old Timers
 - m - Piggins Landing
 - n - Fox Run
 - o - Brush Creek
 - p - Pom-O-Sa
 - q - Mockingbird Hill
 - r - Avery
 - s - Sappas Landing

RECREATION AREAS	Facilities	Laundry	Restrooms	Drinking Water	Electric Hookup	Shower	Chimney	Firewood	Boat Launch	Electric Camp	RV Hookup	Playground	Swimming	Archery	Bike Trail
Berry Bend	24	•	•	•	•	•	•	•	•	•	•	•	•	•	•
Berry Bend Equestrian	24	•	•	•	•	•	•	•	•	•	•	•	•	•	•
Blossie Ferry	24	•	•	•	•	•	•	•	•	•	•	•	•	•	•
Bucksaw & Marina	24	•	•	•	•	•	•	•	•	•	•	•	•	•	•
City of Clinton	24	•	•	•	•	•	•	•	•	•	•	•	•	•	•
Cooper Creek & Deepwater	24	•	•	•	•	•	•	•	•	•	•	•	•	•	•
Cross Timbers	24	•	•	•	•	•	•	•	•	•	•	•	•	•	•
Crow's Crossing	24	•	•	•	•	•	•	•	•	•	•	•	•	•	•
Fairfax	24	•	•	•	•	•	•	•	•	•	•	•	•	•	•
H.S. Truman State Park	24	•	•	•	•	•	•	•	•	•	•	•	•	•	•
Kaysinger Bluff	24	•	•	•	•	•	•	•	•	•	•	•	•	•	•
Long Shoal & Marina	24	•	•	•	•	•	•	•	•	•	•	•	•	•	•

Legend

- Corps of Engineers Park
- State Park
- City Lease
- Corps of Engineers Public Land
- Missouri Department of Conservation Managed
- Wetland
- Paved road
- Gravel Road
- Corps of Engineers Administration Office
- Corps of Engineers Visitor Center
- State Office
- Golf Course
- Bike Trailhead
- Marina
- Lake Access Point
- Lake Mile Marker



RECREATION AREAS	Facilities	Laundry	Restrooms	Drinking Water	Electric Hookup	Shower	Chimney	Firewood	Boat Launch	Electric Camp	RV Hookup	Playground	Swimming	Archery	Bike Trail
Osage Bluff & Marina	24	•	•	•	•	•	•	•	•	•	•	•	•	•	•
Quincy (City of Quincy)	24	•	•	•	•	•	•	•	•	•	•	•	•	•	•
Roscoe (Village of Roscoe)	24	•	•	•	•	•	•	•	•	•	•	•	•	•	•
Sac River	24	•	•	•	•	•	•	•	•	•	•	•	•	•	•
Sterrett Bend	24	•	•	•	•	•	•	•	•	•	•	•	•	•	•
Springfield	24	•	•	•	•	•	•	•	•	•	•	•	•	•	•
Sterrett Creek (Conservation)	24	•	•	•	•	•	•	•	•	•	•	•	•	•	•
Talley Bend	24	•	•	•	•	•	•	•	•	•	•	•	•	•	•
Thibault Point	24	•	•	•	•	•	•	•	•	•	•	•	•	•	•
Windsor Crossing	24	•	•	•	•	•	•	•	•	•	•	•	•	•	•
Wheatland (City of Warsaw)	24	•	•	•	•	•	•	•	•	•	•	•	•	•	•

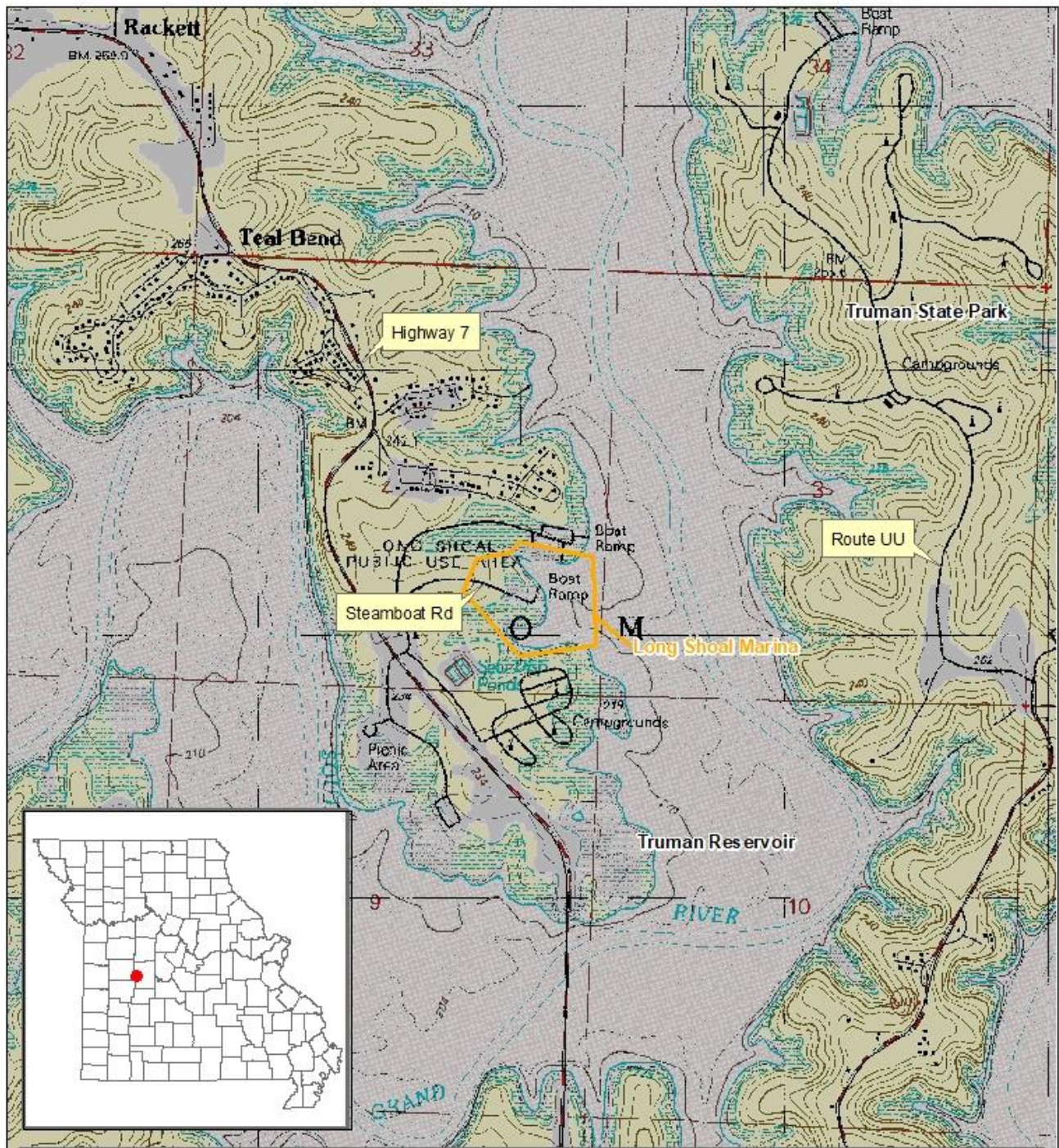
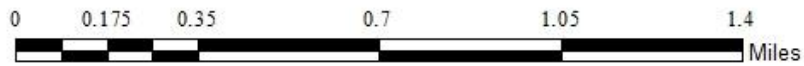


Figure 2. Location of the Long Shoal Marina CVA Project depicted on a USGS topographic map, Benton County, Missouri.



USGS 7.5-minute - Shawnee Bend: T40N, R23W, Section 4.



