

# Missouri Outdoor Recreational Access Program (MRAP) Area Map



**Area Name: Schieber Farm Tract**

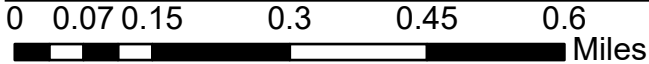
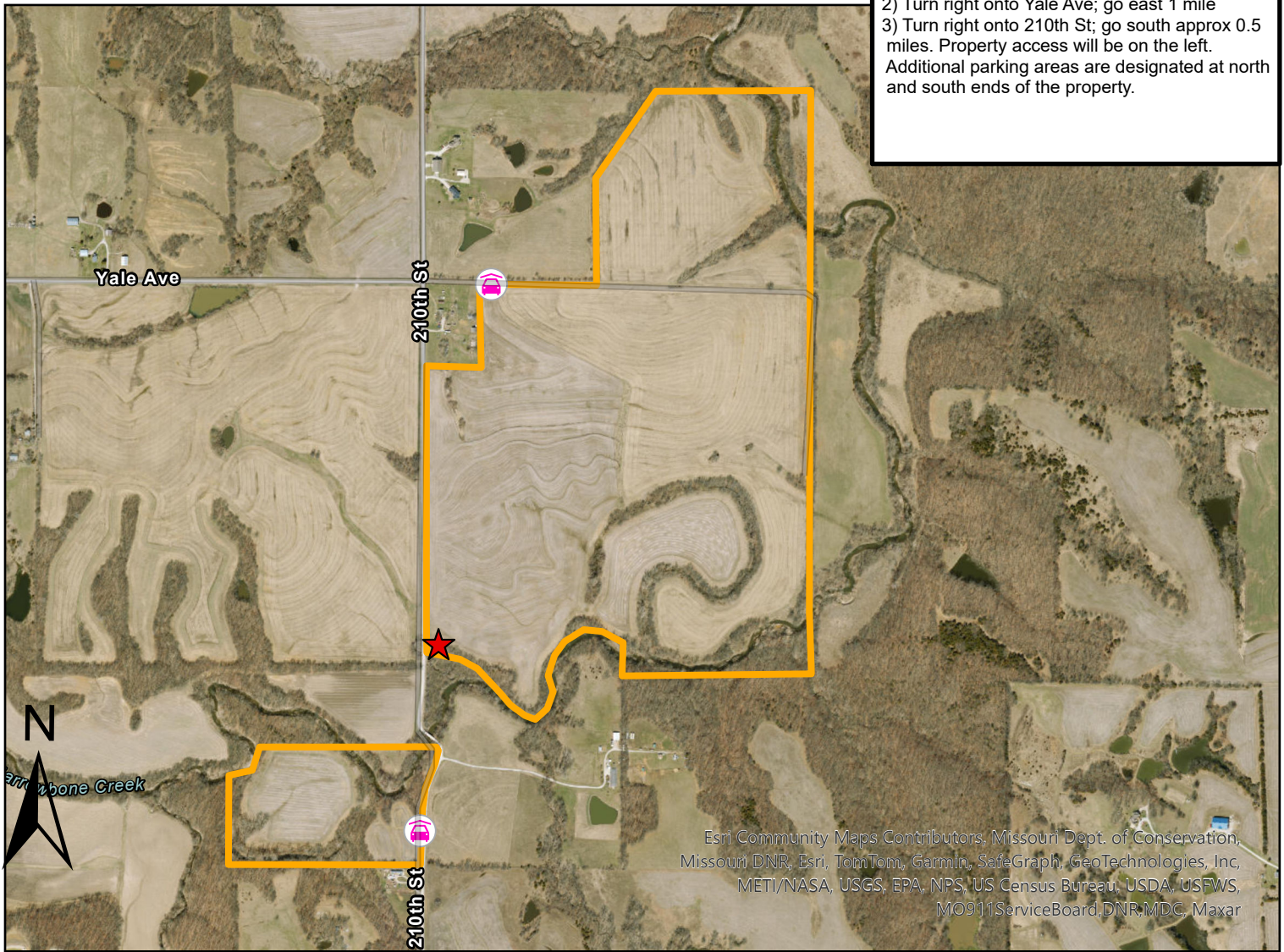
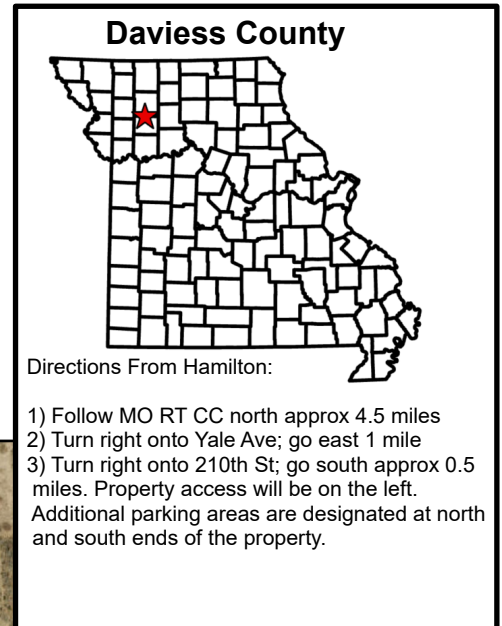
**County: Daviess      Size: 215 acres**

**Township: 58N, Range: 28W, Sections: 35, 36**

**Public Access Type: Small Game and Turkey Hunting**

**The following small game species may be pursued: turkey, rabbits, squirrels, quail, pheasant, rails, snipe, doves, woodcock, frogs and waterfowl**

**Area open 1 hr before sunrise to 1 hr after sunset**



Esri Community Maps Contributors, Missouri Dept. of Conservation, Missouri DNR, Esri, TomTom, Garmin, SafeGraph, GeoTechnologies, Inc, METI/NASA, USGS, EPA, NPS, US Census Bureau, USDA, USFWS, MO911ServiceBoard, DNR, MDC, Maxar

PLEASE RESPECT PRIVATE PROPERTY  
WALK-IN HUNTING ONLY  
ALL OTHER ACTIVITIES PROHIBITED  
PARKING IN DESIGNATED AREA ONLY  
STAY ON MRAP PROPERTY; NO TRESPASSING  
NO TRAPPING  
NO LITTERING INCLUDING SPENT SHELLS  
NO TARGET SHOOTING, CAMPING, OR ALCOHOL  
NO FIREWORKS, BIKING, HORSEBACK RIDING  
DO NOT OPEN GATES & AVOID DAMAGING FENCES  
NO EQUIPMENT OR GEAR MAY BE LEFT OVERNIGHT

### Legend

- Additional Parking
- Parking and Registration
- MRAP Boundary

**SPECIAL REGULATIONS APPLY. GO TO: [HTTPS://MDC.MO.GOV/MRAP](https://mdc.mo.gov/mrap)**