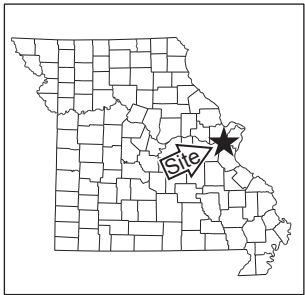
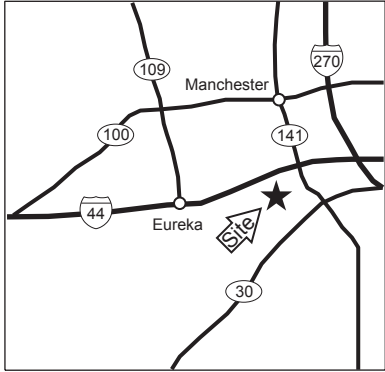


FOREST 44 CONSERVATION AREA

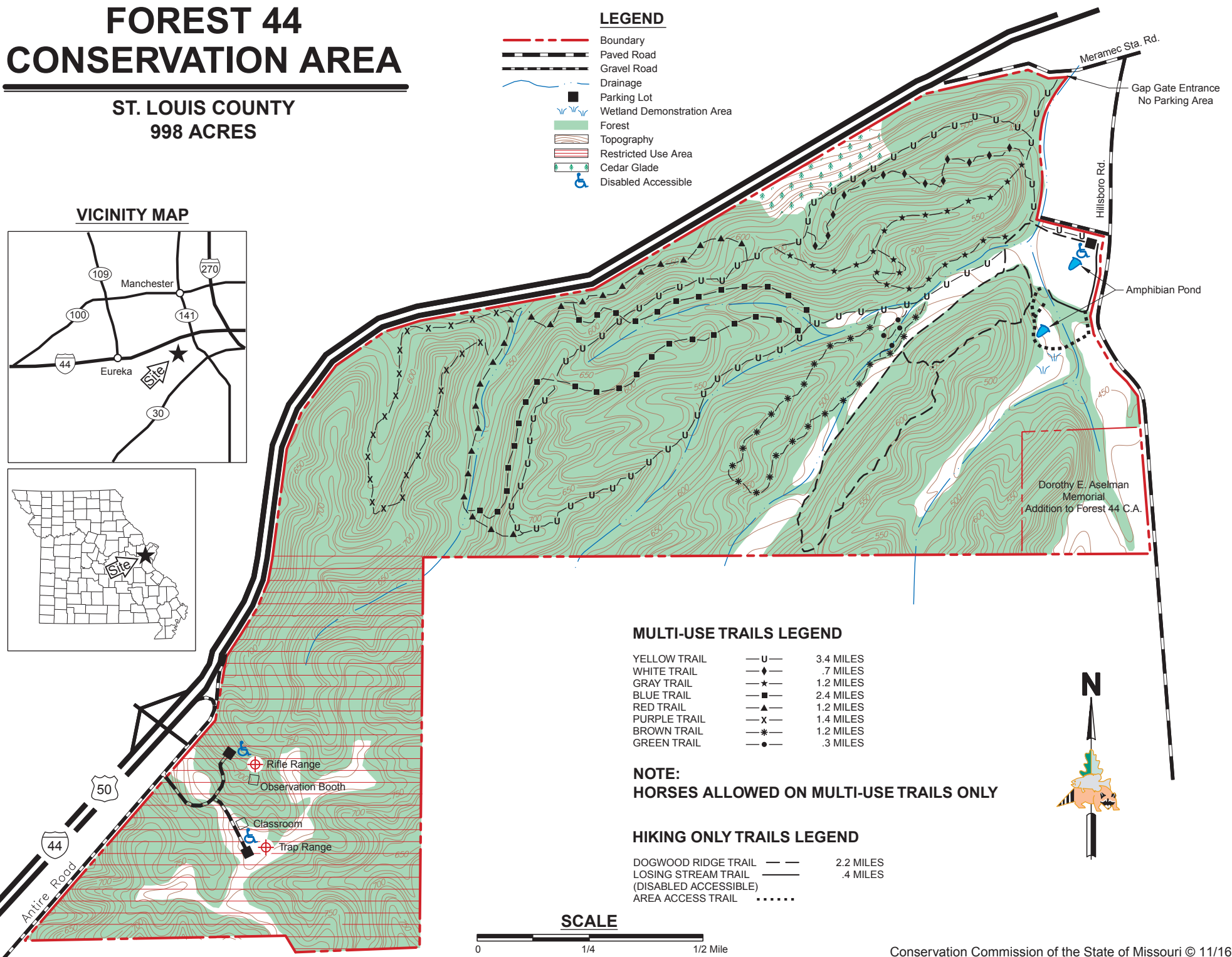
ST. LOUIS COUNTY
998 ACRES

VICINITY MAP



LEGEND

- Boundary
- Paved Road
- Gravel Road
- Drainage
- Parking Lot
- Wetland Demonstration Area
- Forest
- Topography
- Restricted Use Area
- Cedar Glade
- Disabled Accessible



Gap Gate Entrance
No Parking Area

Hillisboro Rd.

Meramec Sta. Rd.

Amphibian Pond

Dorothy E. Aselman
Memorial
Addition to Forest 44 C.A.

MULTI-USE TRAILS LEGEND

- | | | |
|--------------|--|-----------|
| YELLOW TRAIL | | 3.4 MILES |
| WHITE TRAIL | | .7 MILES |
| GRAY TRAIL | | 1.2 MILES |
| BLUE TRAIL | | 2.4 MILES |
| RED TRAIL | | 1.2 MILES |
| PURPLE TRAIL | | 1.4 MILES |
| BROWN TRAIL | | 1.2 MILES |
| GREEN TRAIL | | .3 MILES |

NOTE:
HORSES ALLOWED ON MULTI-USE TRAILS ONLY

HIKING ONLY TRAILS LEGEND

- | | | |
|--|--|-----------|
| DOGWOOD RIDGE TRAIL | | 2.2 MILES |
| LOSING STREAM TRAIL
(DISABLED ACCESSIBLE) | | .4 MILES |
| AREA ACCESS TRAIL | | |



SCALE

