

Missouri Outdoor Recreational Access Program (MRAP)

Area Map

Area Name: Charlette Sawyer Nature Area

County: Platte **Size:** 20 acres

Township: 51N, **Range:** 34W, **Sections:** 8

Public Access Type: Wildlife Viewing

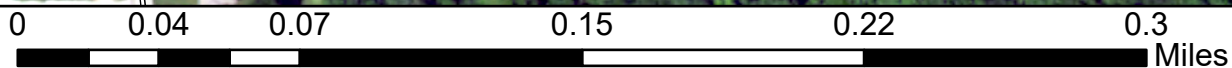
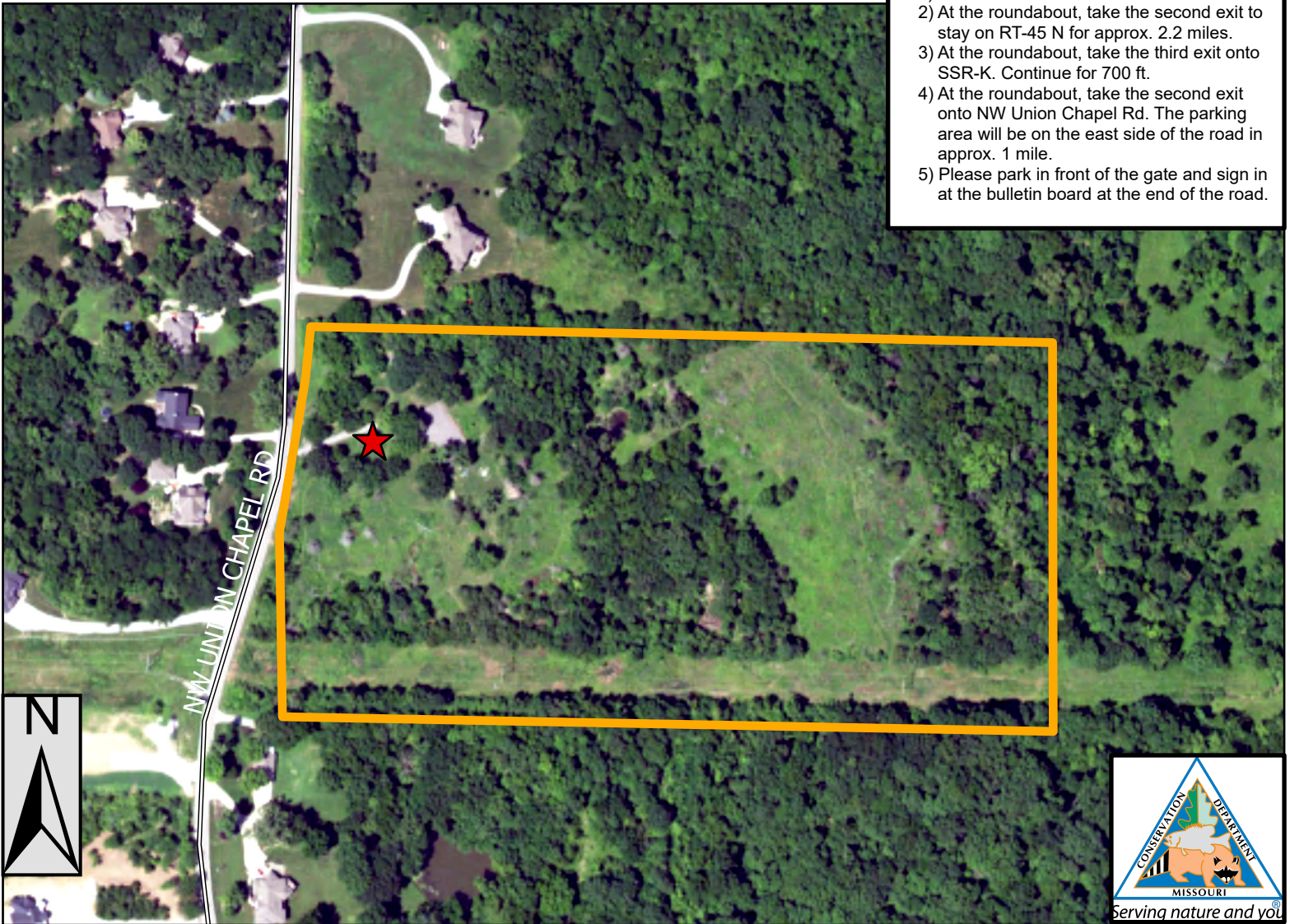
Area open 1 hr before sunrise to 1 hr after sunset

Platte County



Directions From Parkville:

- 1) Head west on RT-45 N.
- 2) At the roundabout, take the second exit to stay on RT-45 N for approx. 2.2 miles.
- 3) At the roundabout, take the third exit onto SSR-K. Continue for 700 ft.
- 4) At the roundabout, take the second exit onto NW Union Chapel Rd. The parking area will be on the east side of the road in approx. 1 mile.
- 5) Please park in front of the gate and sign in at the bulletin board at the end of the road.



PLEASE RESPECT PRIVATE PROPERTY
WALK-IN WILDLIFE VIEWING ONLY
NO HUNTING OR FISHING
PARKING IN DESIGNATED AREA ONLY
STAY ON MRAP PROPERTY; NO TRESPASSING
NO TRAPPING
NO LITTERING INCLUDING SPENT SHELLS
NO TARGET SHOOTING, CAMPING, OR ALCOHOL
NO FIREWORKS, BIKING, HORSEBACK RIDING
DO NOT OPEN GATES & AVOID DAMAGING FENCES
NO EQUIPMENT OR GEAR MAY BE LEFT OVERNIGHT

Legend

- Parking and Registration
- MRAP Boundary

SPECIAL REGULATIONS APPLY. GO TO: [HTTPS://MDC.MO.GOV/MRAP](https://mdc.mo.gov/mrap)