

LOCATION

The Moreau River basin, a sub basin of the Missouri River, lies in the central Missouri counties of Cole, Miller, Moniteau and Morgan (Figure 10). The river is formed by the confluence of North Moreau and South Moreau creeks approximately 4 miles north of Brazito in Cole County. North Moreau Creek originates near Fortuna in Moniteau County and flows to the east. South Moreau Creek originates near Eldon in Miller County and flows to the northeast. The Moreau River, draining 584 square miles of land, then empties into the Missouri River near Jefferson City in Cole County.

Hereafter, the term “basin” will refer to the entire Moreau River basin.

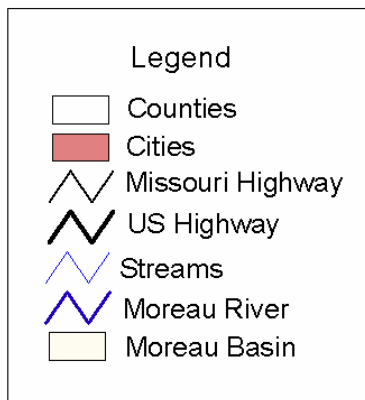
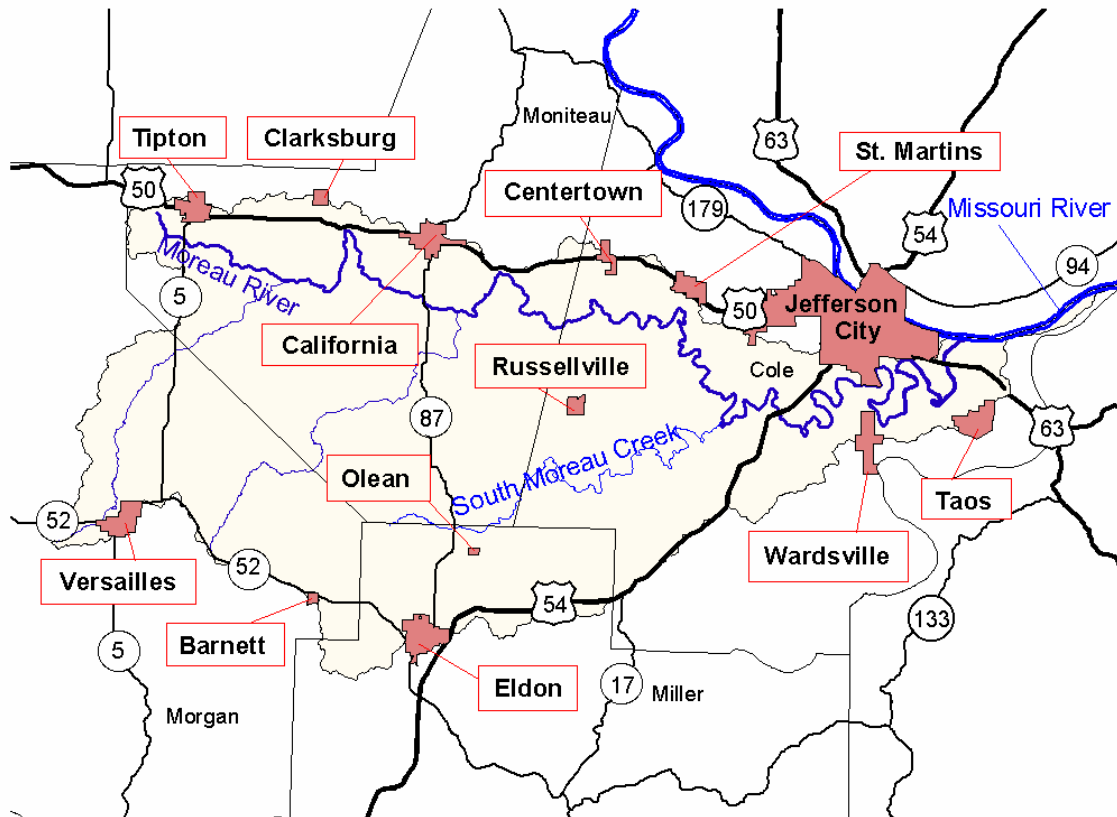


Figure 10. General location of the Moreau River Watershed, in Missouri.