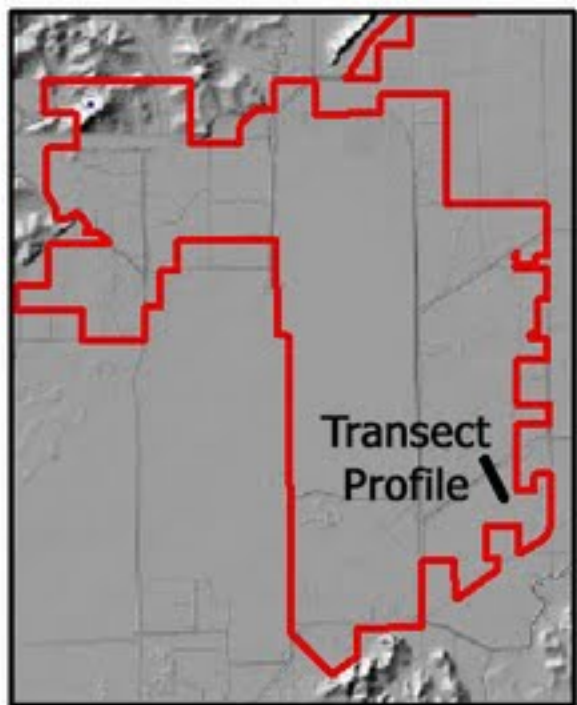


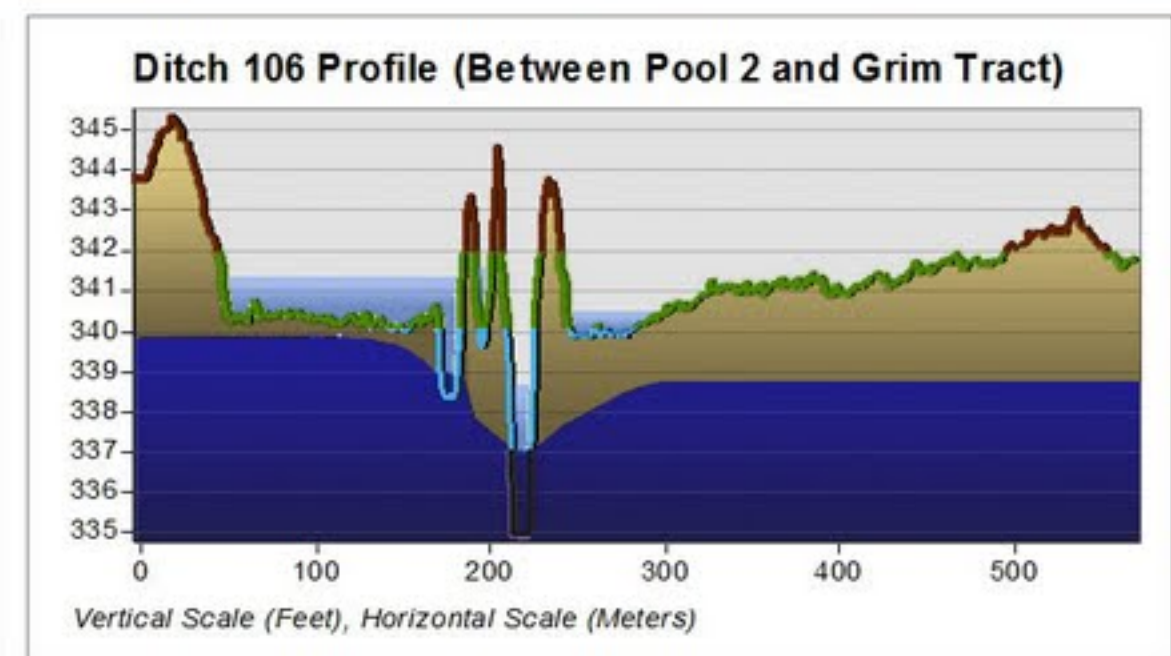
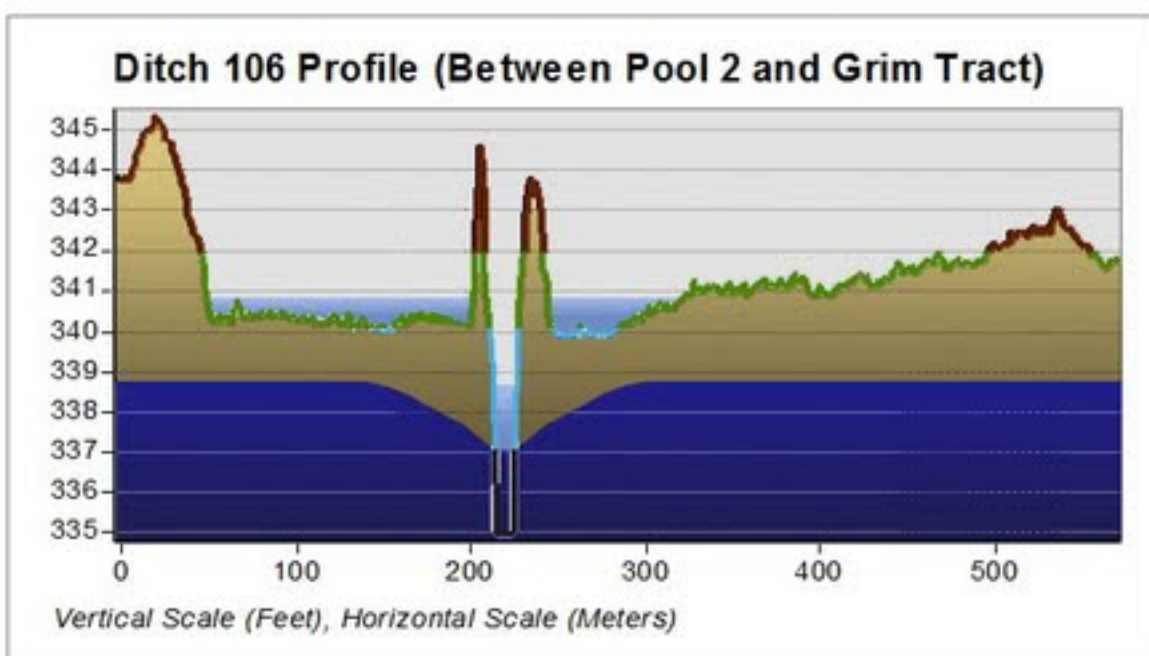
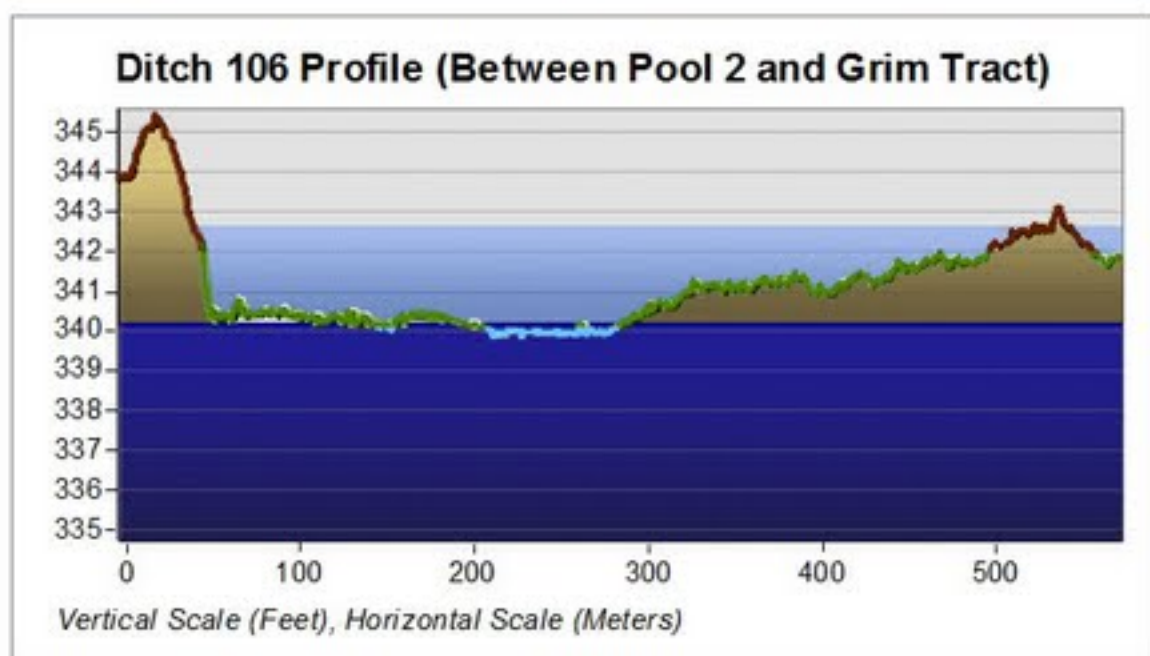
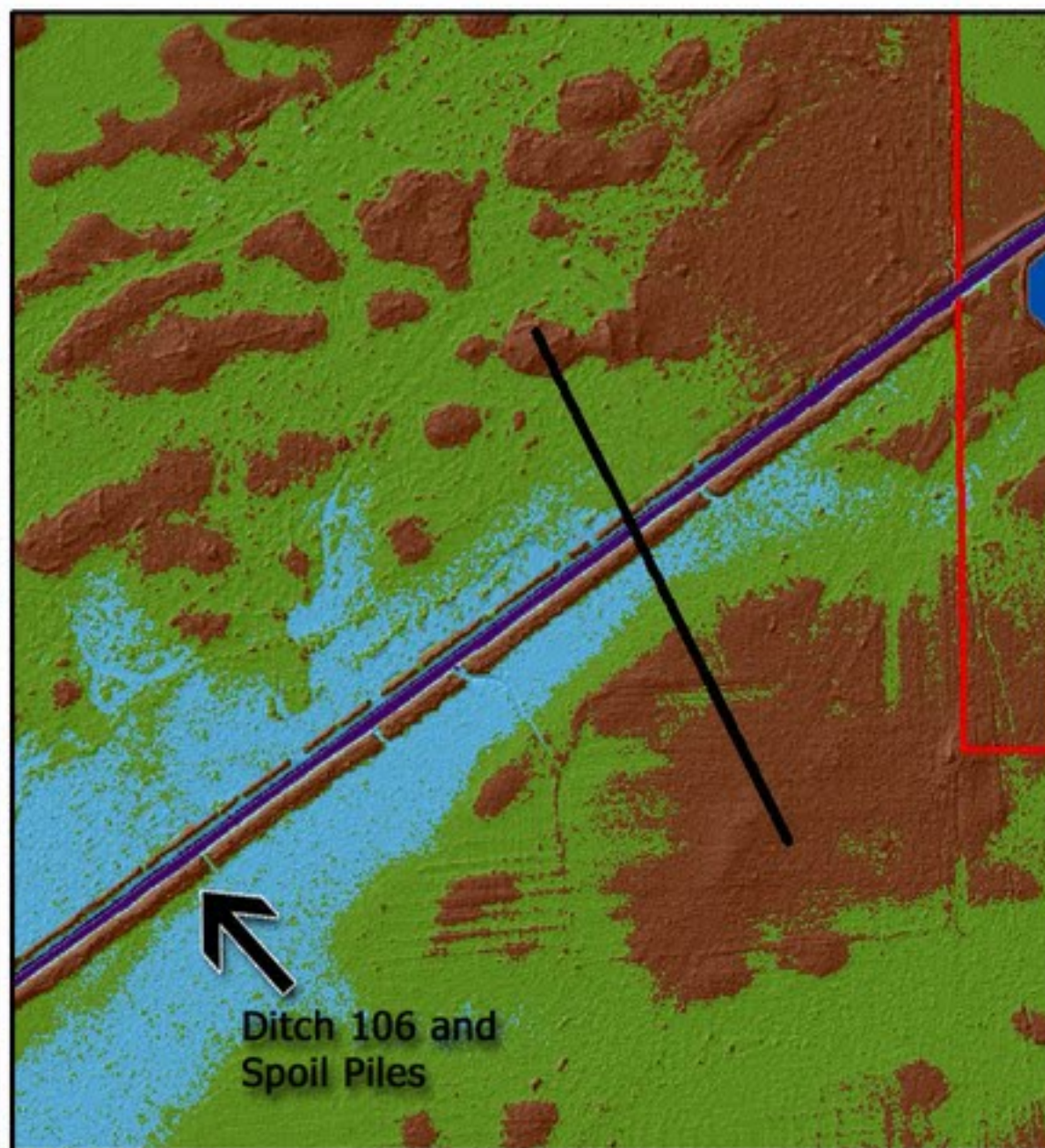
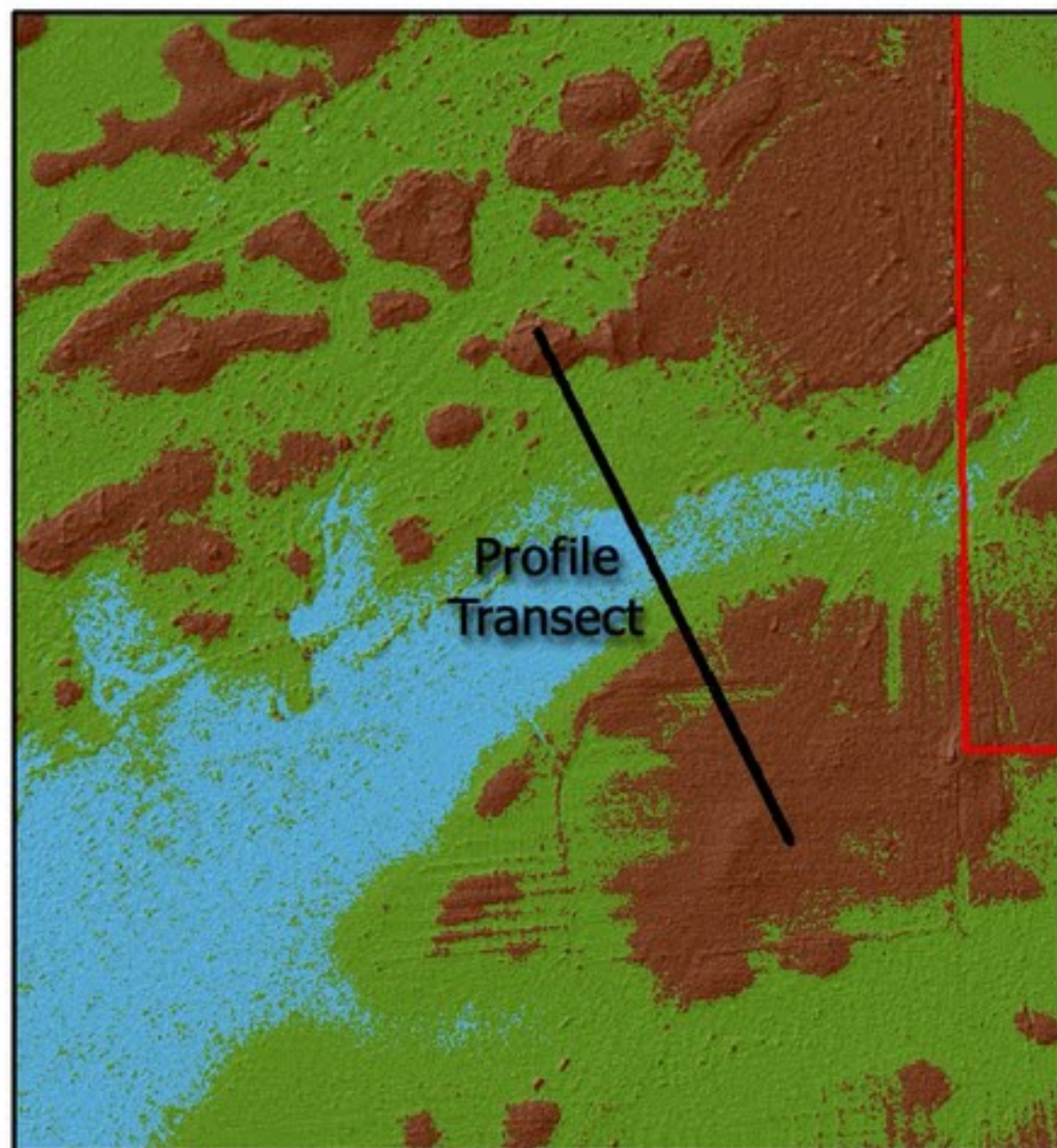
Topography Prior to 1913: No Ditches

Topography Prior to 1950: LRDD Ditches

Topography After 1950: LRDD Ditches along with MDC Roads and Boat-lanes



Drainage Ditch Profile Map



Without Modifications:

- Lowest landscape position remained wet
- Poorly drained, water table close to surface
- Precipitation would collect at low elevations and spread out to higher elevations

With Ditch and Spoil Piles:

- Ditch cuts across lowest elevation,
- Water table was lowered, which also had lateral effects drying surrounding area
- Precipitation was diverted by the ditch or blocked by the spoil pile

With Ditch, Roads, Borrow, Spoil Piles, and Boat-lanes:

- Ditch cuts across lowest elevation,
- Water table is lowered by ditch, which also has lateral effects drying surrounding area
- Water held in pool or borrows partially raises the immediate water table
- Precipitation is diverted by the ditch or blocked by the spoil pile and the road